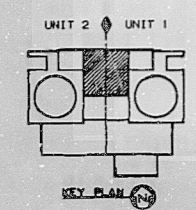
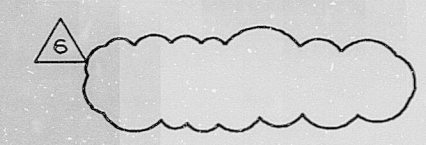
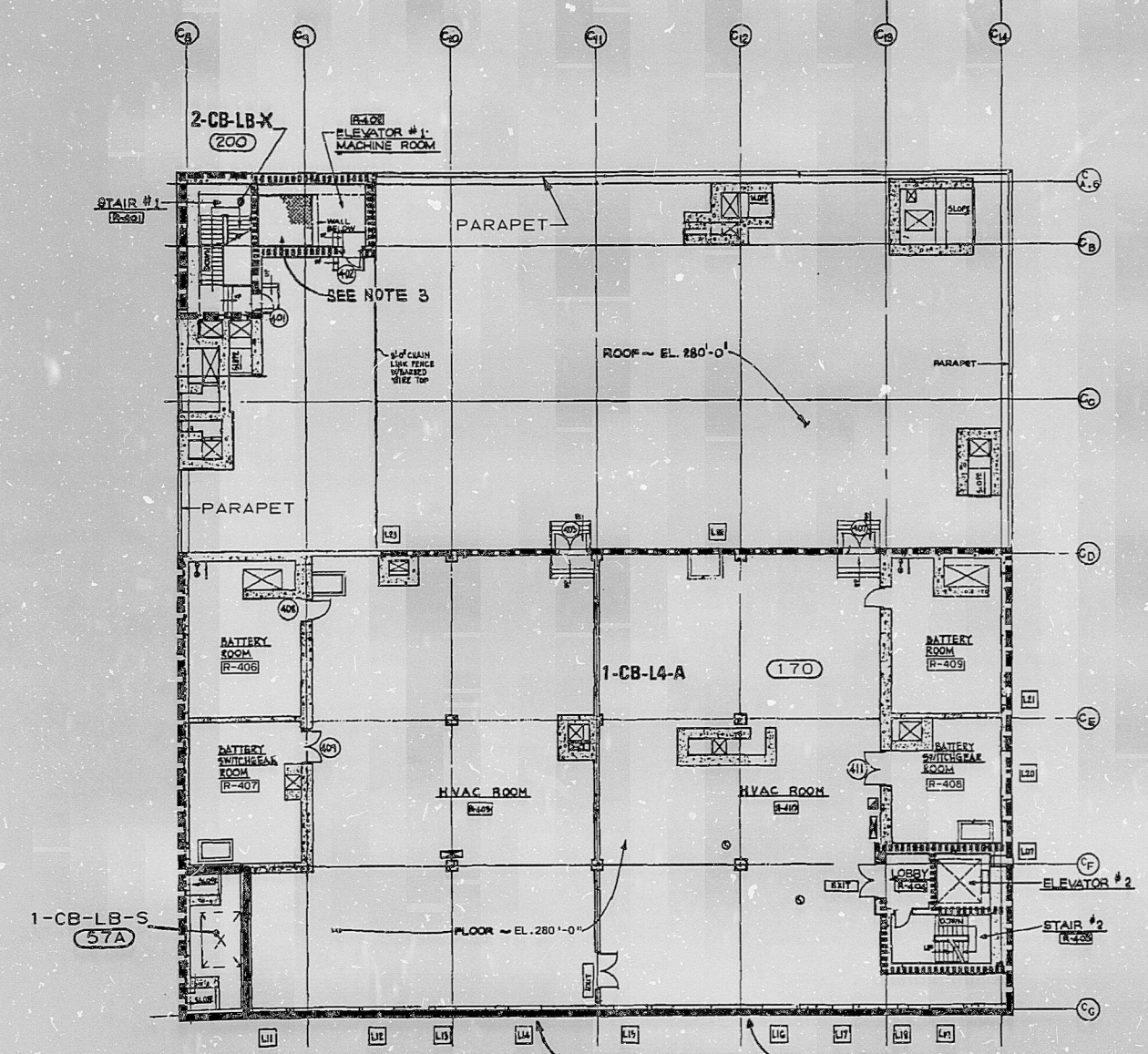


PARTIAL PLAN EL. 300'-0"
STAIR #2 ELEVATOR #2
MACHINE ROOM



- NOTES:
1. THE BACKGROUND USED ON THIS DRAWING IS PROVIDED FOR ORIENTATION PURPOSES ONLY.
 2. WALL AT EL. 280'-0" TO 288'-0" IS A 3HR RATED FIRE AREA BOUNDARY.
ABOVE EL. 288'-0" UNRATED
 3. FLOOR OF ROOM R-402 IS A 2HR RATED BOUNDARY BARRIER.
 4. DELETED



LEGEND

	3 HR RATED FIRE AREA BOUNDARY
	UNRATED FIRE AREA BOUNDARY
	3 HR RATED BOUNDARY
	2 HR RATED BOUNDARY
	PRE-ACTION SPRINKLER SYSTEM
	HALON SYSTEM
	FIRE HOSE CABINET
	FIRE HOSE REEL
	PORTABLE EXTINGUISHER (DRY CHEMICAL)
	EXIT SIGN LOCATION
	FIRE ALARM PULL BOX
	KNOCK OUT PANEL
	FIRE ZONE BOUNDARY
	FIRE ZONE DESIGNATOR

APERTURE
CARD

ELECTRICAL CABLE LOCATION CROSS REFERENCE

FIRE ZONE	UNIT 1 E4 CODE	UNIT 2 E4 CODE
170	KS	-
57A	K7	-
200	-	NX

△						
△	INCORP. PER ABN-32058	7-29-97	CD	MWD	EOG	
△	ISSUED FOR CONSTRUCTION	SEE MICROFILM FOR SIGNATURES				
NO.	REVISIONS	DATE	DR	CHK	APPV	DTL

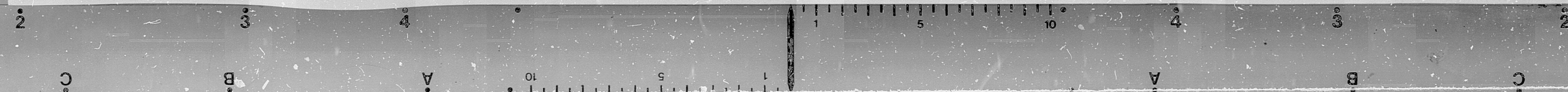
SOUTHERN COMPANY SERVICES, INC.
BIRMINGHAM, ALABAMA

GEORGIA POWER COMPANY
ALVIN W. VOGTLE NUCLEAR PLANT

FIRE AREAS
CONTROL BUILDING
FLOOR PLAN EL. 280'-0"
LEVEL 4

SCALE: NONE	DRAWING NO.	REV.
JOB NO. 10604	AX4DJ8029	6

THIS DOCUMENT CONTAINS PROPRIETARY, CONFIDENTIAL, AND/OR TRADE SECRET INFORMATION OF THE SUBSIDIARIES OF THE SOUTHERN COMPANY OR OF THIRD PARTIES. IT IS INTENDED FOR USE ONLY BY EMPLOYEES OF, OR AUTHORIZED CONTRACTORS OF, THE SUBSIDIARIES OF THE SOUTHERN COMPANY. UNAUTHORIZED POSSESSION, USE, DISTRIBUTION, COPYING, DISSEMINATION, OR DISCLOSURE OF ANY PORTION HEREOF IS PROHIBITED.



PDR RIDS

9910210093

9910210093

