

- NOTES:
1. FOR WELD PREPARATION SEE 13682555.
  2. WELD AND INSPECT IN ACCORDANCE WITH ASME BOILER AND PRESSURE VESSEL CODE SECTION III CLASS B.
  3. CUSTOMER TO LOCATE ITEM 7.
  4. BOXES MAY BE LOCATED IN ANY OF FOUR POSITIONS IF DESIRED.
  5. SEE INSTALLATION MANUAL FOR METHOD OF CALCULATING ELECTRICAL CAPACITY.
  6. APPROX. WEIGHT 500 LBS (LESS JCT BOXES)

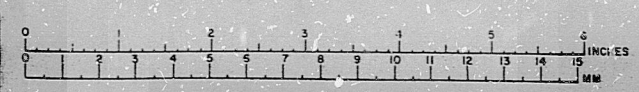
238X704NS GROUP 'D'	NOZZLE 'C'	NOZZLE LENGTH
1	X100A	7' - 10"
1	X100H	7' - 10"
2	X100S	8' - 3"
2	X102	8' - 3"

RECEIVED  
FILMED  
N.P.P.D., D.C.C.  
S/N

REVISIONS	PRINTS TO
1. 117C3349 10/10/70 E. Hargrave 4-10-70	A2 C
TITLE HAS LOW VOLTAGE POWER DRK	3
	2
	3

117C3349	117C3349	117C3349	117C3349
117C3349	117C3349	117C3349	117C3349
117C3349	117C3349	117C3349	117C3349
117C3349	117C3349	117C3349	117C3349

FEB. 28, 1977 N.P.P.D.



APERTURE CARD



9907190098

PDR RUS

9907190098

