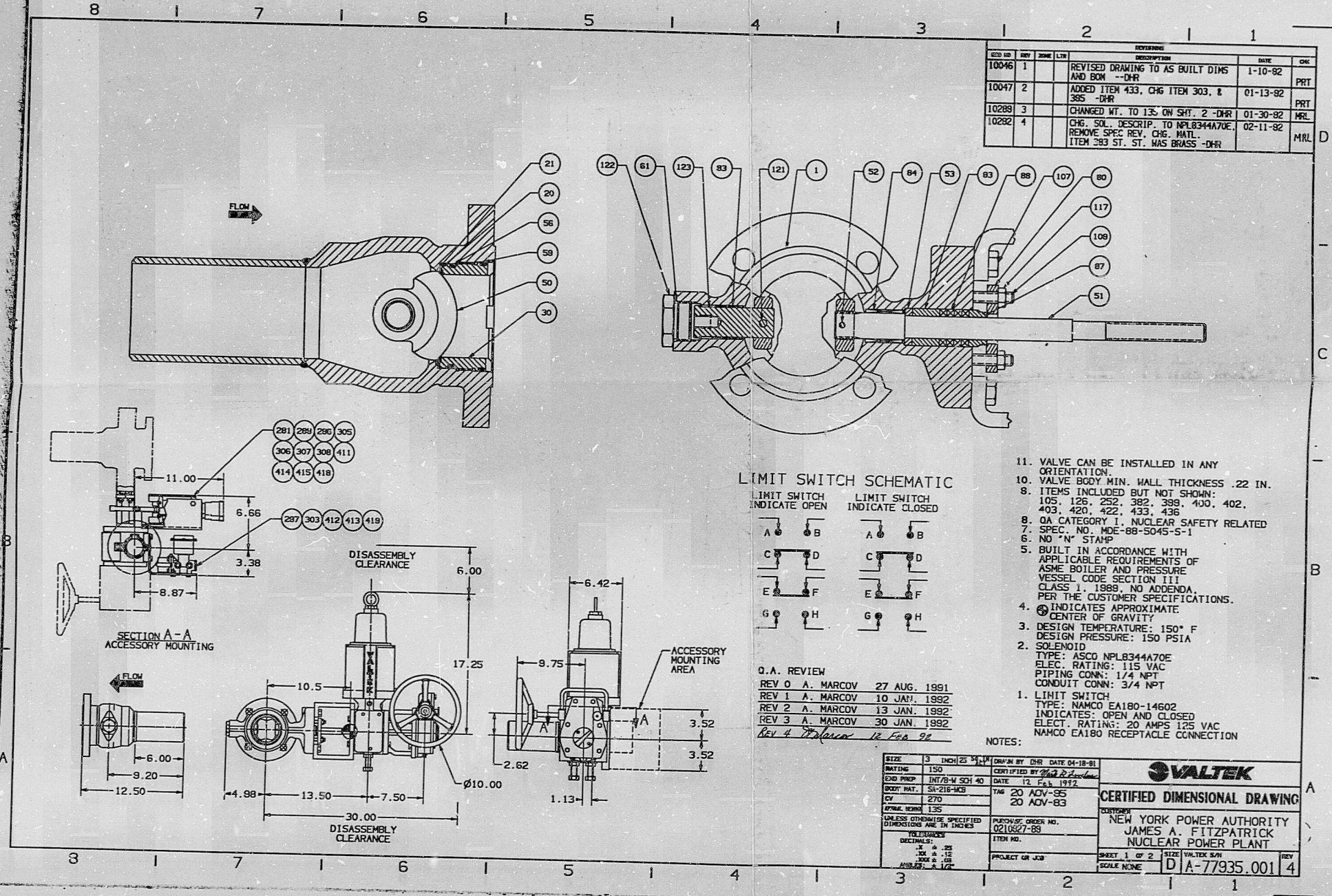


9902100196

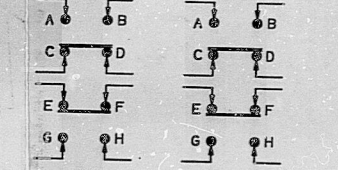


REV	NO	DATE	DESCRIPTION	BY	CHK
10046	1		REVISED DRAWING TO AS BUILT DIMS AND BOM -DHR		PRT
10047	2		ADDED ITEM 433, CHG ITEM 303, & 385 -DHR		PRT
10289	3		CHANGED MT. TO 135 ON SH1. 2 -DHR		MRL
10282	4		CHG. SOL. DESCRIP. TO NPLB344A70E. REMOVE SPEC REV. CHG. MATL. ITEM 283 ST. ST. WAS BRASS -DHR		MRL

APERTURE CARD

UNCONTROLLED DOCUMENT
 Copy Data
 Caution-Extended use of this document copy may result in its inaccuracy due to subsequent design changes and document updates.

LIMIT SWITCH SCHEMATIC



Q.A. REVIEW
 REV 0 A. MARCOV 27 AUG. 1991
 REV 1 A. MARCOV 10 JAN. 1992
 REV 2 A. MARCOV 13 JAN. 1992
 REV 3 A. MARCOV 30 JAN. 1992
 Rev 4 J. Mar... 12 Feb 92

- VALVE CAN BE INSTALLED IN ANY ORIENTATION.
- VALVE BODY MIN. WALL THICKNESS .22 IN.
- ITEMS INCLUDED BUT NOT SHOWN: 105, 126, 252, 382, 399, 400, 402, 403, 420, 422, 433, 436
- QA CATEGORY 1, NUCLEAR SAFETY RELATED
- SPEC. NO. WDE-88-5045-5-1
- NO "N" STAMP
- BUILT IN ACCORDANCE WITH APPLICABLE REQUIREMENTS OF ASME BOILER AND PRESSURE VESSEL CODE SECTION III CLASS 1, 1989, NO ADDENDA, PER THE CUSTOMER SPECIFICATIONS.
- ⊙ INDICATES APPROXIMATE CENTER OF GRAVITY
- DESIGN TEMPERATURE: 150° F
 DESIGN PRESSURE: 150 PSIA
- SOLENOID
 TYPE: ASCO NPLB344A70E
 ELEC. RATING: 115 VAC
 PIPING CONN: 1/4 NPT
 CONDUIT CONN: 3/4 NPT
- LIMIT SWITCH
 TYPE: NAMCO EA180-14602
 INDICATES: OPEN AND CLOSED
 ELEC. RATINGS: 20 AMPS 125 VAC
 NAMCO EA180 RECEPTACLE CONNECTION

VALTEK
CERTIFIED DIMENSIONAL DRAWING
 NEW YORK POWER AUTHORITY
 JAMES A. FITZPATRICK
 NUCLEAR POWER PLANT

DATE: 12 FEB 1992
 DRAWN BY: G. J. Z...
 CHECKED BY: G. J. Z...
 DATE: 12 FEB 1992
 TAP: 20 ADV-35
 20 ADV-83

PROJECT OR JOB: VALTEK SW
 SHEET: 1 OF 2
 SCALE: NONE
 FILE NO.: D A-77935.001 4

REV	DATE	DESCRIPTION	BY	CHK	APP
A		ORIGINAL ISSUE-AS-BUILT AND SUPERSEDES DWG NO. 765-387			
		DESCRIPTION			

REVISION OR ISSUE BY NYPA

James A. Fitzpatrick
 NUCLEAR POWER PLANT

TITLE: 3" ADV-CARBON STEEL BALL VALVE-FLANGED
 4" HAWK END-150# (VBF-20ADV-83) 195/2050V-
 COMPONENT I.D. NO. 63 5 583
 VENDOR: VALTEK
 VENDOR DWG. NO. A-77935.001 SH.1
 FILE NO. 7.65-387

9902100196

9902100196

EDR RID

9902100196

