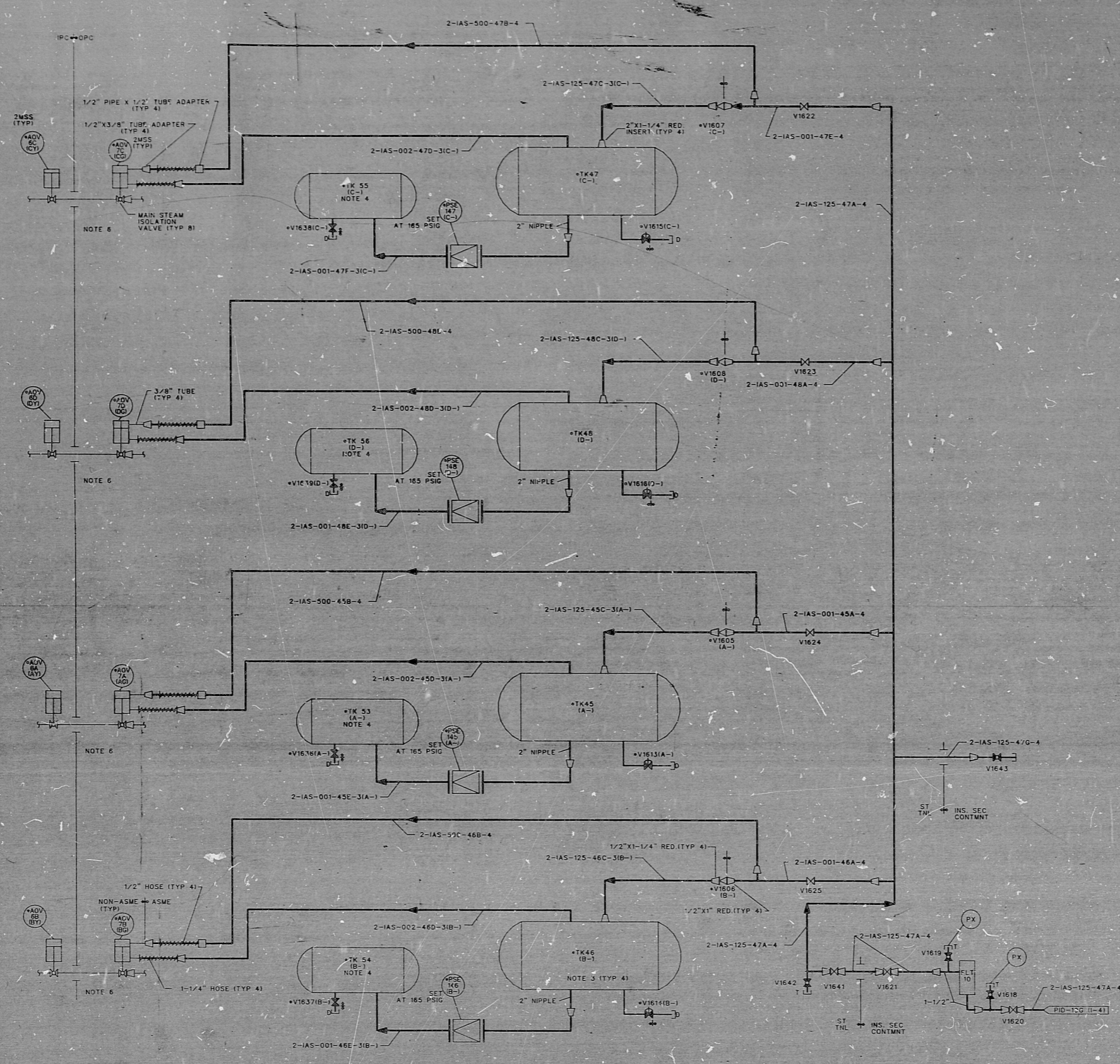


1277-PID-19A-1

MARK NUMBER	VALVE DESCRIPTION	SIZE	NO. OF
V1605, V1606, V1607, V1608	VCS015-G-3	1-1/2"	4
V1613, V1614, V1615, V1616	VSS080-C-3	3/4"	4
V1618, V1619, V1642	VSS060-C-4	3/4"	4
V1620, V1621, V1622, V1623, V1624, V1625, V1626	VSS060-D-4	1"	7
V1636, V1637, V1638, V1639	VCS080-D-3	3/4"	4



- NOTES:
1. ALL INSTRUMENT AND EQUIPMENT NUMBERS TO BE PREFIXED WITH "2-IAS" EXCEPT WHERE A DIFFERENT PREFIX IS SHOWN. AN ASTERISK (*) WILL REPLACE THE DASH (-) IN THE PREFIX FOR EQUIPMENT OR INSTRUMENTS WHICH ARE PART OF NUCLEAR FEATURES SYSTEM.
 2. ALL PIPING IS CLASS 153 UNLESS OTHERWISE NOTED.
 3. MSIV ACCUMULATORS *TK 45 THRU 49 ARE 1'-0" DIA. X 2'-7" LONG 35 GAL. CAPACITY.
 4. SIASATK13 THRU 56 ARE 1'-0" DIA. X 1'-3" LG. 0.87 CU. FT. CAPACITY.
 5. ALL VENTS, DRAINS AND TEST CONNECTIONS ARE 3/4" UNLESS OTHERWISE NOTED.
 6. SEE DETAIL 'A' ON PID-19L.

DOCUMENT USER CONSULT DCS TO OBTAIN LATEST APPLICABLE DOCUMENT INFORMATION.

RECEIVED
2.0 NO. 1277
JUN 23 '87

NUCLEAR SAFETY RELATED
QA CAT I, II

PIPING & INSTRUMENTATION DIAGRAM
INSTRUMENT & SERVICE AIR
NINE MILE POINT NUCLEAR STATION-UNIT 2
NIAGARA MOHAWK POWER CORPORATION
SLOWE & WEBSTER ENGINEERING CORPORATION
CHERRY HILL

PI APERTURE CARD

NO.	DATE	DESCRIPTION	BY	CHKD.
1		ORIGINAL ISSUE - INCORPORATES ECRN NO. IAS-098, 103, 829 AND NO. PA276RAX2051		
2				
3				
4				
5				

PDR RIDS

8709170523

