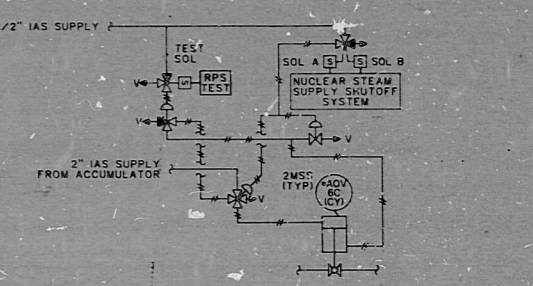
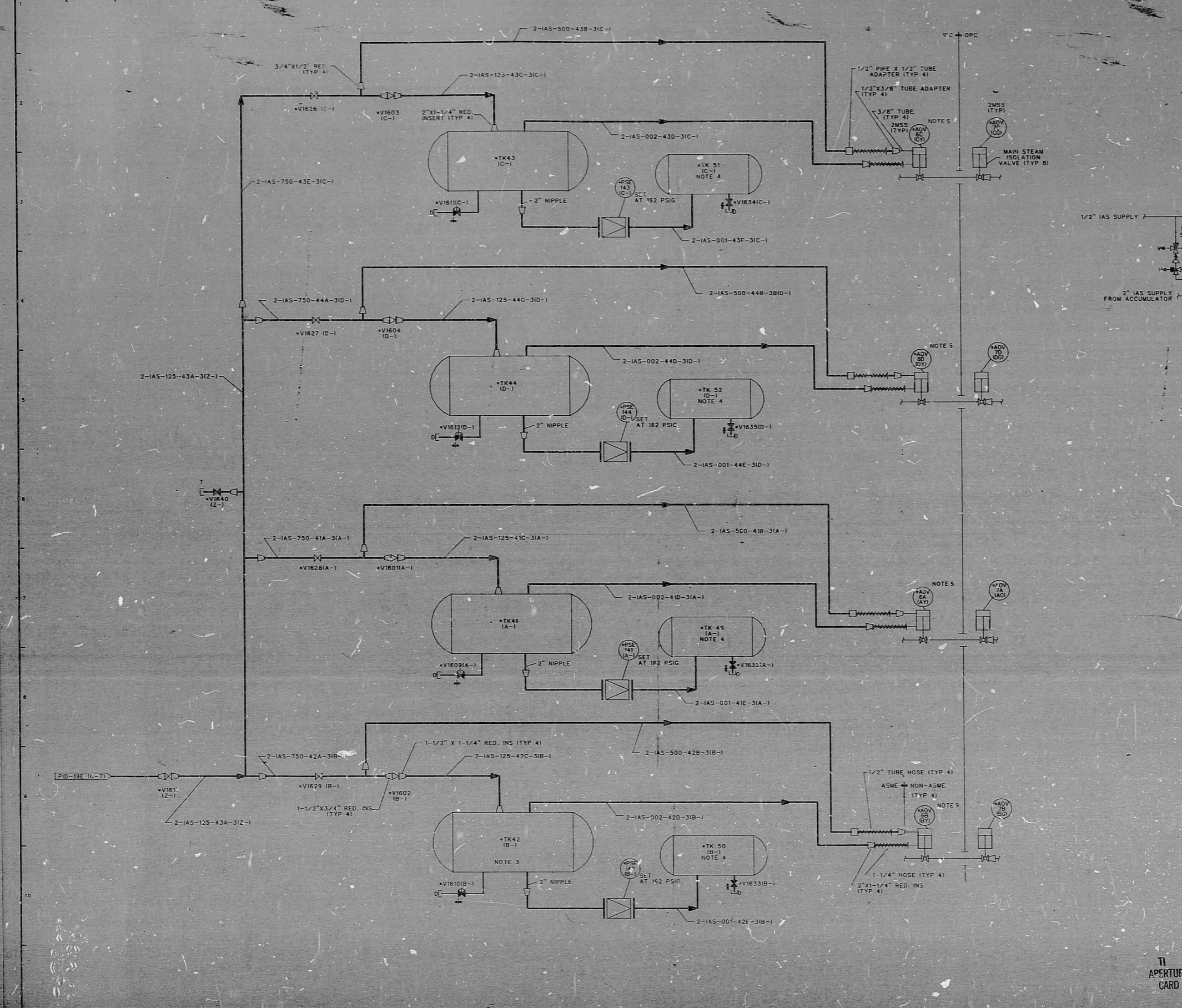


12177-PD-19L-1

VALVE NUMBER	DESCRIPTION	SIZE	NO. OF VALVES
V1601, 1602, 1603, 1604	VCS015-G-3	1-1/2"	4
V1609, 1610, 1611, 1612	VSS060-C-3	3/4"	4
V1617	VCS090-G-3	1-1/2"	1
V1624, 1627, 1628, 1629, 1632, 1633, 1634, 1635, 1640	VGS080-D-3	3/4"	9



- NOTES
- INSTRUMENT AND EQUIPMENT NUMBERS TO BE PREFIXED WITH "IAS-" EXCEPT WHERE A DIFFERENT PREFIX IS SHOWN.
  - "K" PREFIX WILL REPLACE THE DASH (-) IN THE PREFIX FOR EQUIPMENT OR INSTRUMENTS WHICH ARE PART OF NUCLEAR SAFETY FEATURES SYSTEM.
  - ALL PIPING IS CLASS 302 UNLESS OTHERWISE NOTED.
  - MSIV ACCUMULATORS \*TK 41 THRU 44 ARE 1"-Ø DIA. X 2'-7" LG. 35 GAL. CAPACITY.
  - \*TK45 THRU 52 ARE 1'-Ø DIA. X 2'-8" LG. 1.74 CU.FT. CAPACITY.
  - DETAIL 'A' TYPICAL FOR 2MS5+ADV 6A,B,C,D AND 2MS5+ADV 7A,B,C,D.
  - ACTUATOR SHOWN WITH EITHER SOL #A AND/OR SOL #B ENERGIZED AND TEST SOL DE-ENERGIZED.
  - ALL VENTS, DRAIN AND TEST CONNECTIONS ARE 3/4" UNLESS OTHERWISE NOTED.

DOCUMENT USER CONSULT DCS TO OBTAIN LATEST APPLICABLE DOCUMENT INFORMATION.

RECEIVED  
JUN 23 1987

NUCLEAR SAFETY RELATED  
QA CAT I, II

T1  
APERTURE  
CARD

PIPING & INSTRUMENTATION DIAGRAM  
INSTRUMENT & SERVICE AIR  
NINE MILE POINT NUCLEAR STATION-UNIT 2  
NIAGARA MOHAWK POWER CORPORATION  
STONE & WEBSTER ENGINEERING CORPORATION  
CHRYSTAL BEACH, N.Y.

NO.	DATE	DESCRIPTION	BY	CHKD.	APP'D.
1		ORIGINAL ISSUE - INCORPORATES ECR NO. IAS-008, 103, 823 (REV. 02 FEBRUARY 1983)			
2					
3					
5					

12177-PD-19L-1

PDR RIDS

8709170520

