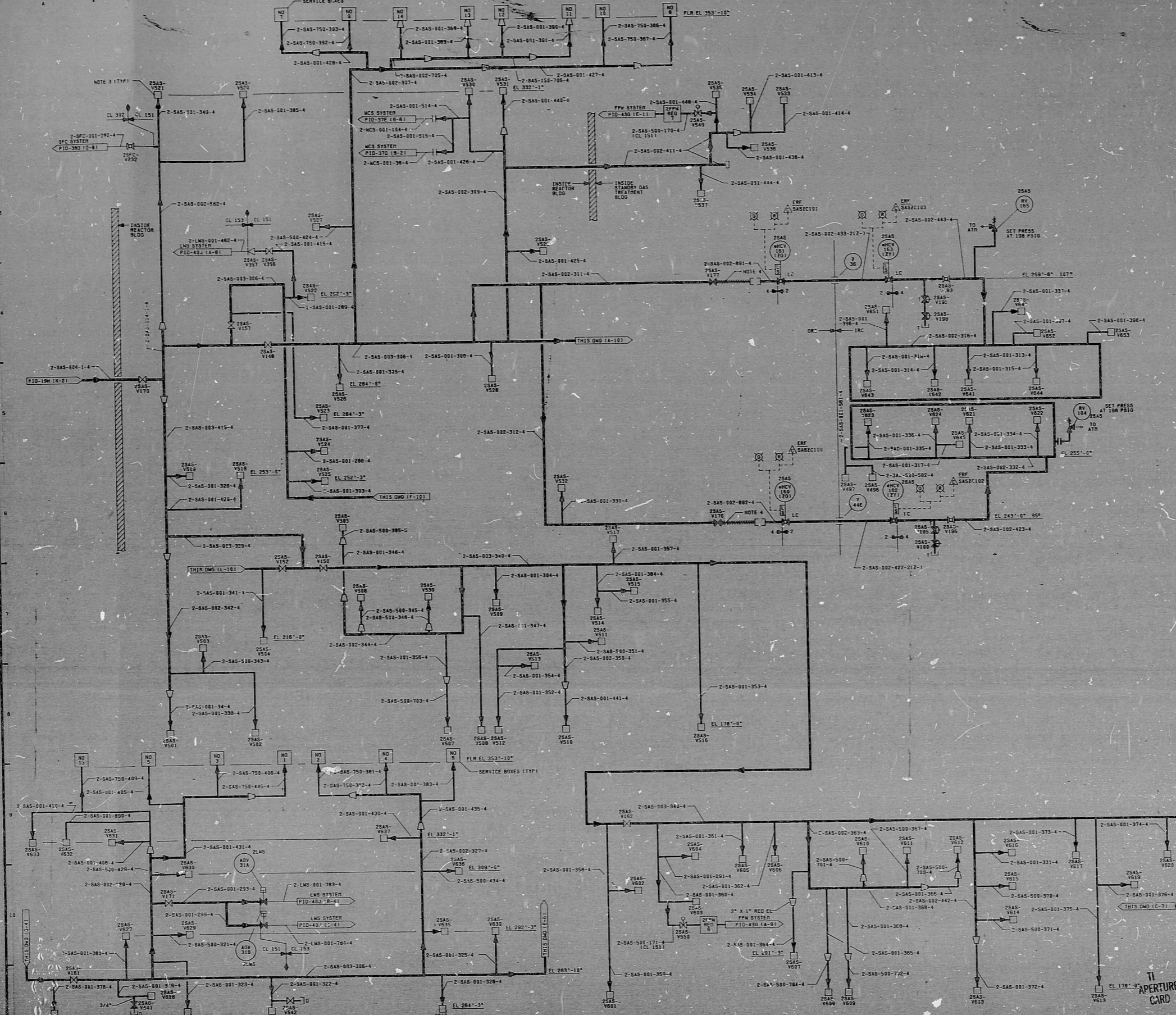
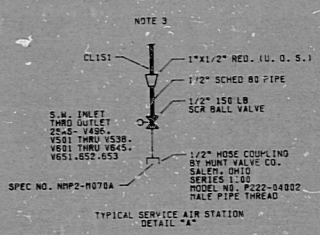


12177-PID-19J-6



SERVICE AIR SYSTEM VALVE TABLE "28AS"

VALVE NUMBER	DESCRIPTION	SIZE	LOC.
28AS-001-182-4	V0800-C-20	1"	0
28AS-001-183-4	V0800-C-4	3/4"	0
28AS-001-184-4	V0800-C-4	1"	0
28AS-001-185-4	V0800-C-4	1"	0
28AS-001-186-4	V0800-C-4	1"	0
28AS-001-187-4	V0800-C-4	1"	0
28AS-001-188-4	V0800-C-4	1"	0
28AS-001-189-4	V0800-C-4	1"	0
28AS-001-190-4	V0800-C-4	1"	0
28AS-001-191-4	V0800-C-4	1"	0
28AS-001-192-4	V0800-C-4	1"	0
28AS-001-193-4	V0800-C-4	1"	0
28AS-001-194-4	V0800-C-4	1"	0
28AS-001-195-4	V0800-C-4	1"	0
28AS-001-196-4	V0800-C-4	1"	0
28AS-001-197-4	V0800-C-4	1"	0
28AS-001-198-4	V0800-C-4	1"	0
28AS-001-199-4	V0800-C-4	1"	0
28AS-001-200-4	V0800-C-4	1"	0



- NOTES:
1. ALL INSTRUMENT & EQUIPMENT NUMBERS TO BE PREFIXED WITH "28AS" EXCEPT WHERE A DIFFERENT PREFIX IS SHOWN IN CONNECTION WITH THE INSTRUMENT OR EQUIPMENT WHICH ARE PART OF A DIFFERENT SYSTEM.
 2. ALL PIPING 2 1/2" AND LARGER IS CLASS 121. ALL PIPING 2" AND SMALLER IS CLASS 101.
 3. ALL PIPING TERMINALS ARE TERMINATED WITH TYPICAL SERVICE STATION (DETAIL "A") UNLESS OTHERWISE NOTED.
 4. FLEXIBLE HOSE SHALL HAVE NOT LESS THAN 1000 PSI QUICK DISCONNECT COUPLING.
 5. ALL LOCAL WELDS, WELDS, TEST AND PRESSURE CONNECTIONS SHALL BE 3/4" DIA. UNLESS OTHERWISE NOTED.
 6. * DENOTES DISJUNCTION METAL WELD.

DOCUMENT USER CONSULT DCIS TO OBTAIN LATEST APPLICABLE DOCUMENT INFORMATION.

NUCLEAR SAFETY RELATED RECEIVED
GA CAT 1:11
1987

PIPING & INSTRUMENTATION PROGRAM
INSTRUMENT & SERVICE AIR
NINE MILE POINT NUCLEAR STATION UNIT 2
NIAGARA MOHAWK POWER CORPORATION
STONK & WEBSTER
CHERRY HILL, N.J.

NO.	DESCRIPTION	DATE	BY	CHKD.	APP'D.	REVISION
1	ISSUED FOR CONSTRUCTION	10/15/87	R. K. GURAN			
2	INCORPORATES ECR NO. 28AS-001-010	10/15/87	R. K. GURAN			
3	INCORPORATES ECR NO. 28AS-001-011	10/15/87	R. K. GURAN			
4	INCORPORATES ECR NO. 28AS-001-012	10/15/87	R. K. GURAN			
5	INCORPORATES ECR NO. 28AS-001-013	10/15/87	R. K. GURAN			
6	INCORPORATES ECR NO. 28AS-001-014	10/15/87	R. K. GURAN			
7	INCORPORATES ECR NO. 28AS-001-015	10/15/87	R. K. GURAN			
8	INCORPORATES ECR NO. 28AS-001-016	10/15/87	R. K. GURAN			
9	INCORPORATES ECR NO. 28AS-001-017	10/15/87	R. K. GURAN			
10	INCORPORATES ECR NO. 28AS-001-018	10/15/87	R. K. GURAN			

THIS DRAWING CREATED ELECTRONICALLY

12177-PID-19J-6

PDR RIDS

8709170518

