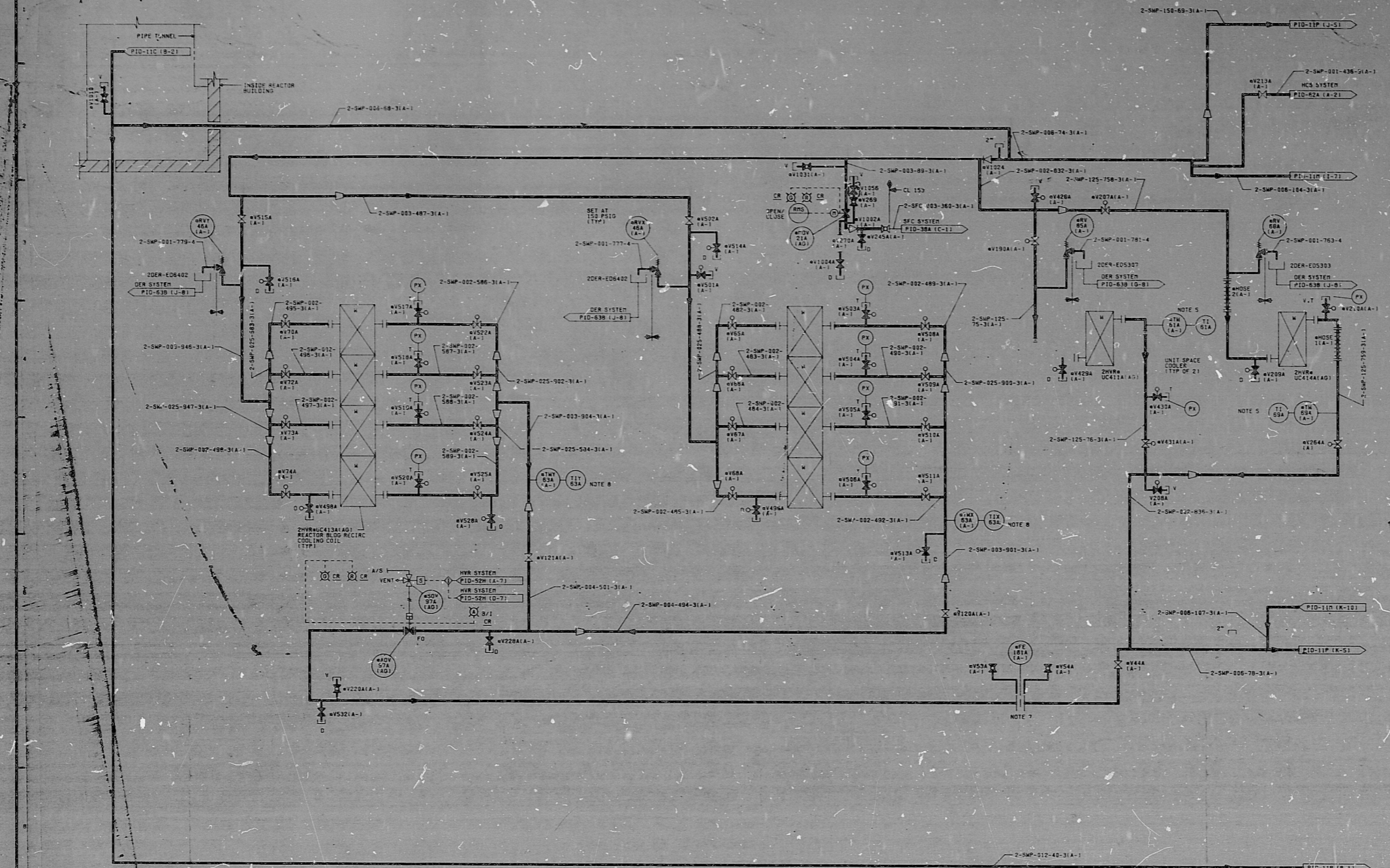


12177-PID-11E-6



MARK	DESCRIPTION	SIZE	NO. OF VALVES
V4515A	V4515-3-300	3"	1
V4516A	V4516-3-300	3"	1
V4517A	V4517-3-300	3"	1
V4518A	V4518-3-300	3"	1
V4519A	V4519-3-300	3"	1
V4520A	V4520-3-300	3"	1
V4521A	V4521-3-300	3"	1
V4522A	V4522-3-300	3"	1
V4523A	V4523-3-300	3"	1
V4524A	V4524-3-300	3"	1
V4525A	V4525-3-300	3"	1
V4526A	V4526-3-300	3"	1
V4527A	V4527-3-300	3"	1
V4528A	V4528-3-300	3"	1
V4529A	V4529-3-300	3"	1
V4530A	V4530-3-300	3"	1
V4531A	V4531-3-300	3"	1
V4532A	V4532-3-300	3"	1
V4533A	V4533-3-300	3"	1
V4534A	V4534-3-300	3"	1
V4535A	V4535-3-300	3"	1
V4536A	V4536-3-300	3"	1
V4537A	V4537-3-300	3"	1
V4538A	V4538-3-300	3"	1
V4539A	V4539-3-300	3"	1
V4540A	V4540-3-300	3"	1
V4541A	V4541-3-300	3"	1
V4542A	V4542-3-300	3"	1
V4543A	V4543-3-300	3"	1
V4544A	V4544-3-300	3"	1
V4545A	V4545-3-300	3"	1
V4546A	V4546-3-300	3"	1
V4547A	V4547-3-300	3"	1
V4548A	V4548-3-300	3"	1
V4549A	V4549-3-300	3"	1
V4550A	V4550-3-300	3"	1
V4551A	V4551-3-300	3"	1
V4552A	V4552-3-300	3"	1
V4553A	V4553-3-300	3"	1
V4554A	V4554-3-300	3"	1
V4555A	V4555-3-300	3"	1
V4556A	V4556-3-300	3"	1
V4557A	V4557-3-300	3"	1
V4558A	V4558-3-300	3"	1
V4559A	V4559-3-300	3"	1
V4560A	V4560-3-300	3"	1
V4561A	V4561-3-300	3"	1
V4562A	V4562-3-300	3"	1
V4563A	V4563-3-300	3"	1
V4564A	V4564-3-300	3"	1
V4565A	V4565-3-300	3"	1
V4566A	V4566-3-300	3"	1
V4567A	V4567-3-300	3"	1
V4568A	V4568-3-300	3"	1
V4569A	V4569-3-300	3"	1
V4570A	V4570-3-300	3"	1
V4571A	V4571-3-300	3"	1
V4572A	V4572-3-300	3"	1
V4573A	V4573-3-300	3"	1
V4574A	V4574-3-300	3"	1
V4575A	V4575-3-300	3"	1
V4576A	V4576-3-300	3"	1
V4577A	V4577-3-300	3"	1
V4578A	V4578-3-300	3"	1
V4579A	V4579-3-300	3"	1
V4580A	V4580-3-300	3"	1
V4581A	V4581-3-300	3"	1
V4582A	V4582-3-300	3"	1
V4583A	V4583-3-300	3"	1
V4584A	V4584-3-300	3"	1
V4585A	V4585-3-300	3"	1
V4586A	V4586-3-300	3"	1
V4587A	V4587-3-300	3"	1
V4588A	V4588-3-300	3"	1
V4589A	V4589-3-300	3"	1
V4590A	V4590-3-300	3"	1
V4591A	V4591-3-300	3"	1
V4592A	V4592-3-300	3"	1
V4593A	V4593-3-300	3"	1
V4594A	V4594-3-300	3"	1
V4595A	V4595-3-300	3"	1
V4596A	V4596-3-300	3"	1
V4597A	V4597-3-300	3"	1
V4598A	V4598-3-300	3"	1
V4599A	V4599-3-300	3"	1
V4600A	V4600-3-300	3"	1

DOCUMENT USER:
CONSULT DCIS TO
OBTAIN LATEST
APPLICABLE DOCUMENT
INFORMATION.

- NOTES:
1. ALL INSTRUMENT & EQUIPMENT NUMBERS TO BE PREFIXED WITH "2-SMP-" EXCEPT WHERE A DIFFERENT PREFIX IS SHOWN. INSTRUMENTS & EQUIPMENT PREFIXES ARE TO BE PREFIXED FOR EQUIPMENT OR INSTRUMENTS WHICH ARE PART OF NUCLEAR SAFETY FEEDBACK SYSTEMS.
 2. ALL PIPING SHALL BE CLAS 151 UNLESS OTHERWISE NOTED.
 3. ALL VENT DRAIN PRESSURE SAMPLE AND FLOW CONNECTIONS ARE 3/4" UNLESS OTHERWISE NOTED.
 4. ALL TEMPERATURE CONNECTIONS ARE 1/2".
 5. FOR DETAILS OF PIPING DESIGN FOR THROUGH CONNECTIONS, SEE DESIGN DIVISION STANDARD 12177-R-12-1.
 6. ALL HV'S ARE 3/4"x31" UNLESS OTHERWISE NOTED.
 7. COMPAREFEB IS PROVIDED WITH A FULL BORE ORIFICE PLATE FOR USE DURING NORMAL OPERATION. FOR TESTING PURPOSES A 1/2" ORIFICE PLATE WILL BE PROVIDED.
 8. FOR DETAILS OF PIPING DESIGN FOR THROUGH CONNECTIONS, SEE DESIGN DIVISION STANDARD 12177-R-12-1.

RECEIVED
I. O. 12147
APR 21 1987
STONE & WEBSTER
ENR. CORP.
CONTROL 47

NUCLEAR SAFETY RELATED
QA CAT I, II

TI
APERTURE
CARD

PIPING & INSTRUMENTATION DIAGRAM
SERVICE WATER
SYSTEM
NINE MILE POINT NUCLEAR STATION-UNIT 2
NIAGARA MOHAWK POWER CORPORATION

NO.	DESCRIPTION	CHG.	CORRECT	DATE	BY	REASON	NO.	DESCRIPTION	CHG.	CORRECT	DATE	BY	REASON
1	INCORPORATES ECN NO SWP-106						2	INCORPORATES ECN NO SWP-184-109					
3	AS TESTED ISSUE INCORPORATES ECN NO SWP-885 TO 101, 481 TO 487, 531 TO 534, 535 TO 538, 539 TO 542, 543 TO 546, 547 TO 550, 551 TO 554, 555 TO 558, 559 TO 562, 563 TO 566, 567 TO 570, 571 TO 574, 575 TO 578, 579 TO 582, 583 TO 586, 587 TO 590, 591 TO 594, 595 TO 598, 599 TO 602, 603 TO 606, 607 TO 610, 611 TO 614, 615 TO 618, 619 TO 622, 623 TO 626, 627 TO 630, 631 TO 634, 635 TO 638, 639 TO 642, 643 TO 646, 647 TO 650, 651 TO 654, 655 TO 658, 659 TO 662, 663 TO 666, 667 TO 670, 671 TO 674, 675 TO 678, 679 TO 682, 683 TO 686, 687 TO 690, 691 TO 694, 695 TO 698, 699 TO 702, 703 TO 706, 707 TO 710, 711 TO 714, 715 TO 718, 719 TO 722, 723 TO 726, 727 TO 730, 731 TO 734, 735 TO 738, 739 TO 742, 743 TO 746, 747 TO 750, 751 TO 754, 755 TO 758, 759 TO 762, 763 TO 766, 767 TO 770, 771 TO 774, 775 TO 778, 779 TO 782, 783 TO 786, 787 TO 790, 791 TO 794, 795 TO 798, 799 TO 802, 803 TO 806, 807 TO 810, 811 TO 814, 815 TO 818, 819 TO 822, 823 TO 826, 827 TO 830, 831 TO 834, 835 TO 838, 839 TO 842, 843 TO 846, 847 TO 850, 851 TO 854, 855 TO 858, 859 TO 862, 863 TO 866, 867 TO 870, 871 TO 874, 875 TO 878, 879 TO 882, 883 TO 886, 887 TO 890, 891 TO 894, 895 TO 898, 899 TO 902, 903 TO 906, 907 TO 910, 911 TO 914, 915 TO 918, 919 TO 922, 923 TO 926, 927 TO 930, 931 TO 934, 935 TO 938, 939 TO 942, 943 TO 946, 947 TO 950, 951 TO 954, 955 TO 958, 959 TO 962, 963 TO 966, 967 TO 970, 971 TO 974, 975 TO 978, 979 TO 982, 983 TO 986, 987 TO 990, 991 TO 994, 995 TO 998, 999 TO 1002												

PDR RIDS

8709170426

