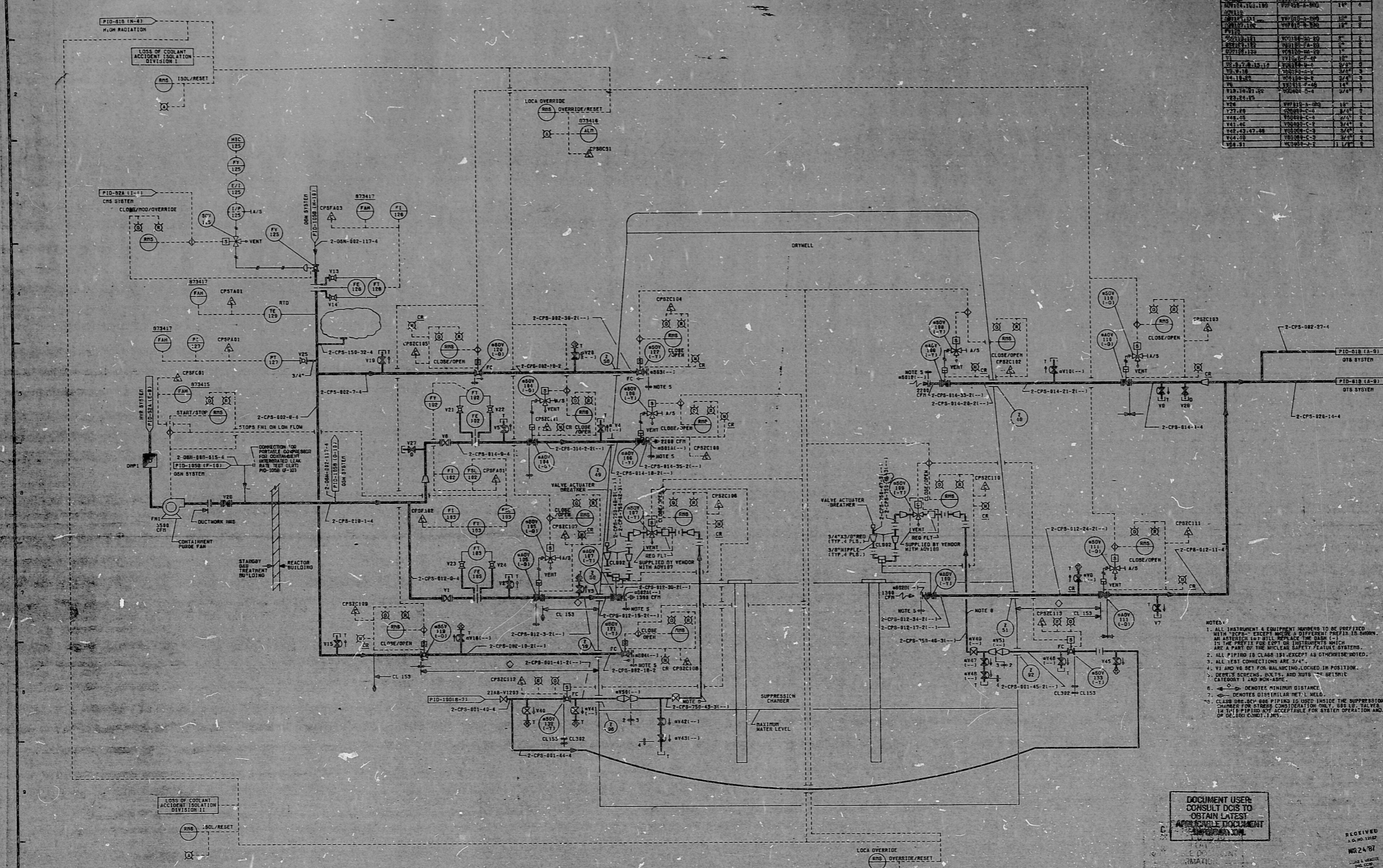


12177-PID-61A-4

PRIMARY CONTAINMENT PURGE VALVE TABLE

NO.	DESCRIPTION	QTY	REV.
1	12177-PID-61A-4	1	1
2	12177-PID-61A-4	1	2
3	12177-PID-61A-4	1	3
4	12177-PID-61A-4	1	4
5	12177-PID-61A-4	1	5
6	12177-PID-61A-4	1	6
7	12177-PID-61A-4	1	7
8	12177-PID-61A-4	1	8
9	12177-PID-61A-4	1	9
10	12177-PID-61A-4	1	10
11	12177-PID-61A-4	1	11
12	12177-PID-61A-4	1	12
13	12177-PID-61A-4	1	13
14	12177-PID-61A-4	1	14
15	12177-PID-61A-4	1	15
16	12177-PID-61A-4	1	16
17	12177-PID-61A-4	1	17
18	12177-PID-61A-4	1	18
19	12177-PID-61A-4	1	19
20	12177-PID-61A-4	1	20
21	12177-PID-61A-4	1	21
22	12177-PID-61A-4	1	22
23	12177-PID-61A-4	1	23
24	12177-PID-61A-4	1	24
25	12177-PID-61A-4	1	25
26	12177-PID-61A-4	1	26
27	12177-PID-61A-4	1	27
28	12177-PID-61A-4	1	28
29	12177-PID-61A-4	1	29
30	12177-PID-61A-4	1	30



- NOTES:
1. ALL INSTRUMENT & EQUIPMENT NUMBERS TO BE PREFIXED WITH "CPS" EXCEPT WHERE A DIFFERENT PREFIX IS SHOWN. AN APOSTROPHE (') WILL REPLACE THE DASH IN THE PREFIX FOR LOW OR HIGH PRESSURE DEVICES.
  2. ALL PIPING IS CLASS 150 EXCEPT AS OTHERWISE NOTED.
  3. ALL VALVE CONNECTIONS ARE 3/4".
  4. 'V' AND 'VE' SET FOR BALANCING LOCKED IN POSITION.
  5. DEBITS SPECIES, SIZING AND AUTO-BEING CATEGORIES 1 AND NON-ARE.
  6. 'D' DENOTES MINIMUM DISTANCE.
  7. 'W' DENOTES DISPERSED WELD.
  8. CLASS 150 LOW-BOB PIPING IS USED UNLESS THE SUPPRESSION CHAMBER FOR SYSTEM CONSIDERATION ONLY. SEE L.S. VALVES IN THIS PIPING ARE ACCEPTABLE FOR SYSTEM OPERATION AND, OF COURSE, COMPLY.

DOCUMENT USER  
CONSULT DCS TO  
OBTAIN LATEST  
APPLICABLE DOCUMENT  
VERSION ONLY

RECEIVED  
10/24/81  
W224/81  
MAGNETIC  
COMPARISON

NUCLEAR SAFETY RELATED  
QA CAT I-II

PIPING & INSTRUMENTATION DIAGRAM  
PRIMARY CONTAINMENT PURGE &  
STANDBY GAS TREATMENT  
MINE MILE POINT NUCLEAR STATION-227  
MAGNARA BROWNS POWER CORPORATION

APERTURE  
CARD

THIS DRAWING CREATED ELECTRONICALLY

13  
14  
15  
16  
17  
18  
19  
20  
21  
22  
23  
24  
25  
26  
27

**PDR RIDS**

8709170135

