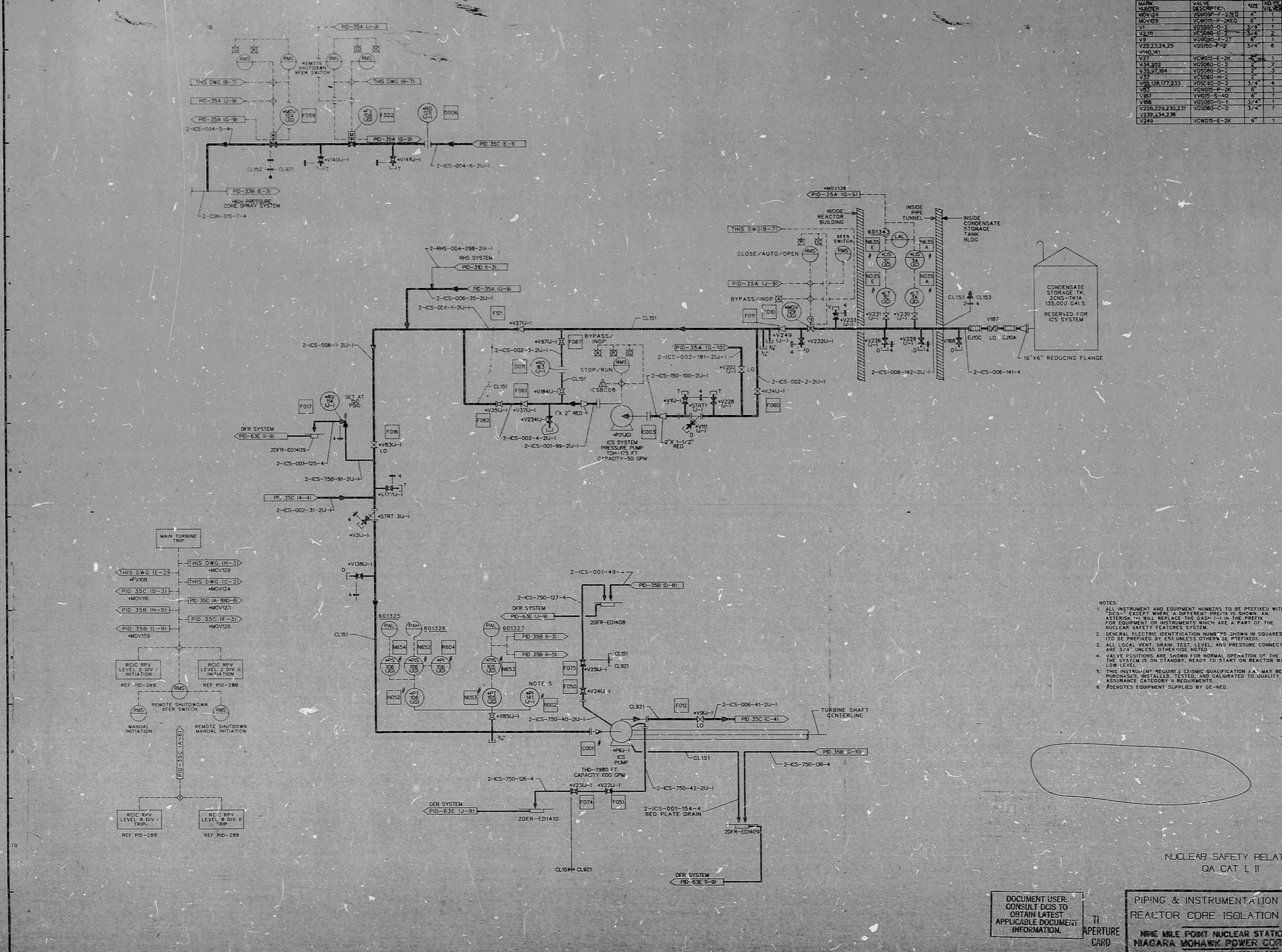


1217-PID-350-3



NAME	VALVE	DESCRIPTION	SIZE	NO.
MOV134	VC605-F-220		4"	1
MOV135	VC605-F-260		6"	1
V1	VC500-C-2		3/4"	2
V2 III	VC500-C-2		3/4"	2
V3	VC500-F-21		6"	1
V22,23,24,25	VC500-F-2		3/4"	6
V40(A)	VC605-E-2K		2"	1
V27	VC500-C-2		2"	2
V15,17,18	VC500-C-2		2"	3
V37	VC500-H-2		2"	1
V38,177,233	VC500-D-2		3/4"	4
V47	VC605-F-2K		6"	1
V187	VC605-S-40		6"	1
V188	VC500-D-2		3/4"	1
V228,229,230,231	VC500-C-2		3/4"	7
V232,234,236	VC500-C-2		3/4"	7
V249	VC605-E-2K		6"	1

- NOTES:
1. ALL INSTRUMENT AND EQUIPMENT NUMBERS TO BE PREFIXED WITH "2ICS" EXCEPT WHERE A DIFFERENT PREFIX IS SHOWN AN asterisk REPLACE THE DASH (-) IN THE PREFIX FOR EQUIPMENT OR INSTRUMENTS WHICH ARE A PART OF THE NUCLEAR SAFETY FEATURES SYSTEM.
 2. GENERAL ELECTRIC IDENTIFICATION NUMBERS SHOWN IN SQUARES TO BE PREFIXED BY "E" UNLESS OTHERWISE PREFIXED.
 3. ALL LOCAL VERT. DRAIN, TEST, LEVEL, AND PRESSURE CONNECTIONS ARE 3/4" UNLESS OTHERWISE NOTED.
 4. VALVE POSITIONS ARE SHOWN FOR NORMAL OPERATION OF THE PLANT. THE SYSTEM IS ON STANDBY, READY TO START ON REACTOR WATER LOW LEVEL.
 5. THIS INSTRUMENT REQUIRES CERTIFICATED QUALIFICATION (A) MAY BE PURCHASED, INSTALLED, TESTED, AND CALIBRATED TO QUALITY ASSURANCE CATEGORY II REQUIREMENTS.
 6. PREFIXES EQUIPMENT SUPPLIED BY GE-RED.

RECEIVED
 I.C. NO. 10187
 DEC 10 86
 STONE & WEBSTER
 100 COPY

NUCLEAR SAFETY RELATED
 QA CAT I, II

DOCUMENT USER
 CONSULT DCIS TO
 OBTAIN LATEST
 APPLICABLE DOCUMENT
 INFORMATION.

PIPING & INSTRUMENTATION DIAGRAM
 REACTOR CORE ISOLATION COOLING
 NIAGARA MOHAWK NUCLEAR STATION UNIT 2
 NIAGARA MOHAWK POWER CORPORATION
 STONE & WEBSTER ENGINEERING CORPORATION
 SENECA FALLS, NY

NO.	DESCRIPTION	DATE	BY	CHKD.	APP'D.	REVISION
1	ISSUED FOR CONSTRUCTION	10/1/86	J. J. ...	J. J. ...	J. J. ...	1
2	AS TESTED ISSUE	11/1/86	J. J. ...	J. J. ...	J. J. ...	2
3	INCORPORATES ECH NOTE	11/1/86	J. J. ...	J. J. ...	J. J. ...	3
4						4
5						5

PDR RIDS

8709170105

