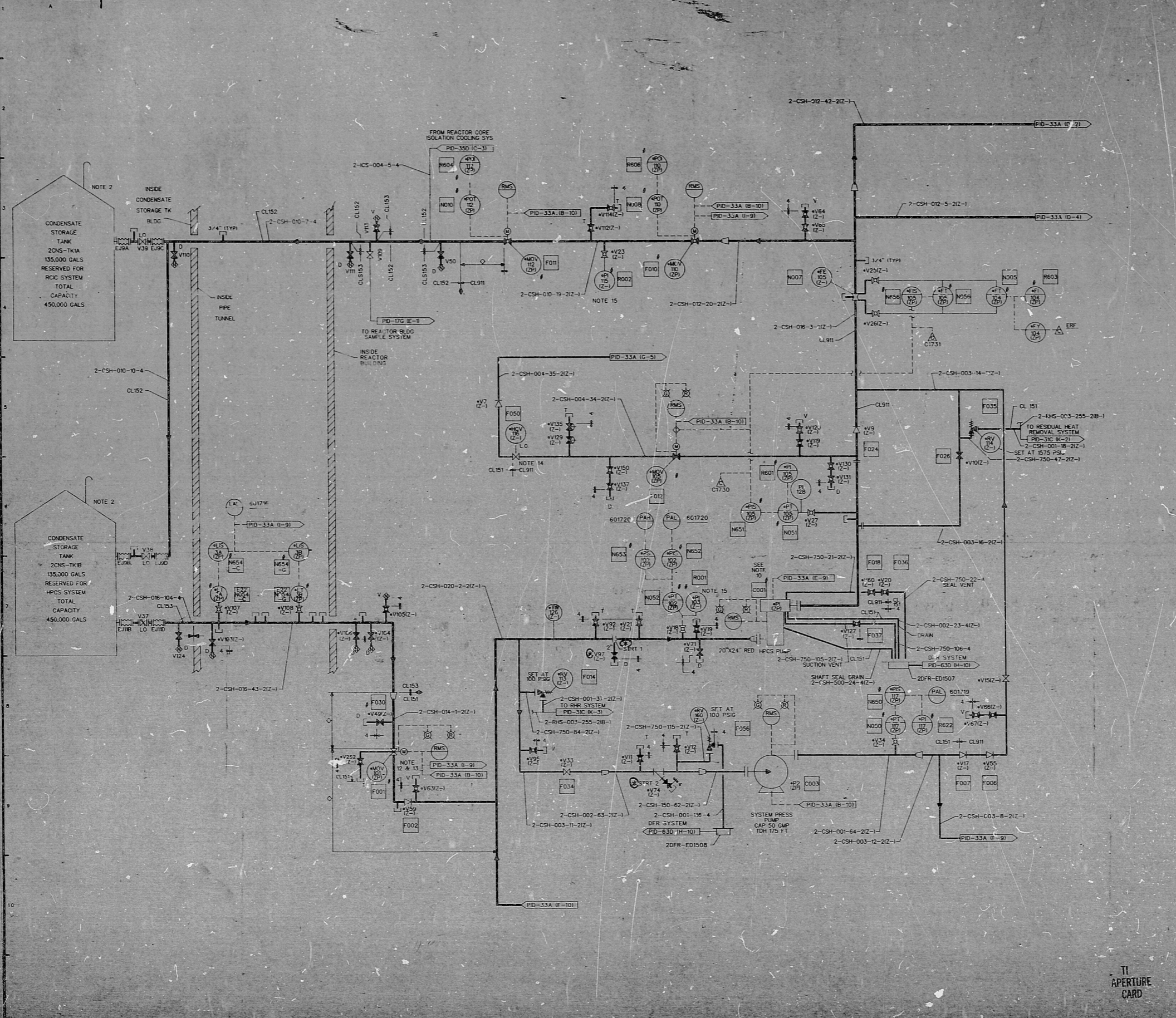


12177-PD-338-6



ITEM	DESCRIPTION	QTY	UNIT
V101	V101-0-1	1	1"
V102	V102-0-1	1	1"
V103	V103-0-1	1	1"
V104	V104-0-1	1	1"
V105	V105-0-1	1	1"
V106	V106-0-1	1	1"
V107	V107-0-1	1	1"
V108	V108-0-1	1	1"
V109	V109-0-1	1	1"
V110	V110-0-1	1	1"
V111	V111-0-1	1	1"
V112	V112-0-1	1	1"
V113	V113-0-1	1	1"
V114	V114-0-1	1	1"
V115	V115-0-1	1	1"
V116	V116-0-1	1	1"
V117	V117-0-1	1	1"
V118	V118-0-1	1	1"
V119	V119-0-1	1	1"
V120	V120-0-1	1	1"
V121	V121-0-1	1	1"
V122	V122-0-1	1	1"
V123	V123-0-1	1	1"
V124	V124-0-1	1	1"
V125	V125-0-1	1	1"
V126	V126-0-1	1	1"
V127	V127-0-1	1	1"
V128	V128-0-1	1	1"
V129	V129-0-1	1	1"
V130	V130-0-1	1	1"
V131	V131-0-1	1	1"
V132	V132-0-1	1	1"
V133	V133-0-1	1	1"
V134	V134-0-1	1	1"
V135	V135-0-1	1	1"
V136	V136-0-1	1	1"
V137	V137-0-1	1	1"
V138	V138-0-1	1	1"
V139	V139-0-1	1	1"
V140	V140-0-1	1	1"
V141	V141-0-1	1	1"
V142	V142-0-1	1	1"
V143	V143-0-1	1	1"
V144	V144-0-1	1	1"
V145	V145-0-1	1	1"
V146	V146-0-1	1	1"
V147	V147-0-1	1	1"
V148	V148-0-1	1	1"
V149	V149-0-1	1	1"
V150	V150-0-1	1	1"
V151	V151-0-1	1	1"
V152	V152-0-1	1	1"
V153	V153-0-1	1	1"
V154	V154-0-1	1	1"
V155	V155-0-1	1	1"
V156	V156-0-1	1	1"
V157	V157-0-1	1	1"
V158	V158-0-1	1	1"
V159	V159-0-1	1	1"
V160	V160-0-1	1	1"
V161	V161-0-1	1	1"
V162	V162-0-1	1	1"
V163	V163-0-1	1	1"
V164	V164-0-1	1	1"
V165	V165-0-1	1	1"
V166	V166-0-1	1	1"
V167	V167-0-1	1	1"
V168	V168-0-1	1	1"
V169	V169-0-1	1	1"
V170	V170-0-1	1	1"
V171	V171-0-1	1	1"
V172	V172-0-1	1	1"
V173	V173-0-1	1	1"
V174	V174-0-1	1	1"
V175	V175-0-1	1	1"
V176	V176-0-1	1	1"
V177	V177-0-1	1	1"
V178	V178-0-1	1	1"
V179	V179-0-1	1	1"
V180	V180-0-1	1	1"
V181	V181-0-1	1	1"
V182	V182-0-1	1	1"
V183	V183-0-1	1	1"
V184	V184-0-1	1	1"
V185	V185-0-1	1	1"
V186	V186-0-1	1	1"
V187	V187-0-1	1	1"
V188	V188-0-1	1	1"
V189	V189-0-1	1	1"
V190	V190-0-1	1	1"
V191	V191-0-1	1	1"
V192	V192-0-1	1	1"
V193	V193-0-1	1	1"
V194	V194-0-1	1	1"
V195	V195-0-1	1	1"
V196	V196-0-1	1	1"
V197	V197-0-1	1	1"
V198	V198-0-1	1	1"
V199	V199-0-1	1	1"
V200	V200-0-1	1	1"

- NOTES
1. ALL INSTRUMENT AND EQUIP NUMBERS TO BE PREFIXED BY "2CSH" EXCEPT WHERE A DIFFERENT PREFIX IS SHOWN AN ASTERISK (*) WILL REPLACE THE DASH (-) IN THE PREFIX FOR EQUIPMENT OR INSTRUMENTS WHICH ARE A PART OF NUCLEAR SAFETY FEATURES SYSTEM.
 2. SEE PD-4A FOR OTHER PIPING & INSTRUMENTATION ON CONDENSATE STORAGE TANK.
 3. LEVEL SWITCH IS ULTRASONIC TYPE FOR ANNUNCIATION ONLY.
 4. GE IDENTIFICATION NUMBERS ARE SHOWN IN SQUARES (TO BE PREFIXED BY E22 UNLESS OTHERWISE PREFIXED).
 5. ALL LOCAL VENTS, COPIES, TEST CONNECTIONS, COGN. FLOW TAPS SHALL BE 3/4".
 6. * INDICATES A DISSIMILAR WELD AT PIPE CLASS CHANGE.
 7. VALVE POSITIONS ARE SHOWN FOR NORMAL OPERATION OF THE PLANT. THE SYSTEM IS ON STANDBY, READY TO START ON FLUCATIONALS.
 8. ALL INSTRUMENT LINES HAVE DRYWELL TO BE 1/4" CL152 SCHED UNLESS OTHERWISE NOTED.
 9. LINES 1" AND SMALLER WHICH ARE PART OF THE REACTOR COOLANT PRESSURE BOUNDARY SHALL BE SAFTTY CLASS 2.
 10. FLOW PUMP CAPACITY AND TDH REFER TO HPCS PUMP PERFORMANCE CURVE VDF-0666-70-1.
 11. LEVEL CONNECTIONS ARE T UNLESS OTHERWISE NOTED.
 12. BONNET VENT CONNECTION ON VALVE 2CSH-001-116-4 HAS A 3/4" NIPPLE AND CAP PER CL153.
 13. VALVE 2CSH-001-116-4 HAS A WELDED PLUG AT THE 801.7MM DRAIN LOCATION.
 14. VALVE 2CSH-001-116-4 IS THROTTLED TO MAINTAIN FLOW OF 500 GPM. THIS INSTRUMENT REQUIRES SETTING QUALIFICATION AND MAY BE PURCHASED, INSTALLED, TESTED AND ACCEPTED TO QA CAT I REQUIREMENTS.
 15. # DENOTES EQUIPMENT SUPPLIED BY VED.
 16. * DENOTES MINIMUM DISTANCE REQUIRED FOR INSTALLATION.

DOCUMENT UNDER CONTROL
 CONTROLLED BY
 DATE 12/15/87
 APPROPRIATE TO UNIT INFORMATION

RECEIVED
 JUN 24 87
 SCALE 1/8" = 1'-0"
 CONSULT

NUCLEAR SAFETY RELATED
 QA CAT I, II

TI
 APERTURE
 CARD

PIPING & INSTRUMENTATION DIAGRAM
 HIGH PRESSURE CORE SPRAY
 SYSTEM
 NINE MILE POINT NUCLEAR STATION UNIT 2
 NIAGARA MOHAWK POWER CORPORATION
 STONE & BERBER ENGINEERING CORPORATION

NO.	DATE	BY	DESCRIPTION
1	12/15/87
2
3
4
5
6
7
8
9
10
11
12
13
14
15
16
17
18
19
20
21
22
23
24
25
26
27
28
29
30
31
32

PDR RIDS

8709170098

