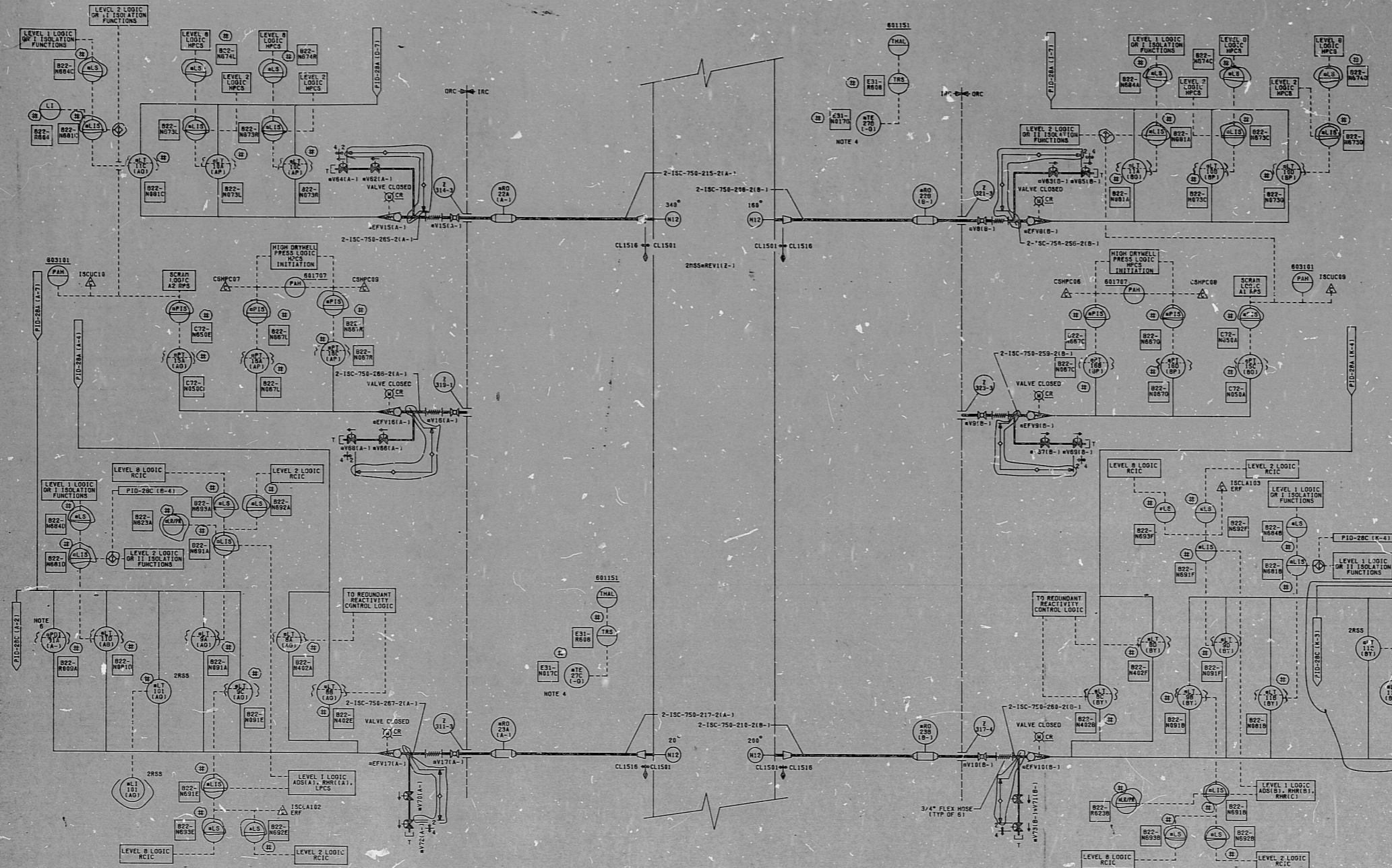


DATE	BY	DESCRIPTION	SCALE
10.18.15.18.17	YGB/150-M-2	5/2"	6
10.25.15.18.17	YGB/150-A-2	3/4"	12
11.17.15.18.17			



- NOTES:
1. ALL INSTRUMENT & EQUIPMENT NUMBERS TO BE PROVIDED WITH "215C" EXCEPT WHERE DIFFERENT IS SHOWN. ALL INSTRUMENTS SHALL BE CALIBRATED TO THE PRECISION FOR EQUIPMENT OR INSTRUMENTS WHICH ARE PART OF NUCLEAR SAFETY FEATURE SYSTEM.
  2. GENERAL ELECTRIC IDENTIFICATION NUMBERS ARE SHOWN IN SQUARES.
  3. ALL INSTRUMENT LINES INSIDE CONFINEMENT ARE CLASS 2. ALL INSTRUMENT LINES OUTSIDE CONFINEMENT ARE CLASS 2 UNLESS OTHERWISE NOTED.
  4. MONITORS DRIVEN BY AIR TEMPERATURE.
  5. PIPE NO. 1: NOMINAL PIPE SIZE AND SMALLER WHICH ARE PART OF THE REACTOR COOLANT PRESSURE BOUNDARY SHALL BE SAFETY CLASS 2 UNLESS OTHERWISE NOTED.
  6. THIS INSTRUMENT LOGIC HAS SPECIFIC QUALIFICATION AND MAY BE PERFORMED BY CERTIFIED PERSONNEL AND CALIBRATED TO QUALITY ASSURANCE CLASS 2 REQUIREMENTS.
  7. # INDICATES EQUIPMENT SUPPLIED BY G.E.
  8. 14-0-04 DENOTES MINIMUM DISTANCE FOR INSTALLATION.

DOCUMENT USER  
CONSULT DGS TO  
OBTAIN LATEST  
APPLICABLE DOCUMENT  
INFORMATION

NUCLEAR SAFETY RELATED  
QA CAT I

PIPING & INSTRUMENTATION DIAGRAM  
NUCLEAR BOILER AND  
PROCESS INSTRUMENTATION  
NINE MILE POINT NUCLEAR STATION-UNIT 2  
NIAGARA MOHAWK POWER CORPORATION  
GENERAL ENGINEERING CORPORATION  
CHEVY HILLS, N.J.

TI  
APERTURE  
CARD

NO.	DESCRIPTION	CHG.	DATE	BY	REVISION	DESCRIPTION	CHG.	DATE	BY	REVISION	DESCRIPTION
1	AS-TESTER ISSUE										
2	INCORPORATES DCR NO. 1										
3	INCORPORATES DCR NO. 2										
4	INCORPORATES DCR NO. 3										
5	INCORPORATES DCR NO. 4										

PDR RIDS

8709170011

