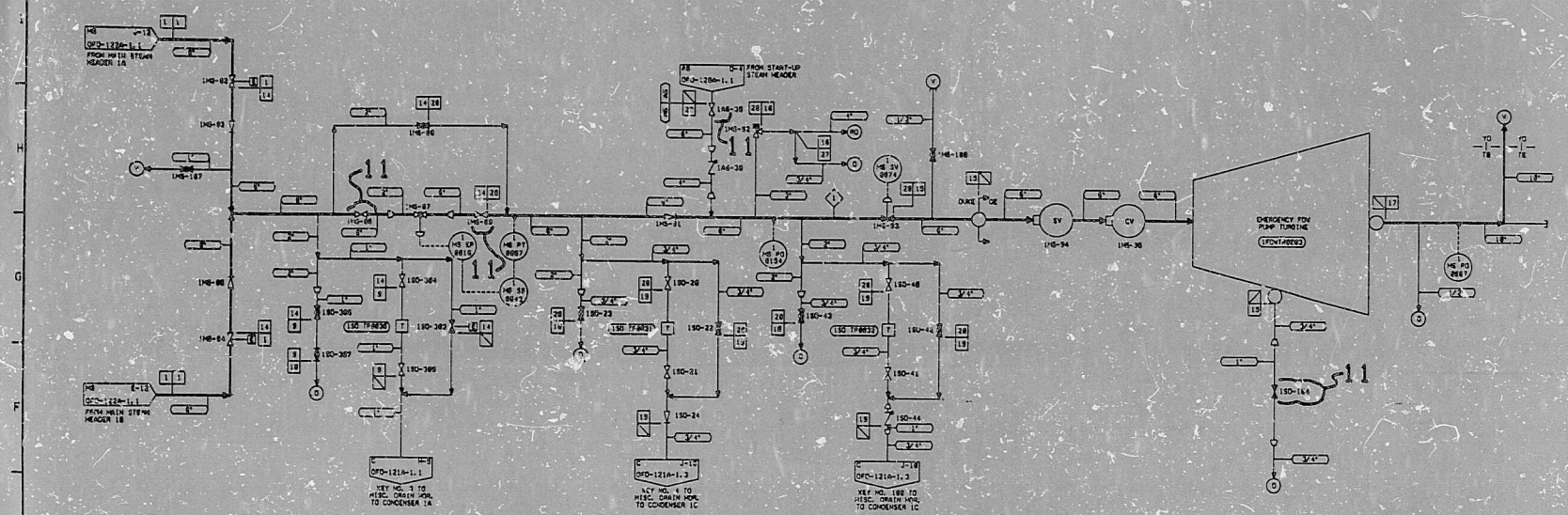


DWG NO. OFD-122A-1.4



ANSTEC
APERTURE
CARD

NOTES
1. OPERATING HOSE REPRESENTED BY BOLD LINES.
2. L.P. FROM D-11 TO CONDENSER FOR PUMP TUNING.
3. L.P. FROM D-11 TO CONDENSER FOR PUMP TUNING.
4. L.P. FROM D-11 TO CONDENSER FOR PUMP TUNING.
5. L.P. FROM D-11 TO CONDENSER FOR PUMP TUNING.
6. L.P. FROM D-11 TO CONDENSER FOR PUMP TUNING.
7. L.P. FROM D-11 TO CONDENSER FOR PUMP TUNING.
8. L.P. FROM D-11 TO CONDENSER FOR PUMP TUNING.
9. L.P. FROM D-11 TO CONDENSER FOR PUMP TUNING.
10. L.P. FROM D-11 TO CONDENSER FOR PUMP TUNING.

LINE NO.	LINE CLASS	DESIGN PRESS.	DESIGN TEMP.	MATERIAL	PIPE SIZE	PIPE SCHED.	INS.
1	A	150 PSIG	350°F	SA-192	12"	SCH. 40	1"
2	A	150 PSIG	350°F	SA-192	12"	SCH. 40	1"
3	A	150 PSIG	350°F	SA-192	12"	SCH. 40	1"
4	A	150 PSIG	350°F	SA-192	12"	SCH. 40	1"
5	A	150 PSIG	350°F	SA-192	12"	SCH. 40	1"
6	A	150 PSIG	350°F	SA-192	12"	SCH. 40	1"
7	A	150 PSIG	350°F	SA-192	12"	SCH. 40	1"
8	A	150 PSIG	350°F	SA-192	12"	SCH. 40	1"
9	A	150 PSIG	350°F	SA-192	12"	SCH. 40	1"
10	A	150 PSIG	350°F	SA-192	12"	SCH. 40	1"

DESIGN FLOW
33,000 LBS/H

NO.	REVISION	DATE	CHG	DATE	APPN	DATE	CIVIL	ELEC	Mech
1	REV. PER CHG-3712 & CHG-3728	08/01/60							
2	REV. PER CHG-4151, 4153, 4251, 3128	08/11/60							
3	REV. PER CHG-2997	08/11/60							
4	REV. PER CHG-2997	08/11/60							
5	REV. PER CHG-2997	08/11/60							
6	REV. PER CHG-2997	08/11/60							
7	REV. PER CHG-2997	08/11/60							
8	REV. PER CHG-2997	08/11/60							
9	REV. PER CHG-2997	08/11/60							
10	REV. PER CHG-2997	08/11/60							

OR CONDITION 1
DUNK POWER COMPANY
DOONES NUCLEAR STATION - UNIT 1
FLOW DIAGRAM OF
MAIN STEAM SYSTEM
(EMERGENCY FLOW TURBINE STEAM
SUPPLY AND EXHAUST)

DWG NO. OFD-122A-1.4

PDR RIDS

9607120090

