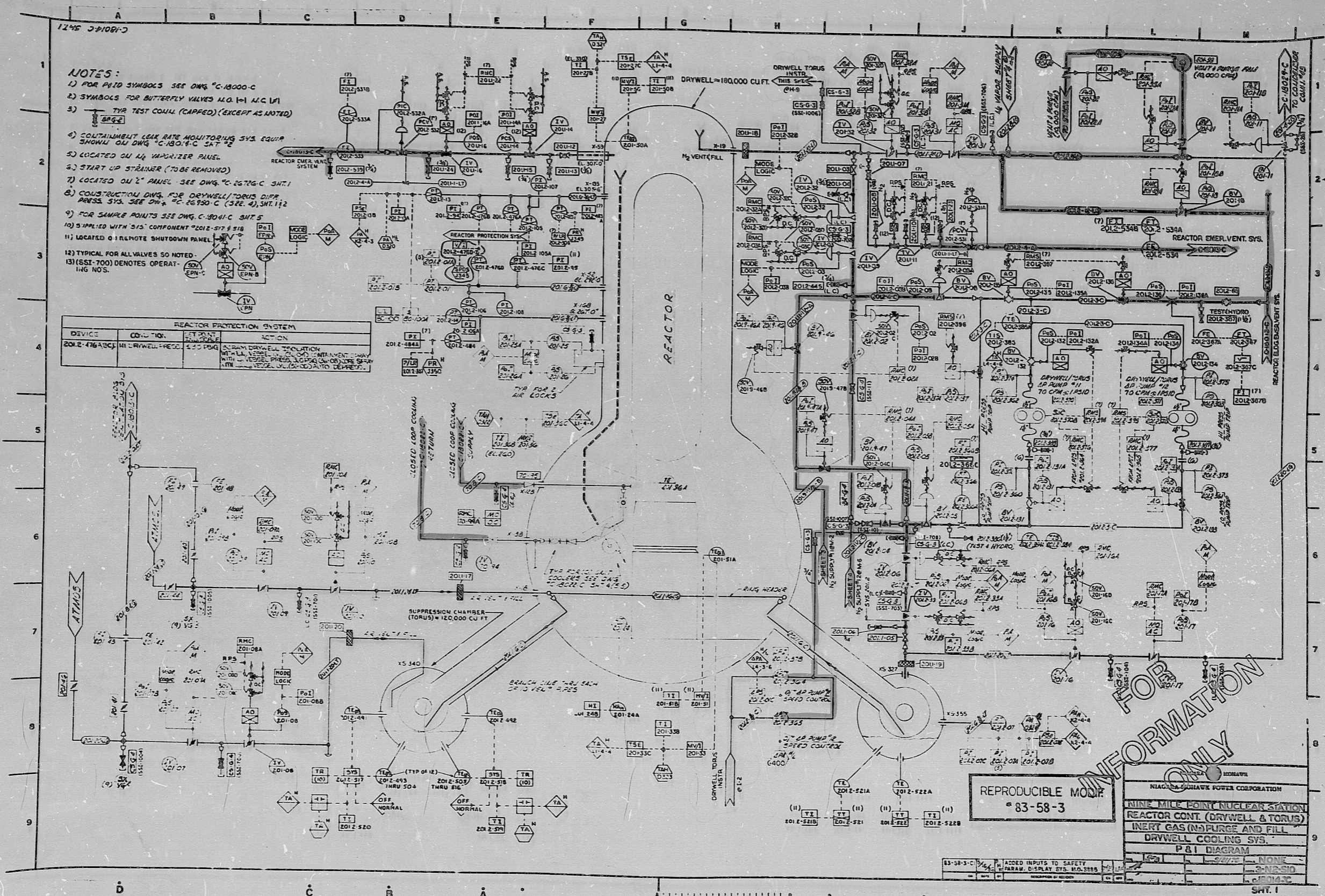


- NOTES:**
- 1) FOR P&ID SYMBOLS SEE DWG. C-18000-C
 - 2) SYMBOLS FOR BUTTERFLY VALVES I.I.O. I.I.C. I.I.A.
 - 3) TYP. TEST COIL (CAPPED) (EXCEPT AS NOTED)
 - 4) CONTAINMENT LEAK RATE MONITORING SYS. EQUIP. SHOWN ON DWG. C-18017-C SHT. 2
 - 5) LOCATED ON I.I. HORIZER PANEL
 - 6) START UP STRAINER (TO BE REMOVED)
 - 7) LOCATED ON 2" PANEL SEE DWG. C-26706-C SHT. 1
 - 8) CONSTRUCTION DWG. FOR DRYWELL/TORUS DIFF. PRESS. SYS. SEE DWG. C-26730-C (SHT. 4), SHT. 1 & 2
 - 9) FOR SAMPLE POINTS SEE DWG. C-18011-C SHT. 5
 - 10) SUPPLIED WITH SYS. COMPONENT #2012-517 & 518
 - 11) LOCATED ON 1" REMOTE SHUTDOWN PANEL
 - 12) TYPICAL FOR ALL VALVES SO NOTED
 - 13) (SST-700) DENOTES OPERATING NOS.

DEVICE	CONDITION	ACTION
2012-476 (SST)	DRYWELL PRESS. > 2.00 PSIG	SCRAM DRYWELL TROUSION WITH ALL VESSELS IN 75% OF MAXIMUM POWER WITH VESSEL PRESS. > 0.50 PSIG (DRYWELL) OR 0.50 PSIG (TORUS) VESSEL LOGIC TO DEPRESS.



REPRODUCIBLE MATERIAL
83-58-3

NIAGARA MOHAWK POWER CORPORATION
 NINE MILE POINT NUCLEAR STATION
 REACTOR CONT. (DRYWELL & TORUS)
 INERT GAS (N-PURGE AND FILL)
 DRYWELL COOLING SYS.
 P&I DIAGRAM
 SHEET # 1
 DATE: 12/15/82
 DRAWN BY: [illegible]
 CHECKED BY: [illegible]

DTM 3511

8610090477

PDR RIDS

8610090477

