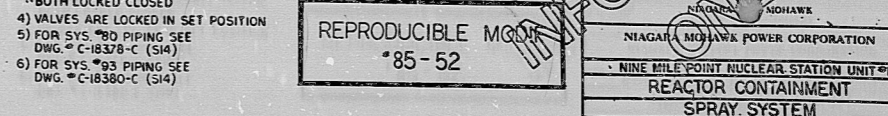
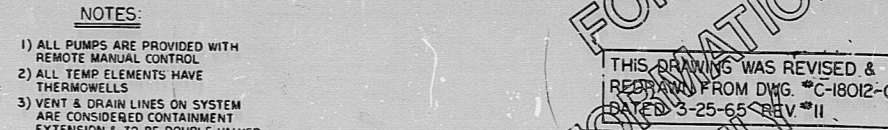
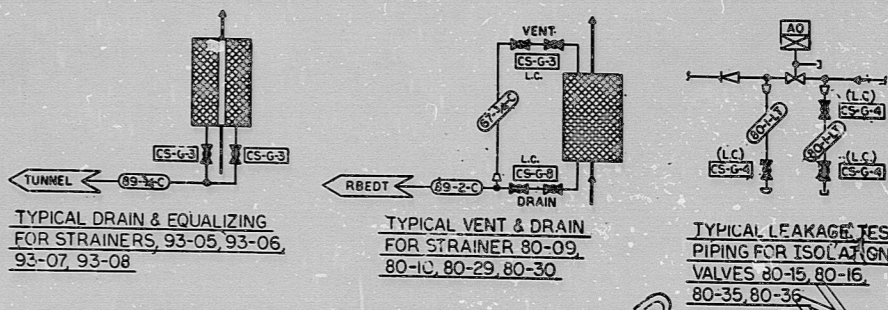
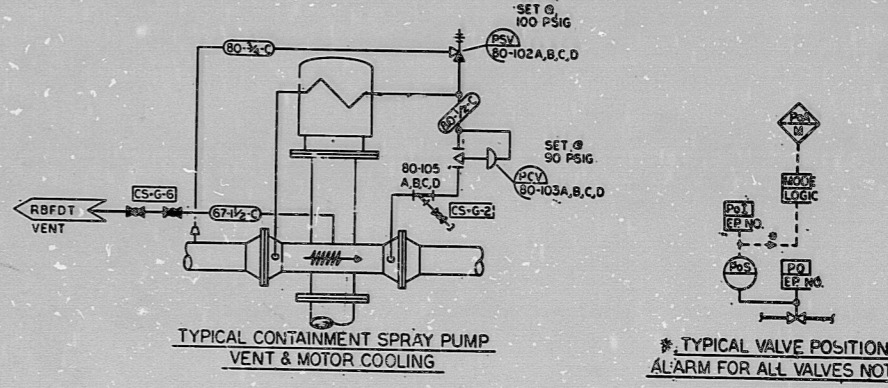
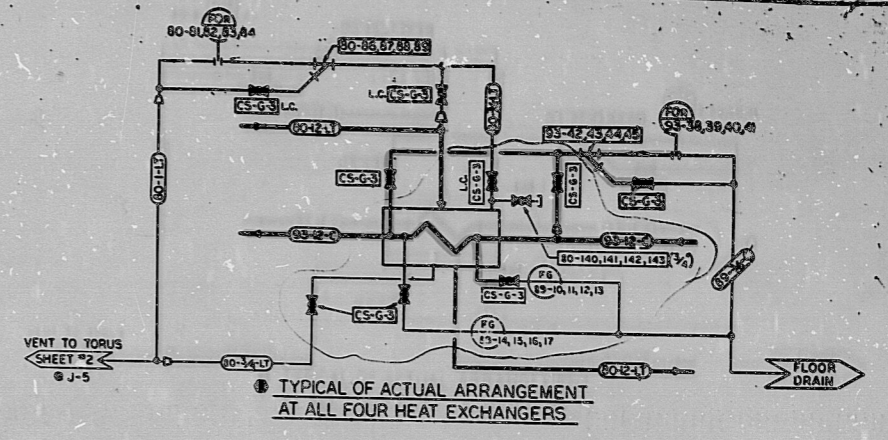
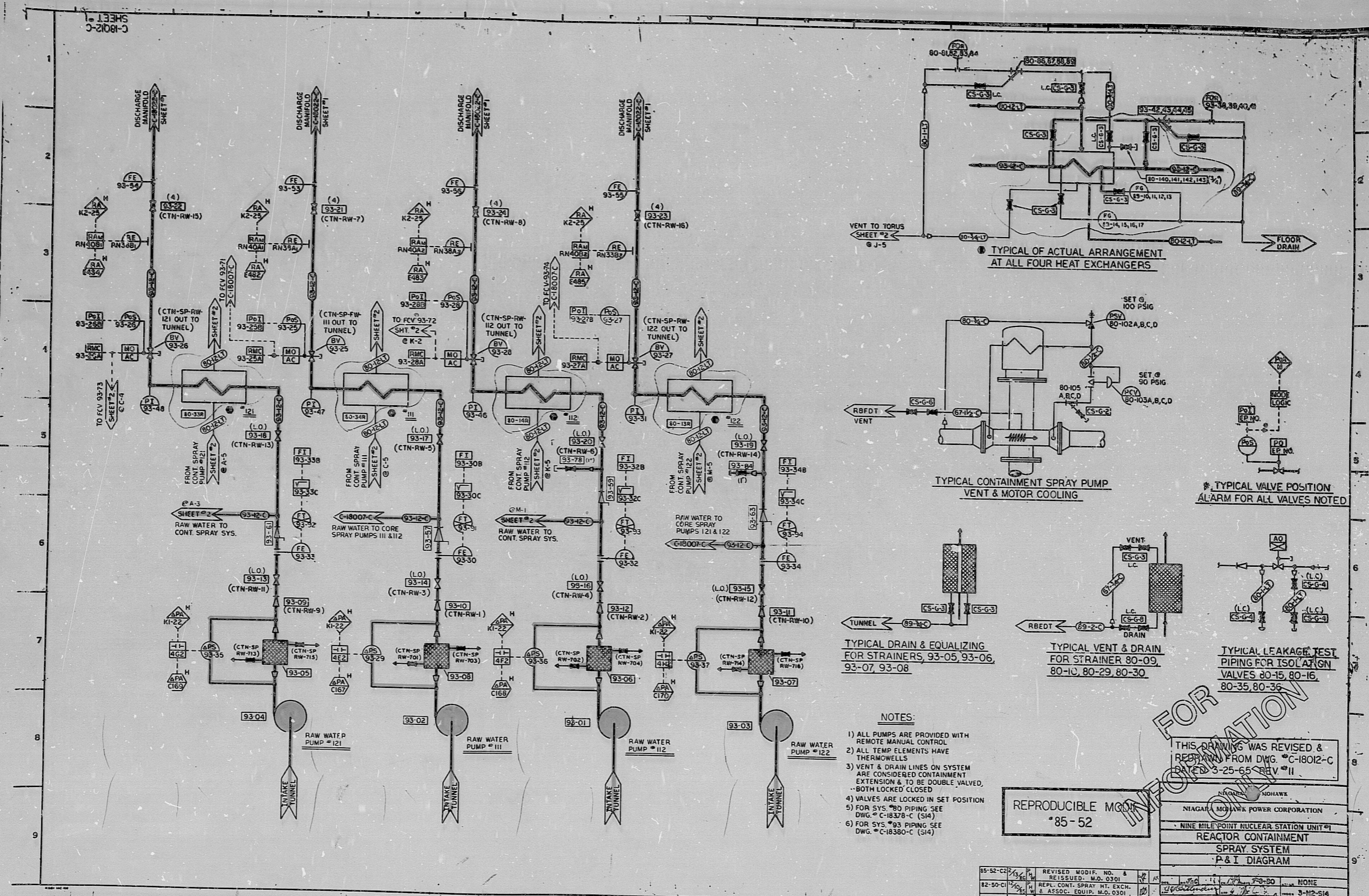


C-18012-C
SHEET #1



- NOTES:
- 1) ALL PUMPS ARE PROVIDED WITH REMOTE MANUAL CONTROL
 - 2) ALL TEMP ELEMENTS HAVE THERMOWELLS
 - 3) VENT & DRAIN LINES ON SYSTEM ARE CONSIDERED CONTAINMENT EXTENSION & TO BE DOUBLE VALVED, -BOTH LOCKED CLOSED
 - 4) VALVES ARE LOCKED IN SET POSITION
 - 5) FOR SYS. #80 PIPING SEE DWG. C-1837B-C (S14)
 - 6) FOR SYS. #93 PIPING SEE DWG. C-1838B-C (S14)

REPRODUCIBLE COPY
*85-52

THIS DRAWING WAS REVISED & REISSUED FROM DWG. C-18012-C DATED 3-25-65 REV. #11

REVISED	MODIF. NO.	DATE	BY	APP.	REASON
85-52-C2	1	3/25/65	J. J. ...		NONE
82-50-C	1	3/25/65	J. J. ...		REPL. CONT. SPRAY HT. EXCH. & ASSOC. EQUIP. M.D. 0301

9-MILE PL. DTM 3403 HOLD TO BILLY

TI
APERTURE
CARD

8610090455

PDR RIDS

8610090455

