

- NOTES
- (1) ANY ALARM ON FUEL POOL PANEL ANNUNCIATOR WILL TRIP OFF NORMAL ALARM ON MAIN CONTROL ROOM PANEL ANNUNCIATOR.
  - (2) LOSS OF INSTRUMENT AIR PRESSURE WILL TRIP PUMPS 54-01 AND 54-02.
  - (3) VALVE INTERLOCKS REQUIRE THAT VALVE 54-13 (54-13) BE CLOSED BEFORE 54-24 (54-24) CAN BE OPENED AND VICE VERSA.
  - (4) START-UP STRAINER.
  - (5) LOCATED ON FUEL POOL PANEL.
  - (6) ALL THERM ELEMENTS (TE) HAVE THERMOWELLS (TW).
  - (7) EQUIP FURNISHED WITH BLOWER (BB-106).
  - (8) LOCATED ON RADWASTE CONTROL PANEL.
  - (9) INSULATION FLANGES ARE REQUIRED AT EACH TRANSITION POINT BETWEEN DISSIMILAR METALS.
  - (10) ALL TEMPORARY PIPING FOR INITIAL SVS CLEANING TO BE SHOWN ON CONSTRUCTION DRAWINGS.

10	7/31	H	REVISED PER FIELD VERIFICATION. DTM 3200-10	
9	12/82	S	ADDED VALVES FP-3445 PER FIELD AS BUILT INFO	
8	10/82	S	REPLACED 54-22 (GATE VALVE) WITH PARALLEL VALVE-TYPE FIELD AS BUILT	
7	2/82	H	REMOVED C.L.L. SUPPLY & RETURN TO POST ACCIDENT SAMPLING SYS. M.O. 1850	

NIAGARA MOHAWK POWER CORPORATION  
 NINE MILE POINT NUCLEAR STATION  
 SPENT FUEL STORAGE POOL  
 FILTERING & COOLING SYSTEM  
 P & I DIAGRAM

11/82  
 11/82  
 11/82  
 11/82

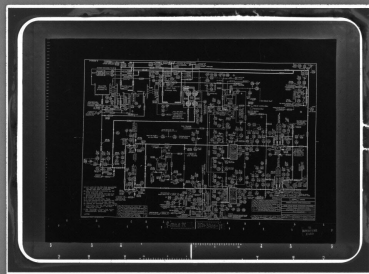
9-MILE PT. DTM-3200-18

TI  
APERTURE  
CARD

8610090432

PDR RIDS

8610090432



24