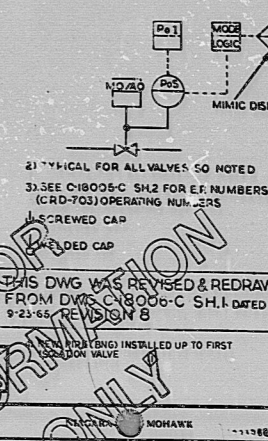


NOTES  
 1. SEE C-18022-C SH-3 FOR ER N8



- 2. TYPICAL FOR ALL VALVES, SO NOTED
- 3. SEE C-18025-C SH-2 FOR ER NUMBERS (CRD-703) OPERATING NUMBERS
- 4. SCREWED CAP
- 5. WELDED CAP
- 6. THIS DWG WAS REVISED & REDRAWN FROM DWG C-18005-C SH-1 DATED 12-28-66
- 7. MODIFICATION IN PROGRESS (REPRODUCIBLE EXISTS)

NO.	DATE	DESCRIPTION	BY	CHKD.
1	11/15/66	ISSUED		
2	12/28/66	REVISED PER FIELD VERIFICATION, DIM 3200-19		
3	1/15/67	REVISED PER FIELD VERIFICATION, DIM 3200-19		
4	2/15/67	REVISED PER FIELD VERIFICATION, DIM 3200-19		
5	3/15/67	FINAL AS BUILT, MD 2299		

NIAGARA MOHAWK POWER CORPORATION	
NINE MILE POINT NUCLEAR STATION UNIT NO. 1	
DRYWELL & TORUS ISOLATION VALVES	
P&I DRAWING	
REVISED	10-20-66
BY	MS
CHKD.	MS
DATE	10-20-66
SCALE	NONE
PROJECT	C-18005-C
SHEET 10F-3	

9-MILE PT. DTM 3200-19

TI APERTURE CARD

8610090423

PDR RIDs

8610090423

