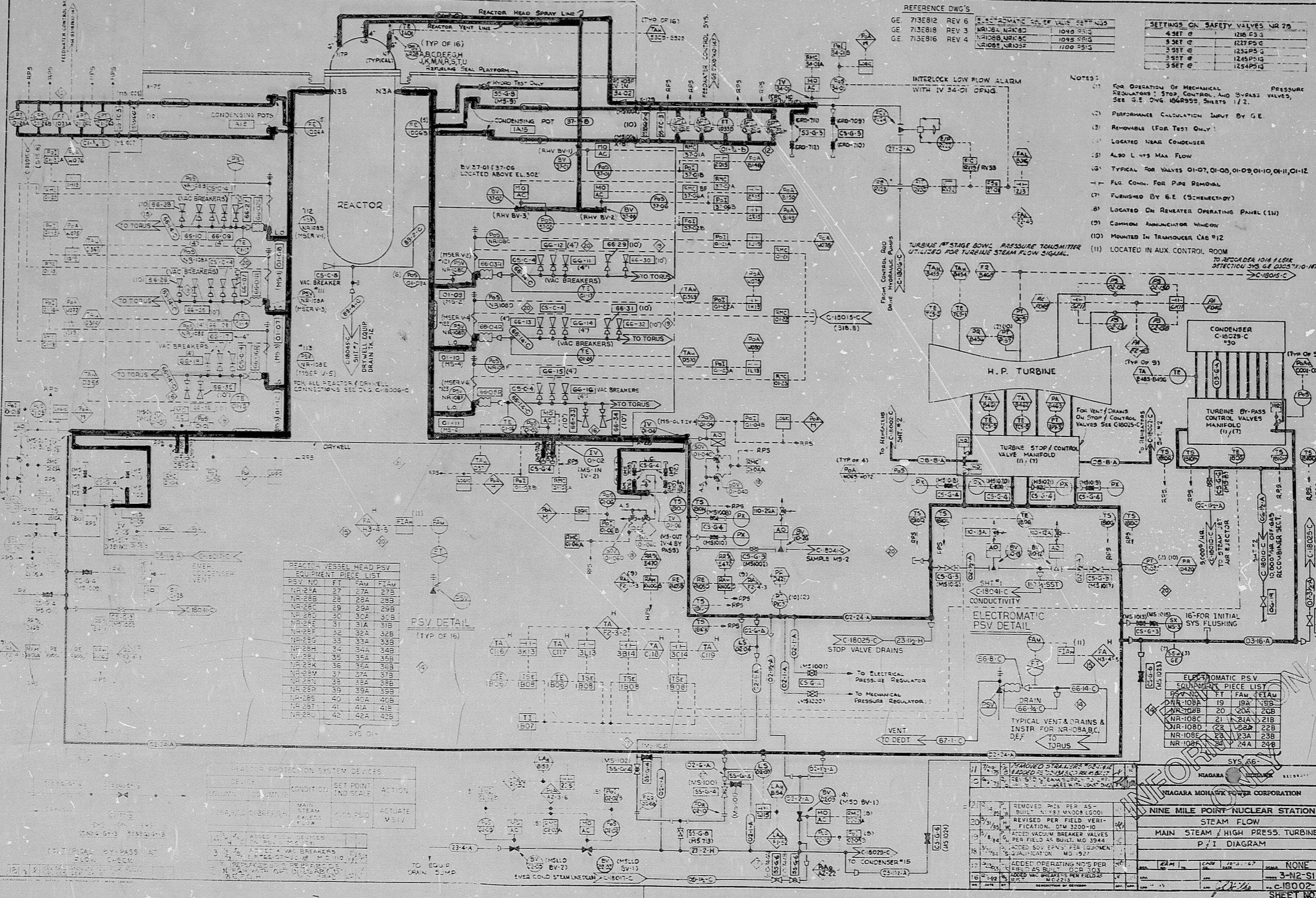


C-18002-C  
SHEET NO. 1



REFERENCE DWG'S

GE 713E812 REV 6	REACTOR VENT LINE	1000 PSIG
GE 713E818 REV 3	REACTOR VENT LINE	1000 PSIG
GE 713E816 REV 4	REACTOR VENT LINE	1000 PSIG

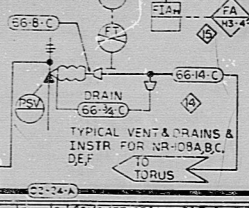
SETTINGS ON SAFETY VALVES NR 79	
4 SET @	1216 PSIG
5 SET @	1227 PSIG
3 SET @	1235 PSIG
3 SET @	1245 PSIG
3 SET @	1254 PSIG

- NOTES:
- FOR OPERATION OF MECHANICAL REGULATORS, STOP CONTROL AND 3-PASS VALVES, SEE G.E. DWG 1069950, SHEETS 1/2.
  - PERFORMANCE CALCULATION INPUT BY G.E.
  - REMOVABLE (FOR TEST ONLY).
  - LOCATED NEAR CONDENSER.
  - ALSO L 4PS MAX FLOW.
  - TYPICAL FOR VALVES 01-07, 01-08, 01-09, 01-10, 01-11, 01-12.
  - FIG. COMM. FOR PIPE REMOVAL.
  - FURNISHED BY G.E. (SCHEMATIC).
  - LOCATED ON REHEATER OPERATING PANEL (11).
  - COMMON ANNUNCIATOR WINDOW.
  - MOUNTED IN TRANSDUCER CAB #12.
  - LOCATED IN AUX. CONTROL ROOM.

PSV DETAIL

PSV NO.	FT.	FAM.	FLAW.
NR-27A	27	27A	27B
NR-28A	28	28A	28B
NR-29A	29	29A	29B
NR-30A	30	30A	30B
NR-31A	31	31A	31B
NR-32A	32	32A	32B
NR-33A	33	33A	33B
NR-34A	34	34A	34B
NR-35A	35	35A	35B
NR-36A	36	36A	36B
NR-37A	37	37A	37B
NR-38A	38	38A	38B
NR-39A	39	39A	39B
NR-40A	40	40A	40B
NR-41A	41	41A	41B
NR-42A	42	42A	42B

ELECTROMAGNETIC PSV DETAIL



ELECTROMAGNETIC PSV EQUIPMENT PIECE LIST

PSV NO.	FT.	FAM.	FLAW.
NR-108B	19	19A	19B
NR-108C	20	20A	20B
NR-108D	21	21A	21B
NR-108E	22	22A	22B
NR-108F	23	23A	23B
NR-108G	24	24A	24B

REMOVED PDS PER AS-BUILT, N.Y. STATE LICENSED ENGINEER, REVISED PER FIELD VERIFICATION, DTW 3200-10		DATE	BY
20	3/14/84		
ADDED SOLENOID VALVE BREAKER VALVES PER FIELD AS-BUILT, MO 3948		DATE	BY
18	3/14/84		
ADDED OPERATING AIDS PER FIELD AS-BUILT, MO 3948		DATE	BY
16	3/14/84		

TI APERTURE CARD

DEM 3411

8610090376

PDR RIDS

8610090376

