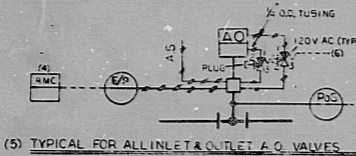
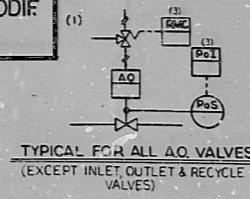


GENERAL NOTES:

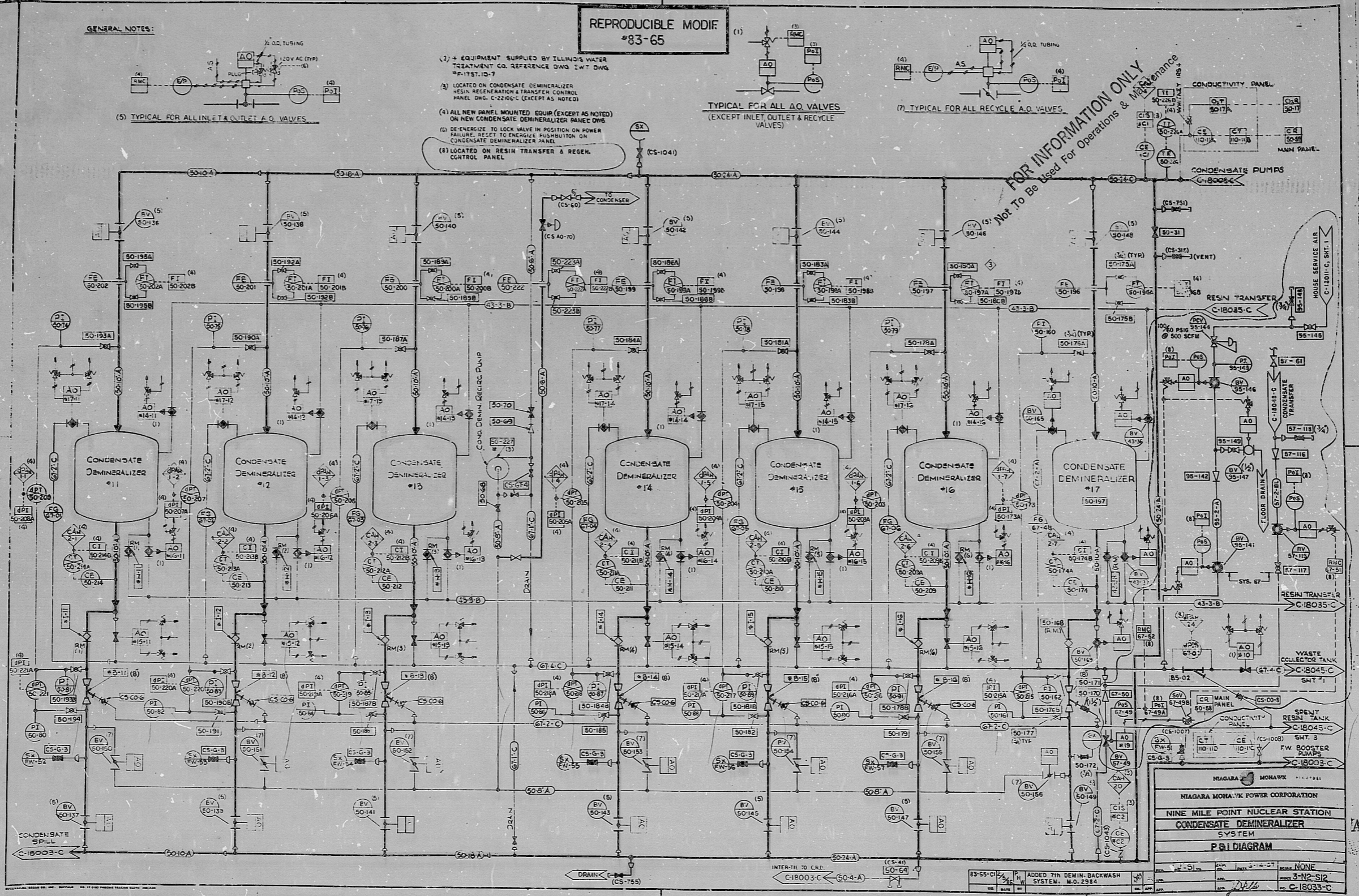


REPRODUCIBLE MODIF #83-65

- (1) LOCATED ON CONDENSATE DEMINERALIZER RESIN REGENERATION & TRANSFER CONTROL PANEL DWS C-22100-C (EXCEPT AS NOTED)
- (2) ALL NEW PANEL MOUNTED EQUIP (EXCEPT AS NOTED) ON NEW CONDENSATE DEMINERALIZER PANEL DWS
- (3) DE-ENERGIZE TO LOCK VALVE IN POSITION ON POWER FAILURE. RESET TO ENERGIZE AND POSITION ON CONDENSATE DEMINERALIZER PANEL
- (8) LOCATED ON RESIN TRANSFER & REGEN. CONTROL PANEL



FOR INFORMATION ONLY
 Not To Be Used For Operations & Maintenance



NIAGARA MOHAWK POWER CORPORATION	
NINE MILE POINT NUCLEAR STATION	
CONDENSATE DEMINERALIZER SYSTEM	
P & I DIAGRAM	
REV	DESCRIPTION
1	ADDED 7TH DEMIN. BACKWASH SYSTEM, M.O. 2984
2	
3	
4	
5	
6	
7	
8	
9	
10	
11	
12	
13	
14	
15	
16	
17	
18	
19	
20	
21	
22	
23	
24	
25	
26	
27	
28	
29	
30	
31	
32	
33	
34	
35	
36	
37	
38	
39	
40	
41	
42	
43	
44	
45	
46	
47	
48	
49	
50	
51	
52	
53	
54	
55	
56	
57	
58	
59	
60	
61	
62	
63	
64	
65	
66	
67	
68	
69	
70	
71	
72	
73	
74	
75	
76	
77	
78	
79	
80	
81	
82	
83	
84	
85	
86	
87	
88	
89	
90	
91	
92	
93	
94	
95	
96	
97	
98	
99	
100	

9-MILE PT. DTM-3464

TI APERTURE CARD

PDR RIDS 8610090279

8610090279

