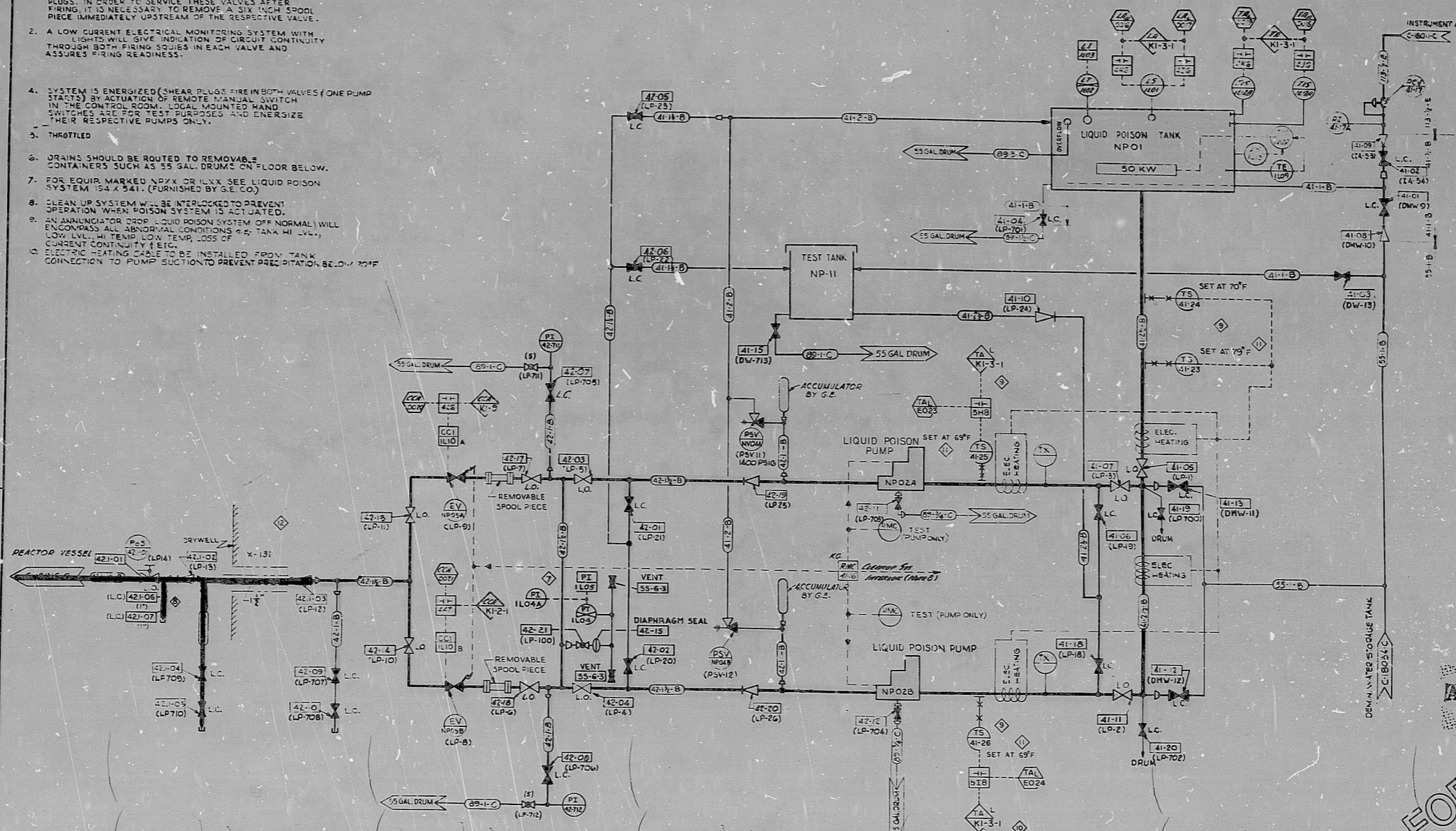


3-61091-3

NOTES

- EXPLOSIVE VALVES ARE DOUBLE SQUIB ACTUATED SHEAR PLUGS. IN ORDER TO SERVICE THESE VALVES AFTER FIRING, IT IS NECESSARY TO REMOVE A 3/4" INCH SPOOL PIECE IMMEDIATELY UPSTREAM OF THE RESPECTIVE VALVE.
- A LOW CURRENT ELECTRICAL MONITORING SYSTEM WITH LIGHTS WILL GIVE INDICATION OF CIRCUIT CONTINUITY THROUGH BOTH FIRING SQUIBS IN EACH VALVE AND ASSURES FIRING READINESS.
- SYSTEM IS ENERGIZED (SHEAR PLUGS FIRE IN BOTH VALVES / ONE PUMP STARTS) BY ACTUATION OF REMOTE MANUAL SWITCH IN THE CONTROL ROOM. LOCAL MOUNTED HAND SWITCHES ARE FOR TEST PURPOSES AND ENERGIZE THEIR RESPECTIVE PUMPS ONLY.
- THROTTLED
- DRAINS SHOULD BE ROUTED TO REMOVABLE CONTAINERS SUCH AS 55 GAL. DRUMS ON FLOOR BELOW.
- FOR EQUIP. MARKED NPXX OR ILXX, SEE LIQUID POISON SYSTEM 34-X-341. (FURNISHED BY GE CO)
- CLEAN UP SYSTEM WILL BE INTERLOCKED TO PREVENT OPERATION WHEN POISON SYSTEM IS ACTIVATED.
- AN ANNUNCIATOR PROP. LIQUID POISON SYSTEM OFF NORMAL WILL ENCOMPASS ALL ABNORMAL CONDITIONS (P.E. TANK HI LVL., LOW LVL., HI TEMP, LOW TEMP, LOSS OF CURRENT CONTINUITY, ETC.)
- ELECTRIC HEATING CABLE TO BE INSTALLED FROM TANK CONNECTION TO PUMP SUCTION TO PREVENT PRECIPITATION BELOW 70°F



SYMBOLS: NMP DWG # C-18000-C (EXCEPT AS NOTED)
 EV - EXPLOSIVE VALVE
 CCI - CURRENT CONTINUITY INDICATOR (LIGHT)
 REF. DWG. S.E. 148-F-718
 (LP-705) - OPERATING NUMBERS

TI
 APERTURE
 CARD

FOR
 INFORMATION
 ONLY

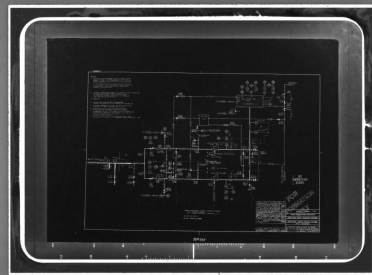
11	ADD	SETPOINTS PER FINAL		
10	REV	REVISED ANNUNCIATORS PER AS-BUILT, DTM 3200-10		
9	ADD	ADDED TS #S 41-23, 41-25, 41-26 FOR HEAT TRACING, MDO N/18311		
8	ADD	ADDED VALVES FOR EXCESSIVE LEAKAGE, 42-104, 42-107, 42-109		
7	ADD	REVISED ANNUNCIATORS PER AS-BUILT, DTM 3200-10		
6	ADD	REMOVED PS 41-23, 41-25, 41-26		
5	ADD	ADDED ANNUNCIATORS		
4	ADD	ADDED OPERATING NTS TO VALVES, C-18014 TO 41-14, ADDED DIAPHRAGM SEAL, 42-105		
3	ADD			
2	ADD	REMOVED PS PER AS-BUILT, 41-123, 41-124, 41-125		
1	ADD			

REACTOR LIQUID POISON SYSTEM P & I DIAGRAM	
DATE	APPROVED
11/10/54	
3-N2-S14	NONE
C-18013-C	

DFM 3411

PDR RIDS

8610090179



8610090179