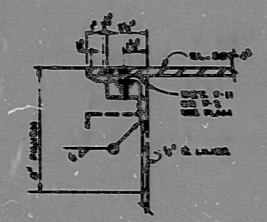
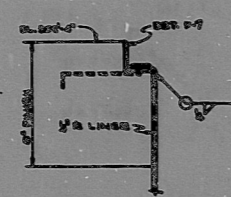


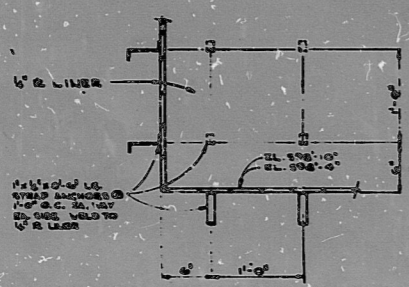
043-2



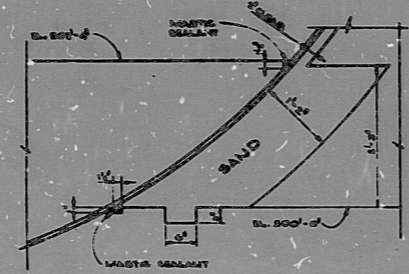
DETAIL - F



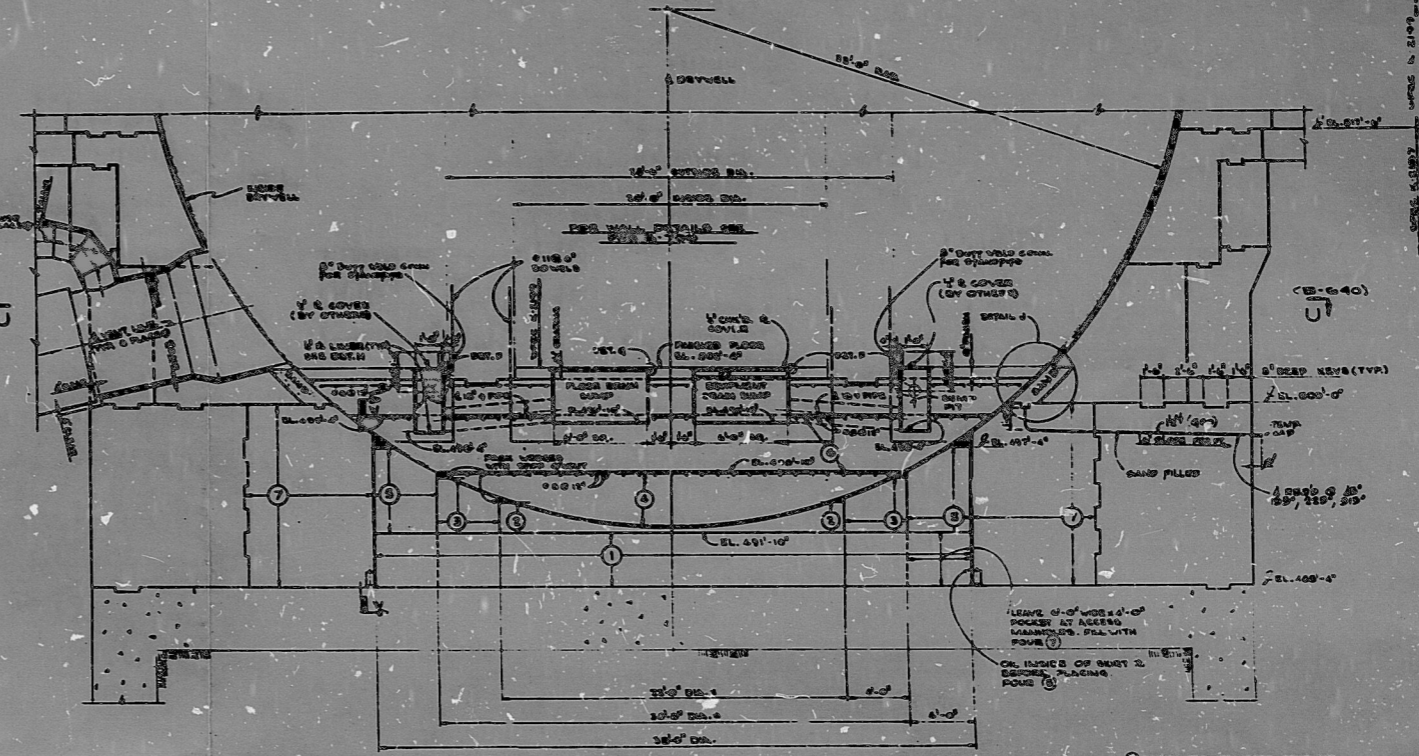
DETAIL - G



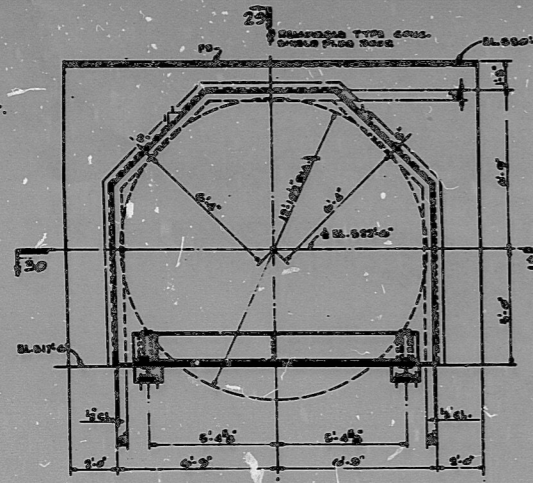
DETAIL - H



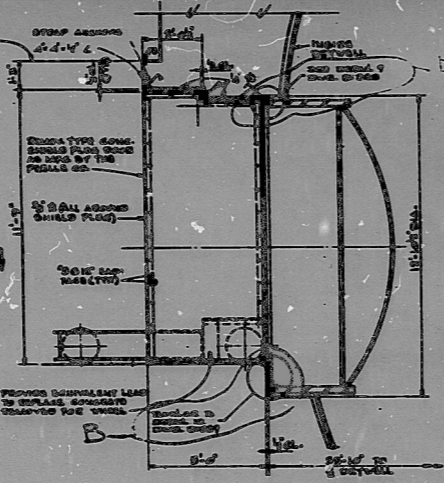
DETAIL - J



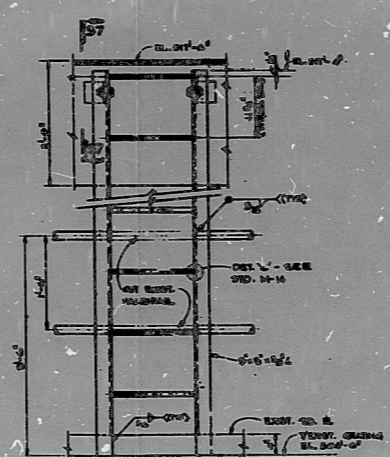
SECTION V-V



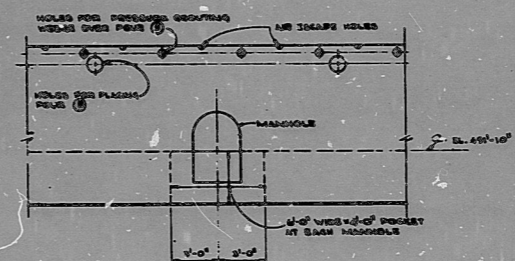
SECTION 28-28



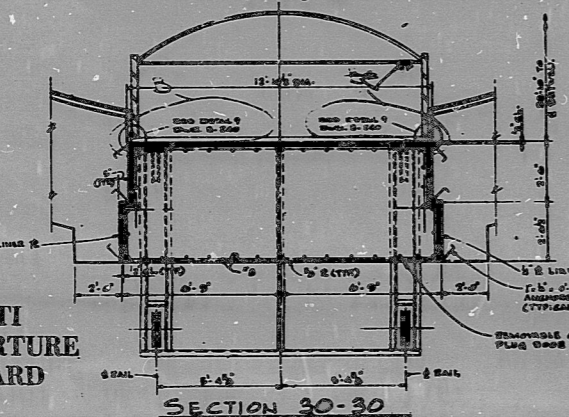
SECTION 29-29



DETAIL 6

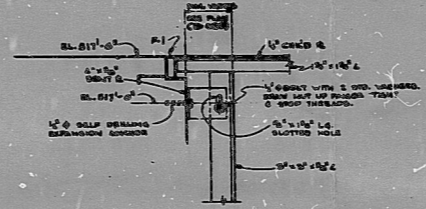


SECTION W-W

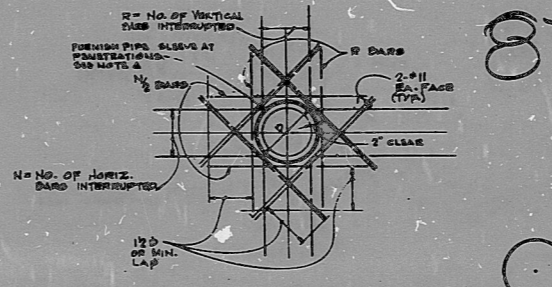


TI APERTURE CARD

SECTION 30-30



SECTION 37-37



TYPICAL DETAIL AT PENETRATION

- 1. REINFORCEMENT CONCRETE SHALL BE MAINTAINED BETWEEN SCHEDULED JOINTS.
- 2. REINFORCEMENT SHALL BE MAINTAINED BETWEEN SCHEDULED JOINTS.
- 3. REINFORCEMENT SHALL BE MAINTAINED BETWEEN SCHEDULED JOINTS.
- 4. REINFORCEMENT SHALL BE MAINTAINED BETWEEN SCHEDULED JOINTS.

- NOTES
- FOR GENERAL NOTES SEE DRAWING 043-1.
 - ALL WORK ON THIS SHEET SHALL BE DONE IN ACCORDANCE WITH THE REVISIONS TO THE DRAWING.
 - ALL WORK SHALL BE DONE IN ACCORDANCE WITH THE REVISIONS TO THE DRAWING.
 - ALL WORK SHALL BE DONE IN ACCORDANCE WITH THE REVISIONS TO THE DRAWING.

- REFERENCE DRAWINGS
- 043-1 REACTOR BUILDING FRAMING PLAN (SOUTH AREA)
 - 043-2 REACTOR BUILDING FRAMING PLAN (NORTH AREA)
 - 043-3 REACTOR BUILDING FRAMING PLAN (EAST AREA)
 - 043-4 REACTOR BUILDING FRAMING PLAN (WEST AREA)

FOR INFORMATION

87051504018

REVISIONS	REACTOR BUILDING FRAMING SECTIONS & DETAILS SHEET 2
1	ISSUED FOR CONSTRUCTION
2	REVISIONS TO THE DRAWING
3	REVISIONS TO THE DRAWING
4	REVISIONS TO THE DRAWING
5	REVISIONS TO THE DRAWING
6	REVISIONS TO THE DRAWING
7	REVISIONS TO THE DRAWING
8	REVISIONS TO THE DRAWING
9	REVISIONS TO THE DRAWING
10	REVISIONS TO THE DRAWING
11	REVISIONS TO THE DRAWING
12	REVISIONS TO THE DRAWING
13	REVISIONS TO THE DRAWING
14	REVISIONS TO THE DRAWING
15	REVISIONS TO THE DRAWING
16	REVISIONS TO THE DRAWING
17	REVISIONS TO THE DRAWING
18	REVISIONS TO THE DRAWING
19	REVISIONS TO THE DRAWING
20	REVISIONS TO THE DRAWING

DRESDEN NUCLEAR POWER STATION
UNIT 3
GENERAL ELECTRIC CO.
FOR
COMMONWEALTH EDISON CO.
CHICAGO, ILLINOIS

SARGENT & Lundy
INCORPORATED
ENGINEERS
CHICAGO

DATE: 1/15/54
BY: J. J. [Signature]
CHECKED: [Signature]
APPROVED: [Signature]

5-670

PDR RIDS

8705150408

