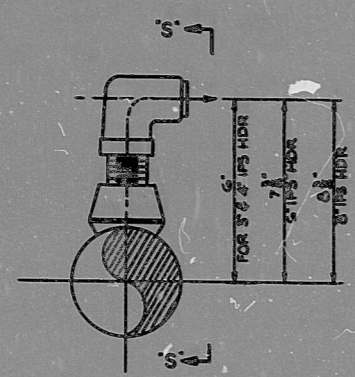
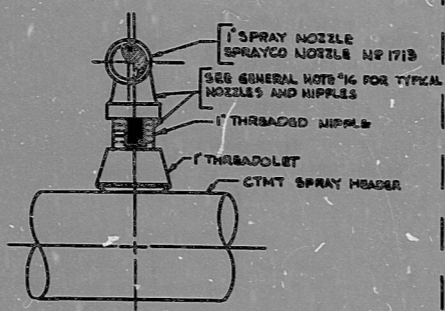


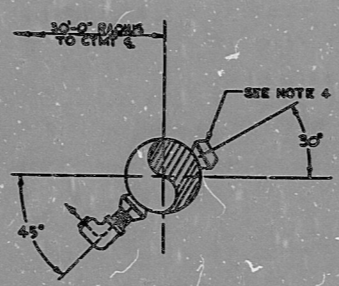
186421-D



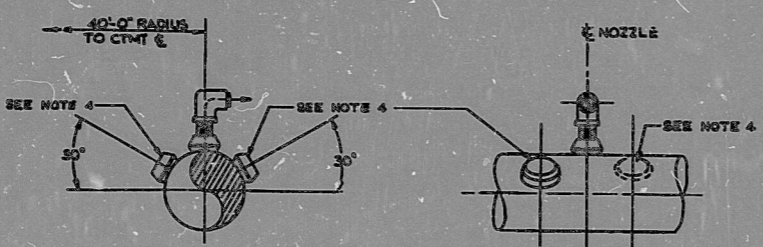
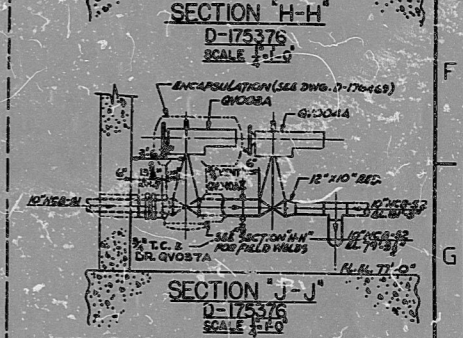
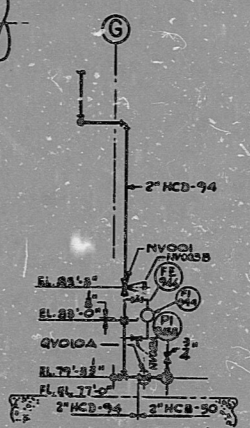
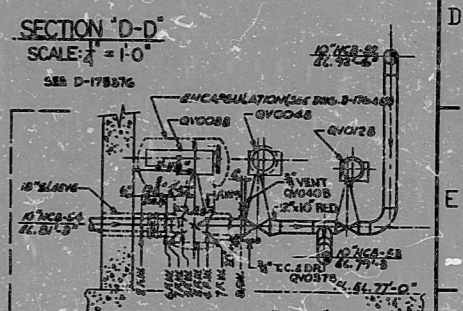
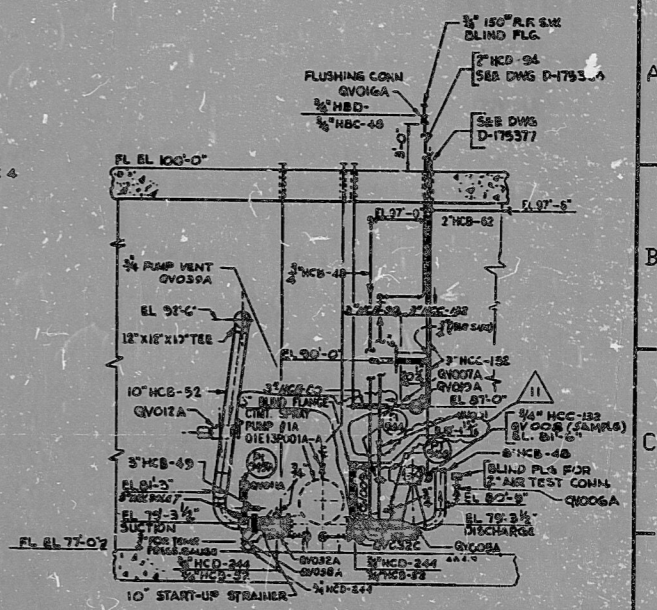
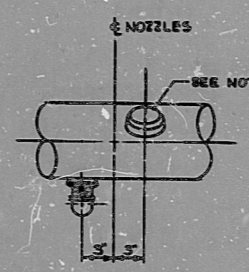
DETAIL "R-R"
TYPICAL NOZZLE ASSEMBLY



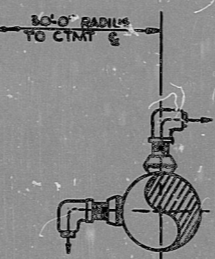
VIEW "S-S"



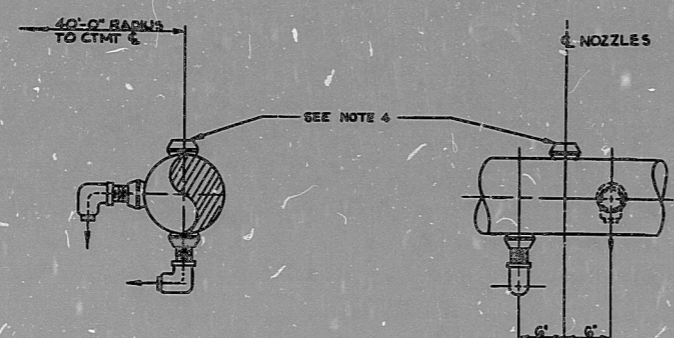
ORIENTATION AT LOCATION "E"



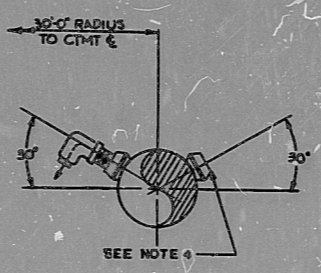
ORIENTATION AT LOCATIONS "A" & "C"



ORIENTATION AT LOCATIONS "F" & "I"



ORIENTATION AT LOCATIONS "B" & "D"



ORIENTATION AT LOCATION "G"

DETAILS OF HEADERS "1-A" & "1-B"
NO SCALE

DETAILS OF HEADERS "2-A" & "2-B"
NO SCALE

ANSTEC
APERTURE
CARD

- NOTES
- FOR GENERAL NOTES & REFERENCES SEE DWG. D-175376
 - CHARGE ALL PIPING ON THIS DWG. TO ACCOUNT NUMBER 2201-12-22-323C
 - WORK THIS DRAWING WITH DWGS. D-175376 THRU D-175381 (D-175491)
 - FIELD TO SEAL WITH THREADED PLUG IN ACCORDANCE WITH ASME, SECTION III, CLASS 2 REQUIREMENTS.

INSTALLATION PROCEDURE (TYPICAL SECTION "H-H")

- ALL WELDS TESTED PER SPEC. TO MEET 1/2"
- POSITION VALVE # MAKE # W-3
- POSITION LEFT PIPE # MAKE # W-4
- POSITION HALVES OF 3/4" DIA. SUC. & CAP # 20" O.D. NOZZLE # AND MAKE # W-5, # W-6, # W-7 & # W-8.
- POSITION CENTER SECTION OF ANCAP # 1 MAKE # W-9 & MOUNT ORIENTED.

REV.	NO.	DATE	BY	CHKD.	APP'D.	DESCRIPTION
1	1	11-29-71	JFK	RED	DEV	ISSUED FOR CONSTRUCTION
2	1	11-29-71	JFK	RED	DEV	REVISION PER DCP 75-1-8931, 001-009

013 D175381.DWG
 OVERLAY JK-01
 SOUTHERN COMPANY SERVICES, INC. FOR
 ALABAMA POWER COMPANY
 J.H. FARLEY NUCLEAR PLANT UNIT NO. 1
 CONTAINMENT SPRAY SYSTEM
 SECTIONS & DETAILS
 AS NOTED
 SHEET 1 OF 1 SHEETS
 D-175381
 REV. 11

9801070355

PDR RIDS

9801070355

