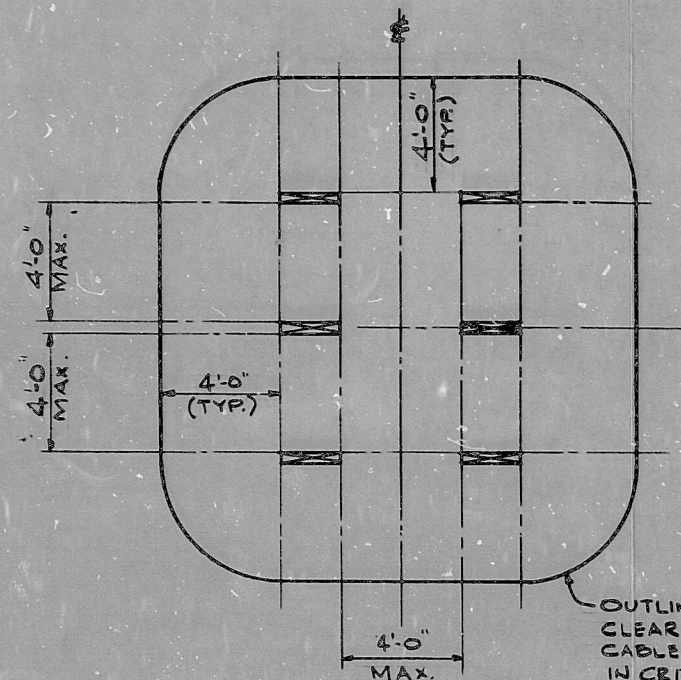


OUTLINE OF THE REQUIRED CLEAR AREA AROUND THOSE CABLE TRAYS DESCRIBED IN CRITERIA #1 (SEE NOTE 3.)

CRITERIA #1 DEFINITION (NO SPRINKLERS REQUIRED)

NOTES: (FOR CRITERIA #1)

1. CRITERIA #1 COVER TWO GENERAL CASES:
 - 1.1 A SINGLE CABLE TRAY WITH NO OTHER TRAYS WITHIN FOUR (4) FEET OF IT IN ANY DIRECTION.
 - 1.2 TWO CABLE TRAYS WITHIN FOUR (4) FEET OF EACH OTHER, BUT WITH NO OTHER CABLE TRAYS WITHIN FOUR (4) FEET OF EITHER OF THESE CABLE TRAYS IN ANY DIRECTION.
2. THE ORIENTATION OF THOSE CABLE TRAYS DESCRIBED IN CRITERIA #1 CAN VARY I.E. TWO PARALLEL HORIZONTAL/VERTICAL CABLE TRAYS, TWO PERPENDICULAR OR SKEWED HORIZONTAL/VERTICAL CABLE TRAYS, A COMBINATION OF ONE HORIZONTAL AND ONE VERTICAL TRAY. SOME TYPICAL EXAMPLES OF THE ACTUAL SITUATIONS FOUND WITHIN OUR PLANT ARE DESCRIBED IN CASES 1 THROUGH 6 ON SHEETS 3 THROUGH 4 OF THIS DRAWING. THESE CASES ARE REPRESENTATIVE OF THE TYPES OF JUDGEMENTS WHICH, OUT OF NECESSITY, WERE APPLIED IN THE INTERPRETATION OF THIS CRITERIA.
3. THE OUTLINE OF THE REQUIRED CLEAR AREA IS THE BOUNDARY OF THE SPACE WHICH CAN NOT BE ENTERED BY ANOTHER CABLE TRAY WITHOUT VIOLATING THE DEFINITION OF CRITERIA #1. THE OUTLINE OF THE CLEAR AREA WILL CHANGE AS A FUNCTION OF THE CABLE TRAY ORIENTATION. THE PRESENCE OF OFFSETS, SINGLE HORIZONTAL RIGHT ANGLE TEES OR SHORT RUNS (DESCRIBED IN DETAILS 1, 2, 3 AND 4 ON SHEET 2 OF THIS DRAWING) WITHIN THE OUTLINE OF THE REQUIRED CLEAR AREA IS NOT CONSIDERED A VIOLATION OF THE CRITERIA.



OUTLINE OF THE REQUIRED CLEAR AREA AROUND THOSE CABLE TRAYS DESCRIBED IN CRITERIA #2 (SEE NOTE 3.)

CRITERIA #2 DEFINITION (SPRINKLERS REQUIRED)

NOTES: (FOR CRITERIA #2)

1. CRITERIA #2 COVER FOUR GENERAL CASES:
 - 1.1 THREE, FOUR, FIVE OR SIX CABLE TRAYS WITHIN FOUR (4) FEET OF EACH OTHER, BUT WITH NO OTHER CABLE TRAYS WITHIN FOUR (4) FEET OF ANY ONE OF THESE CABLE TRAYS IN ANY DIRECTION.
2. THE ORIENTATION OF THOSE CABLE TRAYS DESCRIBED IN CRITERIA #2 CAN VARY I.E. SIX PARALLEL HORIZONTAL/VERTICAL CABLE TRAYS, SIX PERPENDICULAR OR SKEWED HORIZONTAL/VERTICAL CABLE TRAYS, ANY COMBINATION OF HORIZONTAL AND VERTICAL TRAYS. SOME TYPICAL EXAMPLES OF THE ACTUAL SITUATIONS FOUND WITHIN OUR PLANT ARE DESCRIBED IN CASES 10 THROUGH 12 ON SHEETS 5 THROUGH 6 OF THIS DRAWING. THESE CASES ARE REPRESENTATIVE OF THE TYPES OF JUDGEMENTS WHICH, OUT OF NECESSITY, WERE APPLIED IN THE INTERPRETATION OF THIS CRITERIA.
3. THE OUTLINE OF THE REQUIRED CLEAR AREA IS THE BOUNDARY OF THE SPACE WHICH CAN NOT BE ENTERED BY ANOTHER CABLE TRAY WITHOUT VIOLATING THE DEFINITION OF CRITERIA #2. THE OUTLINE OF THE CLEAR AREA WILL CHANGE AS A FUNCTION OF THE CABLE TRAY ORIENTATION. THE PRESENCE OF OFFSETS, SINGLE HORIZONTAL RIGHT ANGLE TEES OR SHORT RUNS (DESCRIBED IN DETAILS 1, 2, 3 AND 4 ON SHEET 2 OF THIS DRAWING) WITHIN THE OUTLINE OF THE REQUIRED CLEAR AREA IS NOT CONSIDERED A VIOLATION OF THE CRITERIA.

RE DRAWING NO.		PP&L DRAWING NO.	
REFERENCE DRAWINGS			
MF			
0 FOR ENGR. USE			
REV.	DESCRIPTION	DR CH	APPROVED DATE
NON-QUALITY RELATED DWG CLASS 3			
SUSQUEHANNA S.E.S.			
UNIT 1 & 2			
REACTOR BUILDING			
APPENDIX R-DEVIATION REQUEST #6			
STRUCT. STEEL REVIEW			
ACCEPTANCE CRITERIA			
AREA	ELEV.	SCALE: 1/4" = 1'-0"	
PENNSYLVANIA POWER & LIGHT COMPANY			
ALLENTOWN PA.			
PP&L DRAWING NO.	SHEET NO.	REV. NO.	
C-205923	1		
RE DRAWING NO.	C-1706		0

8605220130

TI
APERTURE
CARD

PDR RIDS

8605220130

