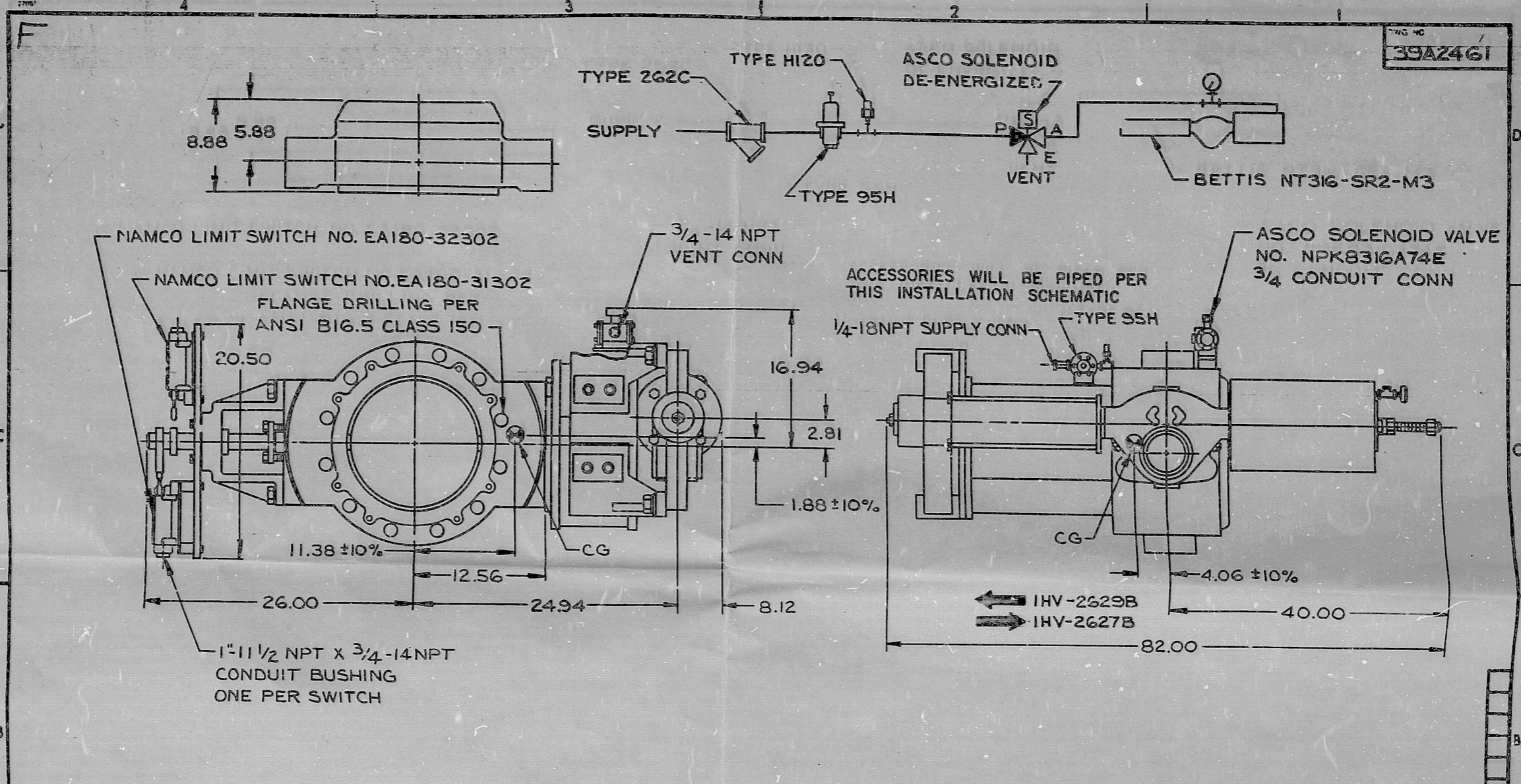
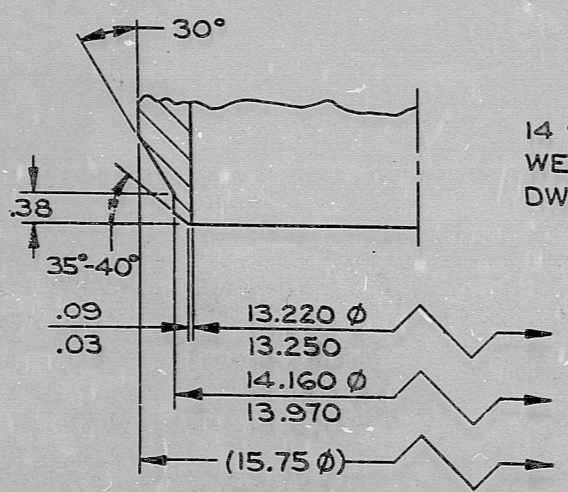


39A2461



DISC CHORDAL SWING Ø AT THE VALVE FACE IS 11.81  
TOTAL VALVE WEIGHT: 925 LBS ±10%

UNLESS OTHERWISE SPECIFIED:  
UNIT OF MEASURE: INCHES  
ENVELOPE DIMENSIONS ARE ±.25



DIMENSIONS CERTIFIED CORRECT		BY <i>Kevin A. Lappaluto</i> DATE 7-22-83	
VALVE PRESS/TEMP RATING: ANSI B16.34-1977 CLASS 150			
CUST: GEORGIA POWER COMPANY		14" BODY	
P.O. NO.: PAV-206 VOGTLE UNIT I		NT316-SR2-M3-9280	
ORDER NO.: 22B-XSAC03-NIU		BETTIS ACTUATED	
TAG NO.: 1HV-2627B, 1HV-2629B		CONTROL VALVE	
SERIAL NO.: 8672366, 8672367		CW TO CLOSE VALVE	
		SHAFT ROTATION	
		HORIZ PIPE, VERT SHAFT	
DATE	REVISIONS	DWN	WGR
7-9-83	A	7-8-83	7-8-83
11-11-83	B	KAL	7-22-83
12-13-83	C	JCD	8-4-83
11-11-83			
Fisher Controls 1983		Fisher Controls Marshalltown, Iowa, USA	
ITEM 180, 182		DWG. NO. 39A2461	
SCALE NONE		REV. C	

ITI  
APERTURE  
CARD

8605130334



**PDR RIDS**

**8605130334**

