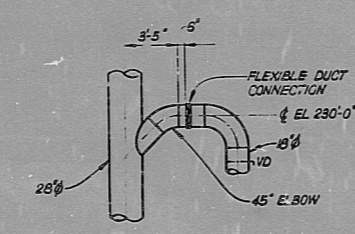
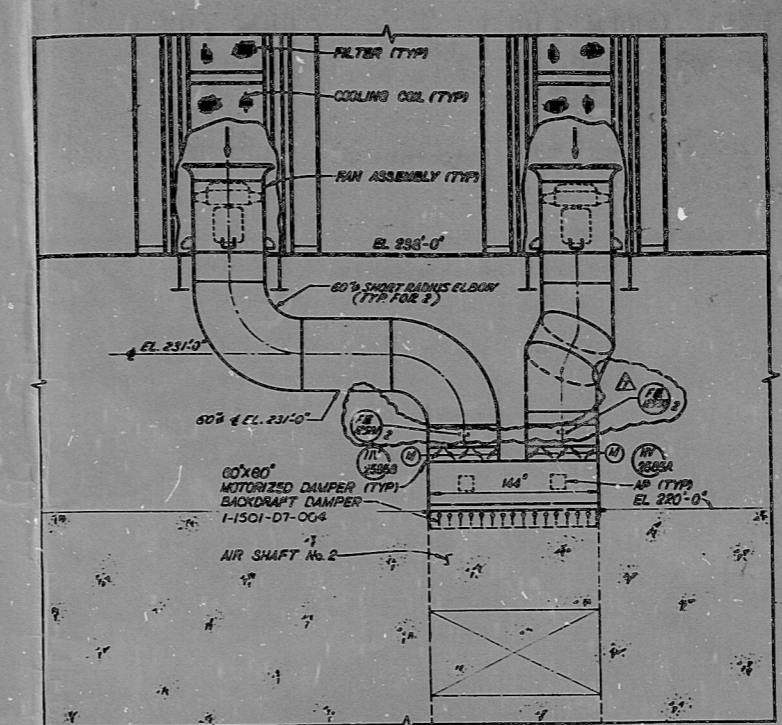


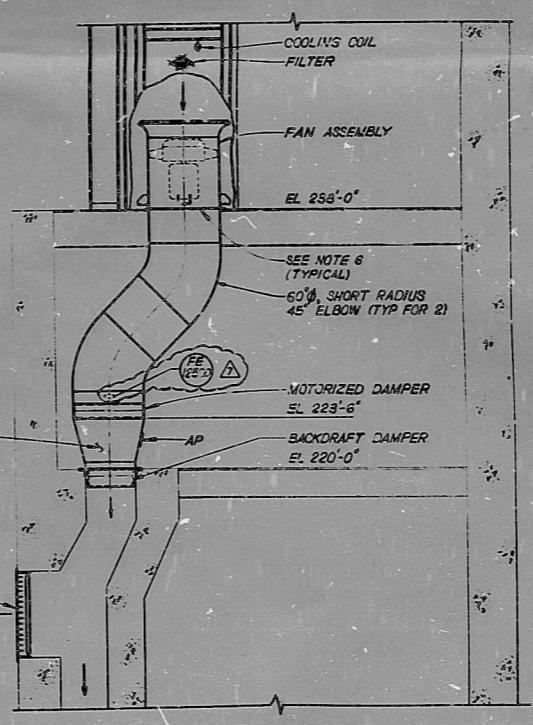
PLAN EL 210'-0" TO 238'-0"
SCALE 1/4" = 1'-0"



SECTION D
SCALE 1/4" = 1'-0"



SECTION A
SCALE 1/4" = 1'-0"



SECTION B
SCALE 1/4" = 1'-0"

- NOTES:**
- FOR GENERAL NOTES AND LEGEND SEE DWG AX4DJ001 AND AX4DJ002.
 - FOR AREA ABOVE SEE DWG IX4DJ4112
 - FOR AREA BELOW SEE DWG IX4DJ4113
 - ALL DUCTWORK SHOWN IS PROJECT CLASS O15 UNLESS OTHERWISE NOTED.
 - FOR FLOW TRANSMITTER LOCATION SEE CONTROL BLDG DRAWING IX4DJ2103.
 - DUCTWORK SHALL BE BOLTED TO THE BOTTOM OF SYSTEM I-1501-AT-007-000 & 008-000 UNITS BOLT PATTERN TO CONFORM TO DWG AX2D67W001 REQUIREMENTS.
 - THE DUCT COMPANION FLANGE AT THE HVAC/PIPING INTERFACE SHALL MATCH THE PIPE FLANGE FOR OUTSIDE DIAMETER AND BOLT HOLE SIZE AND LAYOUT. THE BOLTING FOR THIS JOINT SHALL BE PER 212 PIPING REQUIREMENT.

REFERENCE DRAWINGS
 P&ID IX4DB212, 213, 251 & 213-1
 CIVIL IX2D46A018
 STRUCTURAL IX2D46P114
 ARCHITECTURAL
 PIPING IX4DLB0E, B0B
 PLUMBING IX4DM4103
 ELECTRICAL IX3DM508 & 513
 DUCT SUPPORT

412018067A
 ACTIVITY PACKAGE NO. 412011118A

BECHTEL
 LOS ANGELES

GEORGIA POWER COMPANY
 ALVIN W. VOGTLE NUCLEAR PLANT

CONTAINMENT BLDG
 AREA 18 LEVEL 1
 PLAN EL. 210'-0" TO 238'-0"

SCALE 1/4" = 1'-0"
 DRAWING NO. 11004113
 SHEET 7

NO.	REVISIONS	DATE	DR.	CHK.	SUPV.	ESS.	OFF.	P.E.	DATE	NO.	REVISIONS	DATE	DR.	CHK.	SUPV.	ESS.	OFF.	P.E.	DATE	NO.	REVISIONS	
1	ISSUED FOR CONSTRUCTION																					
2	REVISIONS																					

8605130323

API
 APERTURE
 CARD

PDR RIDS

8605130323

