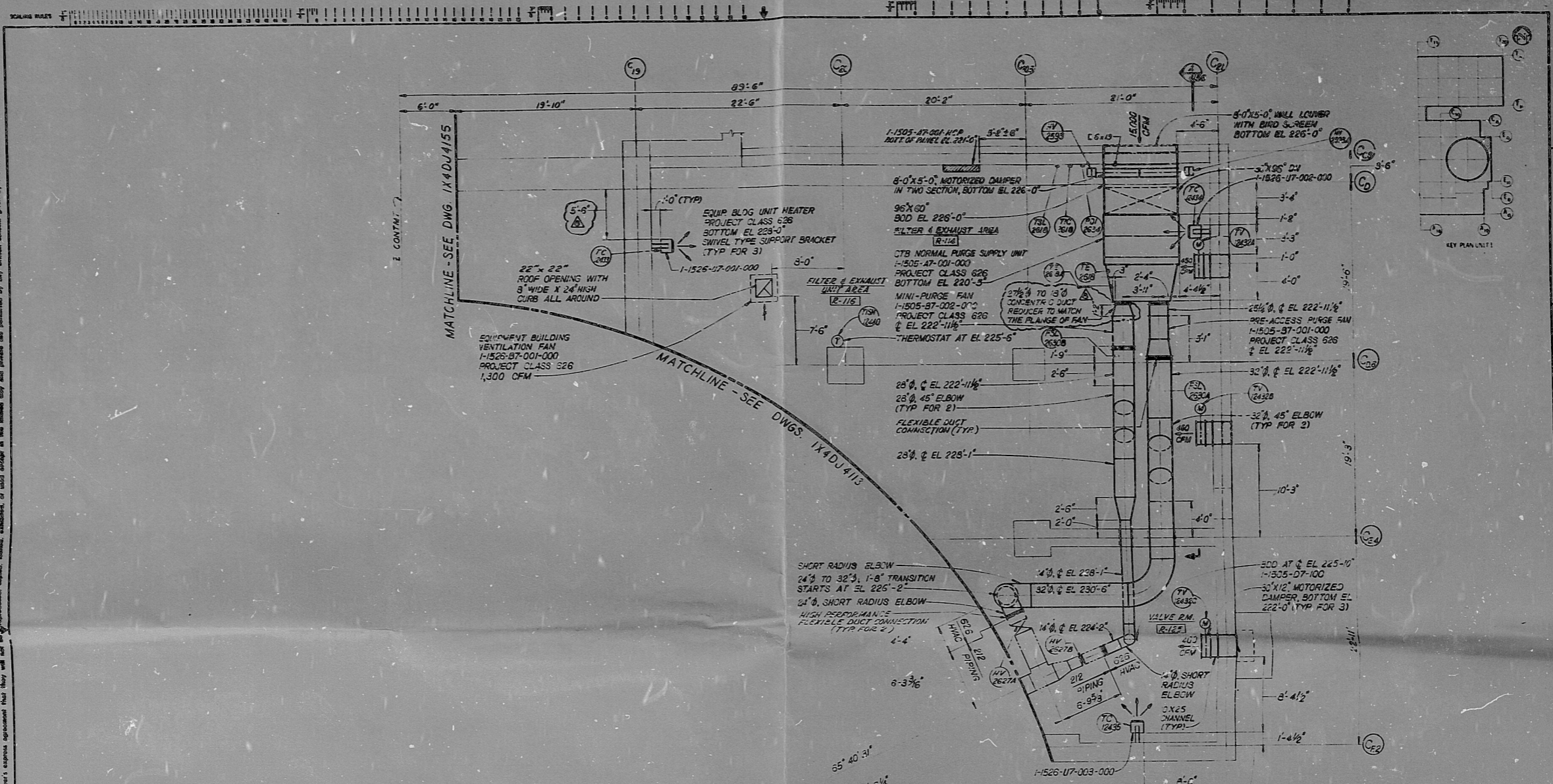


IX40J4143

30X

THIS DRAWING IS THE PROPERTY OF BECTEL. IT IS TO BE USED ONLY FOR THE PROJECT AND SITE SPECIFICALLY IDENTIFIED HEREIN. IT IS NOT TO BE REPRODUCED, COPIED, OR TRANSMITTED IN ANY FORM OR BY ANY MEANS, ELECTRONIC OR MECHANICAL, INCLUDING PHOTOCOPYING, RECORDING, OR BY ANY INFORMATION STORAGE AND RETRIEVAL SYSTEM, WITHOUT THE WRITTEN PERMISSION OF BECTEL.

The drawing and the design it covers are the property of BECTEL. They are made based on the licensee's express agreement that they will not be reproduced, copied, loaned, exhibited, or sold except in the limited way and under the limited conditions specified in the license to the licensee.



NOTES:

- FOR GENERAL NOTES AND LEGEND SEE DWG. AREA 101 AND 102.
- FOR AREA BELOW SEE DWG. 103 AND 104.
- ALL DUCTWORK SHOWN IS PROJECT CLASS 626 UNLESS OTHERWISE NOTED.

REVISIONS

NO.	DATE	BY	CHKD.	DESCRIPTION
1				ISSUED FOR CONSTRUCTION

ACTIVITY PACKAGE NO. 412111114E

BECTEL
LOS ANGELES

GEORGIA POWER COMPANY
ALVIN W. VOGTLE NUCLEAR PLANT

EQUIPMENT BUILDING FAN
FAN - LEVEL 1
FAN EL. 226'-0" TO 226'-0"

NO.	DATE	DR.	CHKD.	SUPV.	EGS	ENGR.	P.E. DATE	NO.	REVISIONS
1									ISSUED FOR CONSTRUCTION

8605130311

MT APERTURE CARD

PDR RIDS

8605130311

