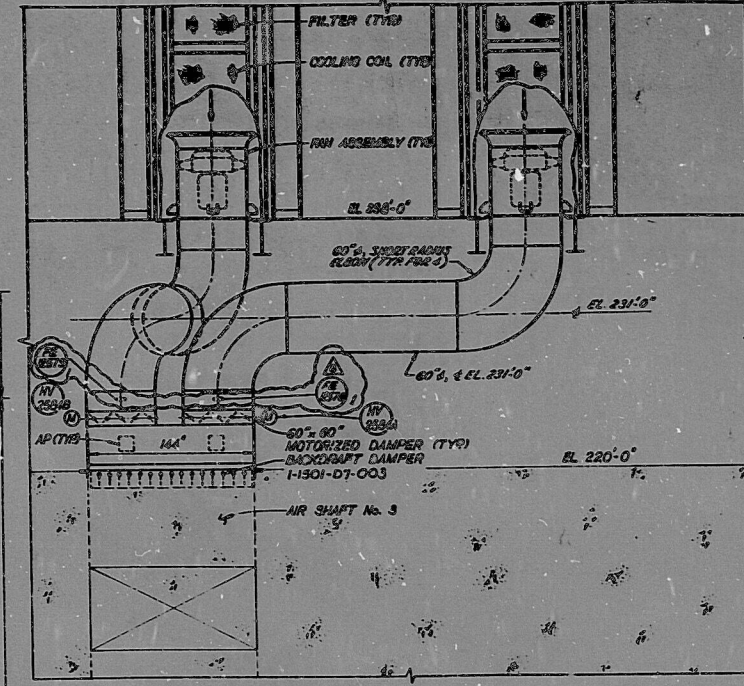
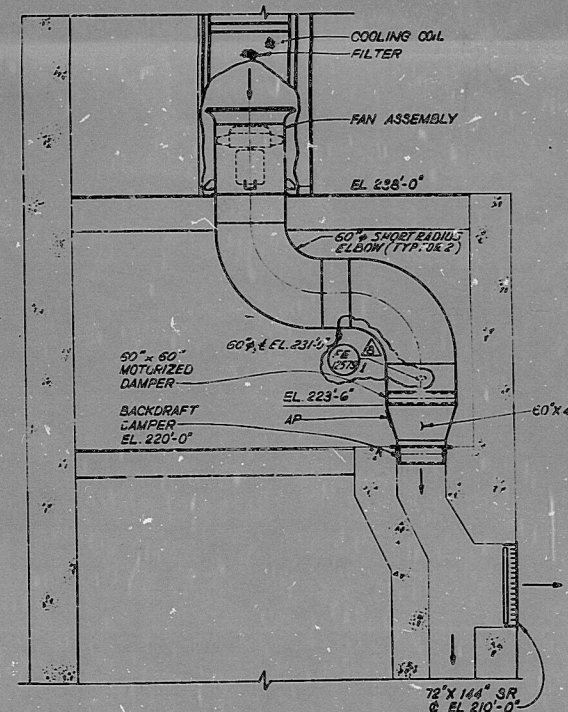


PLAN EL 210'-0" TO 238'-0"
SCALE: 1/4" = 1'-0"



SECTION A
SCALE: 1/4" = 1'-0"



SECTION B
SCALE: 1/4" = 1'-0"

- NOTES:**
- FOR GENERAL NOTES AND LEGEND SEE DWG IX4DJ001 AND IX4DJ002.
 - FOR AREA ABOVE SEE DWG IX4DJ4122.
 - FOR AREA BELOW SEE DWG IX4DJ4123.
 - ALL DUCTWORK SHOWN IS PROJECT CLASS OAS UNLESS OTHERWISE NOTED.
 - FOR FLOW TRANSMITTER LOCATION SEE CONTROL BLDG DWG IX4DJ1111.
 - DUCTWORK SHALL BE BOLTED TO THE BOTTOM OF CTB COOLING UNITS 1-1501-AT-006-000 AND 1-1501-AT-006-000 PATTERN TO CONFORM TO DRAWING IX4DJ11001 REQUIREMENT 7.3.
 - THE DUCT COMPANION FLANGE AT THE SHACO PIPING INTERFACE SHALL MATCH THE PIPE FLANGE FOR OUTSIDE DIAMETER AND BOLT HOLD SIZE AND LAYOUT. THE BOLTING FOR THIS JOINT SHALL BE PER SIS PIPING REQUIREMENTS.

- REFERENCE DRAWINGS:**
- PAID IX4CB212, 215 & 251
 - CIVIL IX4D48A14
 - STRUCTURAL IX4D48F14
 - ARCHITECTURAL IX4DLA02, C03
 - PLUMBING IX4DM4133
 - ELECTRICAL IX4DK503 & 519
 - DUCT SUPPORTS IX4D48W04 & 211

41E1Q12067A
ACTIVITY PACKAGE NO. 612101116A

DECTEL
LOS ANGELES

GEORGIA POWER COMPANY
ALVIN W. VOGTLE NUCLEAR PLANT

CONTAINMENT BLDG.
AREA AC LEVEL 1
PLAN EL. 210'-0" TO 238'-0"

SCALE: AS NOTED
DRAWING NO. 138-0123
JOB NO. 5218

TI
APERTURE
CARD

NO.	REVISIONS	DATE	BY	CHK	APP	REVISIONS	DATE	BY	CHK	APP
1	ISSUED FOR CONSTRUCTION					1				
2						2				
3						3				
4						4				
5						5				
6						6				
7						7				

8605130303

PDR RIDS

8605130303

