

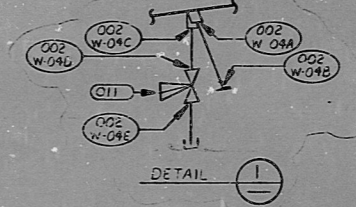
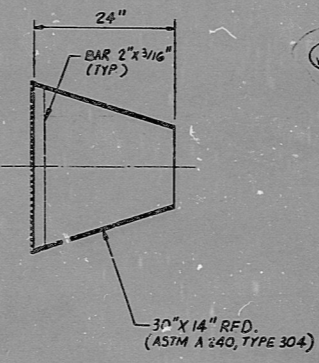
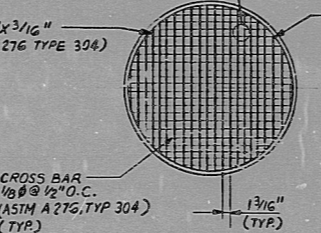
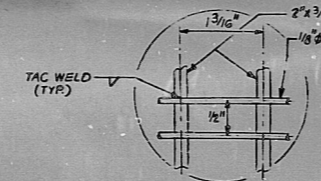
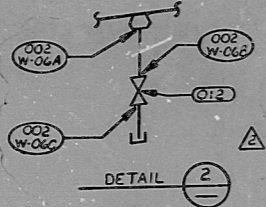
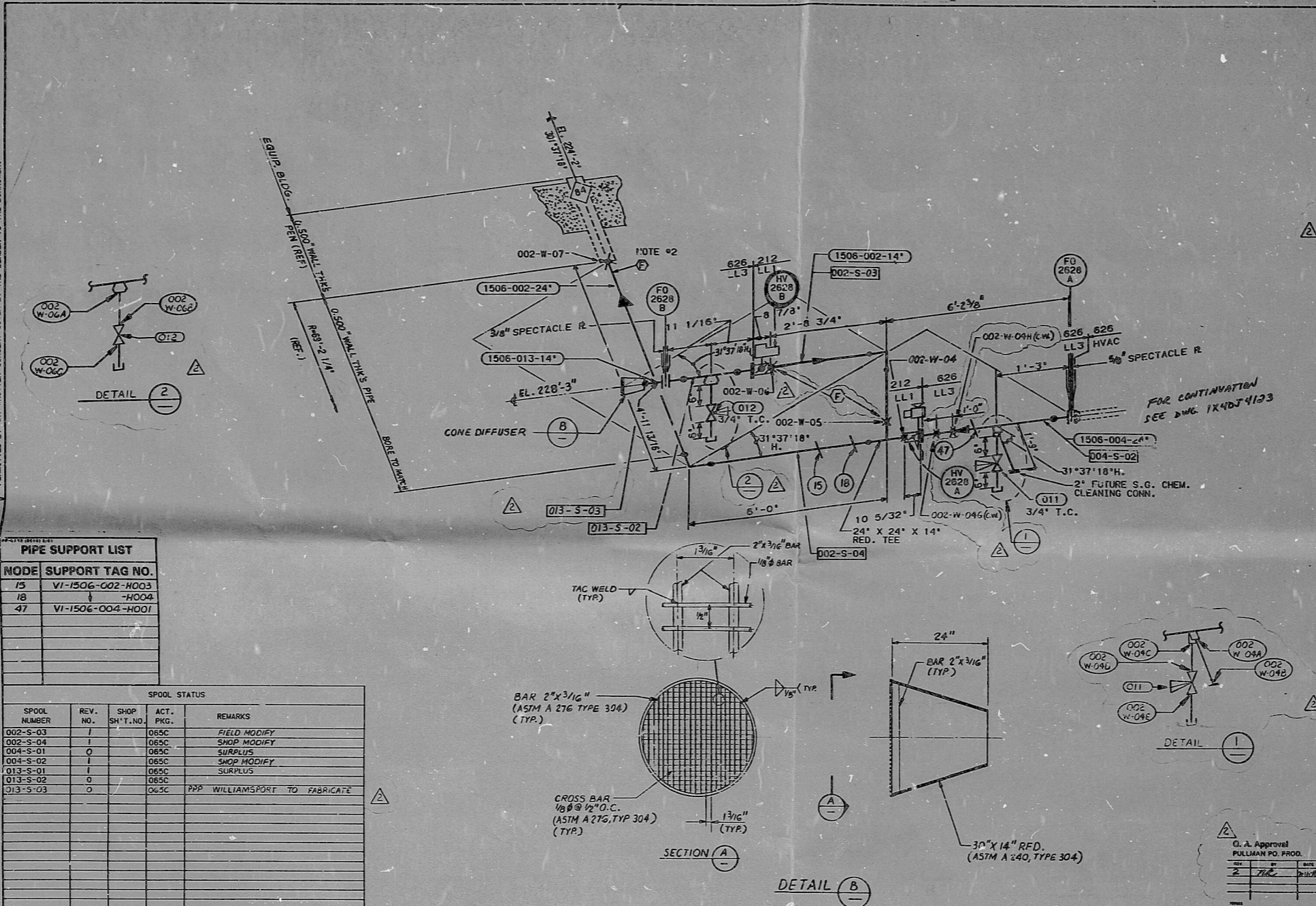
1. VERIFY THAT THE NAME CONTAINED ON THIS DRAWING IS THE CORRECT AND ORIGINAL DESIGNATION OF THE PROJECT. ANY CHANGES TO THE PROJECT NAME SHALL BE SUBMITTED TO THE PROJECT MANAGER.
 2. VERIFY THAT THE NAME CONTAINED ON THIS DRAWING IS THE CORRECT AND ORIGINAL DESIGNATION OF THE PROJECT. ANY CHANGES TO THE PROJECT NAME SHALL BE SUBMITTED TO THE PROJECT MANAGER.
 3. VERIFY THAT THE NAME CONTAINED ON THIS DRAWING IS THE CORRECT AND ORIGINAL DESIGNATION OF THE PROJECT. ANY CHANGES TO THE PROJECT NAME SHALL BE SUBMITTED TO THE PROJECT MANAGER.

THIS DRAWING AND THE DESIGN IT COVERS ARE PROPERTY OF BECHTEL. THEY ARE TO BE REPRODUCED, COPIED, LOANED, EXHIBITED, OR USED EXCEPT IN THE PRIVATE USE PERMITTED BY ANY WRITTEN CONSENT GIVEN BY THE BARROWER.

MODE	SUPPORT TAG NO.
75	VI-1506-002-H003
78	-H004
47	VI-1506-004-H001

SPOOL STATUS				
SPOOL NUMBER	REV. NO.	SHOP SH'T. NO.	ACT. PKG.	REMARKS
002-S-03	1		065C	FIELD MODIFY
002-S-04	1		065C	SHOP MODIFY
004-S-01	0		065C	SURPLUS
004-S-02	0		065C	SHOP MODIFY
013-S-01	1		065C	SURPLUS
013-S-02	0		065C	
013-S-03	0		065C	PPP WILLIAMSPORT TO FABRICATE

LINE NUMBER	PROJ. CLASS	PIPING CLASS	PIPING AREA	REFERENCE DRAWINGS	STRESS CALC. NO.	PHD REFERENCE DWGS NO.	REVISIONS
1506-004-24		626	LL3				
1506-013-14		626	LL3				
1506-002-14		212	LL1	1X2048F114			
1506-002-24		212	LL1	1X40L402			
				1X2048F112			
				1X40L402			



ACTIVITY PACKAGE NUMBER	JOB-SITE DELIVERY DATE	COATING NONE
4-1-2101-1-085C		

NOTE:
 1. FOR GENERAL NOTES SEE DWG. AX40R001
 2. (D) INDICATES 4" MIN. EXTRA STOCK W.P.E. FOR FIELD FIT-UP.
 3. THIS DRAWING IS GOVERNED BY PROCEDURE 1K-44 CLOSURE SYSTEMS.
 4. CLEAN ASSEMBLY PER CLASS "B" REQUIREMENTS.

Installation Note
 1. SPEC. - 02A
 2. SPEC. - LLL-212
 3. SPEC. - 001-020
 4. SPEC. - 001-020
 5. SPEC. - 001-020
 6. SPEC. - 001-020
 7. SPEC. - 001-020
 8. SPEC. - 001-020
 9. SPEC. - 001-020
 10. SPEC. - 001-020

Installation Note
 1. SPEC. - 02A
 2. SPEC. - LLL-212
 3. SPEC. - 001-020
 4. SPEC. - 001-020
 5. SPEC. - 001-020
 6. SPEC. - 001-020
 7. SPEC. - 001-020
 8. SPEC. - 001-020
 9. SPEC. - 001-020
 10. SPEC. - 001-020

THE DIMENSIONS SHOWN FOR 2 INCHES AND SMALLER GATE GLOBE AND CHECK VALVES ARE FOR DRESSER VALVES. IF OTHER VENDOR VALVES ARE USED, THE DIMENSIONS SHALL BE CHANGED TO IDENTIFY THE ACTUAL DIMENSION.

BECHTEL
 LOS ANGELES
 GEORGIA POWER COMPANY
 ALVIN W. VOGTLE NUCLEAR PLANT
 CTB NORM. PROCESS PURGE SUPPLY SYSTEM
 FABRICATION ISOMETRIC
 CMT. BLDG. AREA 4C LEVEL 1

SCALE: N.T.S.	DRAWING NO.	REV
	1K4-1506-002-02	2

24X

8605130298

TI APERTURE CARD

PDR RIDS

8605130298

