

FLOOR LEVEL	TURBINE BLDG. EL.	REACTOR BLDG. EL.	INSTRUMENT OPERATOR BLDG. EL.	DIESEL GENERATOR BLDG. EL.	RYNELL REACTOR BLDG. EL.	CONTROL BLDG. EL.
1	852'-0"	825'-0"	848'-0"	850'-0"	804'-0"	878'-0"
2	878'-0"	878'-0"	880'-0"	877'-0"	704'-0"	878'-0"
3	899'-0"	883'-0"	876'-0"	711'-0"	718'-1"	899'-0"
4	729'-0"	718'-1"	891'-8"		730'-11 1/2"	714'-0"
5	763'-0"	748'-1"			752'-3 1/2"	725'-0"
6	714'-0"	728'-1"			728'-1"	741'-0"
7		818'-1"				754'-0"
12					781'-1"	771'-0"
14					608'-0"	783'-0"
18					789'-1"	808'-0"

NOTES:  
 1. FOR LEGEND SEE DRAWING A-205790 SHEET 1.  
 2. WORK THIS DRAWING WITH C-205791 SHEETS 8 & 9.

V-29-4	E-108454 SH. 4
V-29-5A	E-108454 SH. 5A
V-29-17	E-108454 SH. 17
V-29-18	E-108454 SH. 18
V-25-9	E-108450 SH. 9

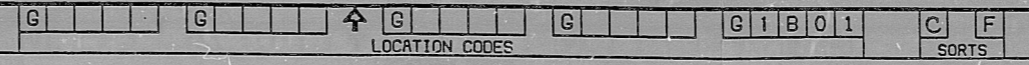
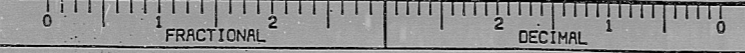
AE DRAWING NO.	PPAL DRAWING NO.

REV	DESCRIPTION	DR/CH	APPROVED DATE
0	INITIAL ISSUE		TAG 4-3-94

NON-QUALITY RELATED  
 SUSQUEHANNA S.E.S.  
 UNIT I  
 APPENDIX "R"  
 DEVIATION REQUEST NO. 12  
 PENETRATION X-29-5 54

AREA 29	ELEV. 719'-1"	SCALE	NA
PENNSYLVANIA POWER & LIGHT COMPANY ALLENTOWN PA.			
PPAL DRAWING NO.	SHEET NO.	REV. NO.	
C-205791	8B		
AE DRAWING NO.	C-1696 SH. 8B		0

PPAL FORM 5050C (1/84)



TI  
 APERTURE  
 CARD

PDR RIDS

8604250140

