

REVIEWED TO: H-544-2674 & 35715

SPECIAL NOTES:
 1. ALL AS-BUILT DATA WILL BE SHOWN IN A BOX D. ALL DIMENSIONS ALONG THE LONGITUDINAL AXIS OF THE PIPE LINE WHICH ARE NOT BORED, INDICATE THAT A COMPONENT WAS NOT INSTALLED AT THE TIME OF THE AS-BUILT.
 2. DELETE: [unclear]
 3. DELETE: [unclear]

DESCRIPTION	DATE	BY
DESIGNED BY HUNTER CORP.		
REWORKED BY HUNTER CORP.		
REVISIONS		
1. [unclear]		
2. [unclear]		
3. [unclear]		
4. [unclear]		
5. [unclear]		
6. [unclear]		
7. [unclear]		
8. [unclear]		
9. [unclear]		
10. [unclear]		
11. [unclear]		
12. [unclear]		
13. [unclear]		
14. [unclear]		
15. [unclear]		
16. [unclear]		
17. [unclear]		
18. [unclear]		
19. [unclear]		
20. [unclear]		

ORIGINAL

N-S CODE NO	SECTION XI
1-SX-1-N5	
1-SX-1-N5	
1-SX-1-N5	
1-SX-1-N5	
1-SX-1-N5	
1-SX-1-N5	
1-SX-1-N5	
1-SX-1-N5	
1-SX-1-N5	
1-SX-1-N5	

N-S CODE NO	SECTION XI
1-SX-1-N5	

(FOR Q-2 ONLY)

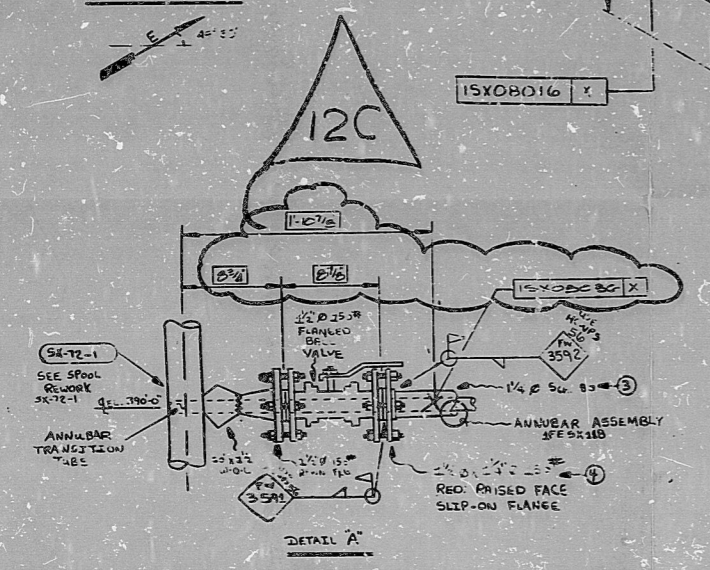
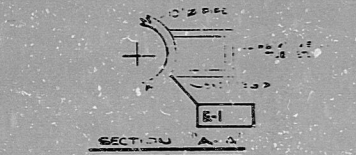
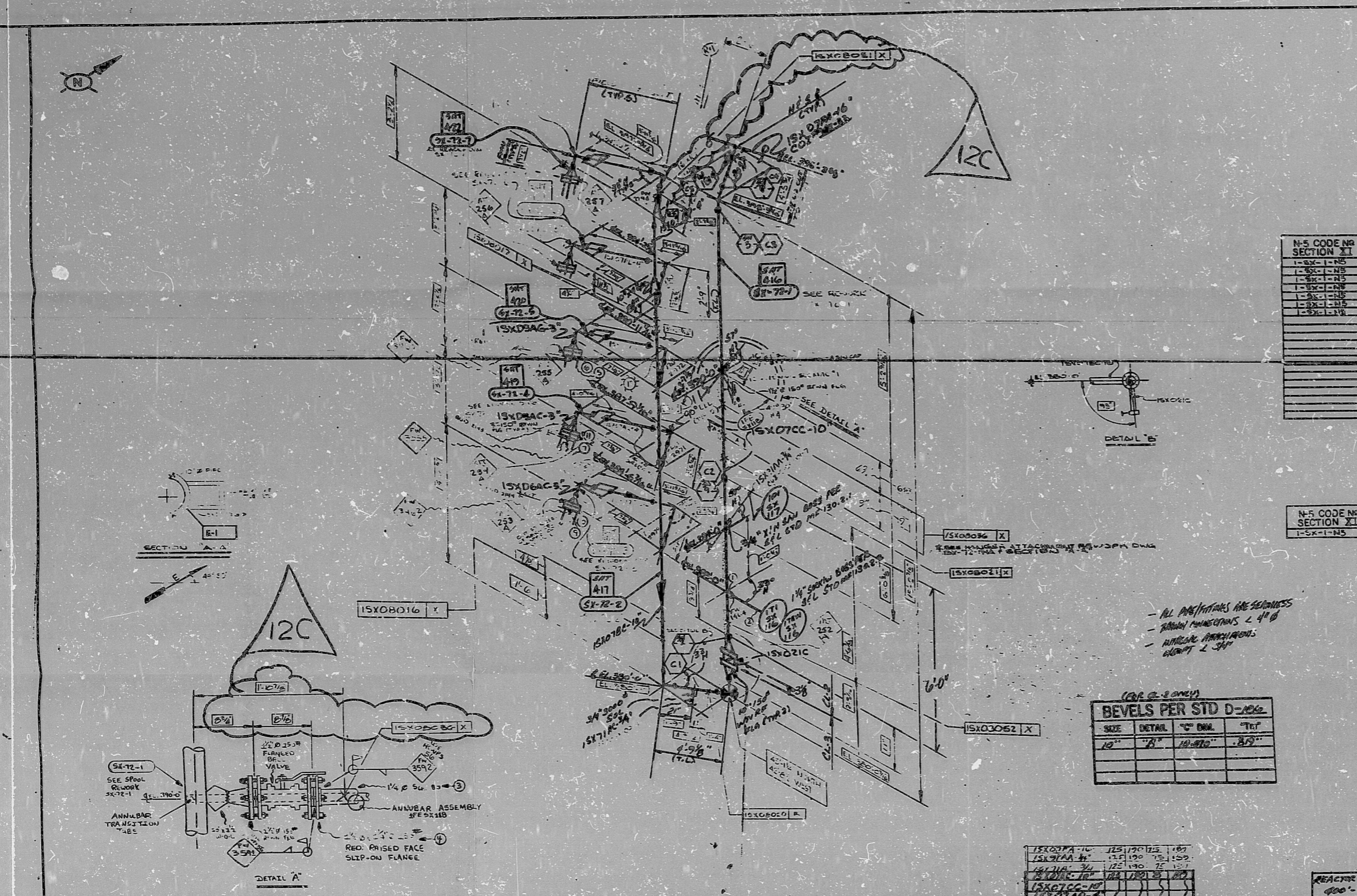
SIZE	DETAIL	"O" DIA.	"T" T
10"	"B"	10.000"	.875"

ANSTEC APERTURE CARD

REV	DATE	BY	DESCRIPTION	DATE	BY
1			DESIGN ENG DRWG REF. H-544-SM-34, 35		
2			REVISION TO CORRECT TO DESIGN OF ANNUBAR AND VALVE		
3			REVISION TO CORRECT TO DESIGN OF ANNUBAR AND VALVE		
4			REVISION TO CORRECT TO DESIGN OF ANNUBAR AND VALVE		
5			REVISION TO CORRECT TO DESIGN OF ANNUBAR AND VALVE		
6			REVISION TO CORRECT TO DESIGN OF ANNUBAR AND VALVE		
7			REVISION TO CORRECT TO DESIGN OF ANNUBAR AND VALVE		
8			REVISION TO CORRECT TO DESIGN OF ANNUBAR AND VALVE		
9			REVISION TO CORRECT TO DESIGN OF ANNUBAR AND VALVE		
10			REVISION TO CORRECT TO DESIGN OF ANNUBAR AND VALVE		
11			REVISION TO CORRECT TO DESIGN OF ANNUBAR AND VALVE		
12			REVISION TO CORRECT TO DESIGN OF ANNUBAR AND VALVE		
13			REVISION TO CORRECT TO DESIGN OF ANNUBAR AND VALVE		
14			REVISION TO CORRECT TO DESIGN OF ANNUBAR AND VALVE		
15			REVISION TO CORRECT TO DESIGN OF ANNUBAR AND VALVE		
16			REVISION TO CORRECT TO DESIGN OF ANNUBAR AND VALVE		
17			REVISION TO CORRECT TO DESIGN OF ANNUBAR AND VALVE		
18			REVISION TO CORRECT TO DESIGN OF ANNUBAR AND VALVE		
19			REVISION TO CORRECT TO DESIGN OF ANNUBAR AND VALVE		
20			REVISION TO CORRECT TO DESIGN OF ANNUBAR AND VALVE		

BYRON STATION
 BYRON, ILLINOIS
 HUNTER CORP
 ISO SPOOL
 NO. SX-72

N5
 SEC XI



NO.	QTY	DESCRIPTION	UNIT	REMARKS
1	1	ANNUBAR ASSEMBLY	EA	
2	1	VALVE	EA	
3	1	ANNUBAR ASSEMBLY	EA	
4	1	VALVE	EA	
5	1	ANNUBAR ASSEMBLY	EA	
6	1	VALVE	EA	
7	1	ANNUBAR ASSEMBLY	EA	
8	1	VALVE	EA	
9	1	ANNUBAR ASSEMBLY	EA	
10	1	VALVE	EA	
11	1	ANNUBAR ASSEMBLY	EA	
12	1	VALVE	EA	
13	1	ANNUBAR ASSEMBLY	EA	
14	1	VALVE	EA	
15	1	ANNUBAR ASSEMBLY	EA	
16	1	VALVE	EA	
17	1	ANNUBAR ASSEMBLY	EA	
18	1	VALVE	EA	
19	1	ANNUBAR ASSEMBLY	EA	
20	1	VALVE	EA	

NO.	QTY	DESCRIPTION	UNIT	REMARKS
1	1	ANNUBAR ASSEMBLY	EA	
2	1	VALVE	EA	
3	1	ANNUBAR ASSEMBLY	EA	
4	1	VALVE	EA	
5	1	ANNUBAR ASSEMBLY	EA	
6	1	VALVE	EA	
7	1	ANNUBAR ASSEMBLY	EA	
8	1	VALVE	EA	
9	1	ANNUBAR ASSEMBLY	EA	
10	1	VALVE	EA	
11	1	ANNUBAR ASSEMBLY	EA	
12	1	VALVE	EA	
13	1	ANNUBAR ASSEMBLY	EA	
14	1	VALVE	EA	
15	1	ANNUBAR ASSEMBLY	EA	
16	1	VALVE	EA	
17	1	ANNUBAR ASSEMBLY	EA	
18	1	VALVE	EA	
19	1	ANNUBAR ASSEMBLY	EA	
20	1	VALVE	EA	

ASME SECTION 19-2 W/ASME 19-2
 SUMMER 1975 CLASS (CODE SYL)
 SHOP NOTES:
 PRINTS (ORGANIC) CUT AND LEAD
 PHOTOS COPY MUST BE FOR 20-20-60
 INSPECTION AND VISUAL COMPARISON

SOUTHWEST FABRICATING
 & WELDING CO., INC.
 19350
 19350

PDR RIDS

96040100 38

