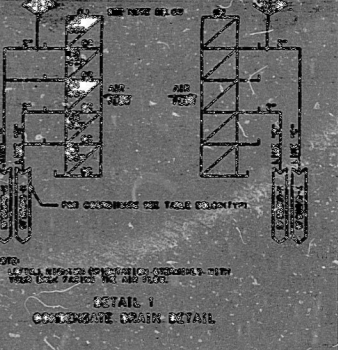


NO.	DESCRIPTION	REVISION
1	AS SHOWN	AS SHOWN
2	AS SHOWN	AS SHOWN
3	AS SHOWN	AS SHOWN
4	AS SHOWN	AS SHOWN
5	AS SHOWN	AS SHOWN
6	AS SHOWN	AS SHOWN
7	AS SHOWN	AS SHOWN
8	AS SHOWN	AS SHOWN
9	AS SHOWN	AS SHOWN
10	AS SHOWN	AS SHOWN
11	AS SHOWN	AS SHOWN
12	AS SHOWN	AS SHOWN
13	AS SHOWN	AS SHOWN
14	AS SHOWN	AS SHOWN
15	AS SHOWN	AS SHOWN
16	AS SHOWN	AS SHOWN
17	AS SHOWN	AS SHOWN
18	AS SHOWN	AS SHOWN
19	AS SHOWN	AS SHOWN
20	AS SHOWN	AS SHOWN

1. CHECK ALL CONNECTIONS AND WIRING.
2. CHECK ALL COMPONENTS AND PARTS.
3. CHECK ALL LABELS AND MARKINGS.
4. CHECK ALL DIMENSIONS AND SPACINGS.
5. CHECK ALL MATERIALS AND FINISHES.
6. CHECK ALL SAFETY AND PROTECTIVE DEVICES.
7. CHECK ALL OPERATING PROCEDURES.
8. CHECK ALL MAINTENANCE PROCEDURES.
9. CHECK ALL RECORDS AND DOCUMENTATION.
10. CHECK ALL COMMUNICATIONS AND SIGNALS.



NO.	DESCRIPTION	REVISION
1	AS SHOWN	AS SHOWN
2	AS SHOWN	AS SHOWN
3	AS SHOWN	AS SHOWN
4	AS SHOWN	AS SHOWN
5	AS SHOWN	AS SHOWN
6	AS SHOWN	AS SHOWN
7	AS SHOWN	AS SHOWN
8	AS SHOWN	AS SHOWN
9	AS SHOWN	AS SHOWN
10	AS SHOWN	AS SHOWN

**ARSTED
APERTURE
CARD**

NO.	DESCRIPTION	REVISION	DATE	BY	CHKD	APP'D	REVISED
1	AS SHOWN	AS SHOWN					
2	AS SHOWN	AS SHOWN					
3	AS SHOWN	AS SHOWN					
4	AS SHOWN	AS SHOWN					
5	AS SHOWN	AS SHOWN					
6	AS SHOWN	AS SHOWN					
7	AS SHOWN	AS SHOWN					
8	AS SHOWN	AS SHOWN					
9	AS SHOWN	AS SHOWN					
10	AS SHOWN	AS SHOWN					

HOUSTON LIGHTING & POWER COMPANY
HOUSTON, TEXAS

FORM NO. INSTRUMENTATION DIAGRAM
MAY 1964 EDITION
FOR CLIENTS USE ONLY

5V1491-001.002 05/22/1997 10

30:1

9710060154

PDR RIDS

9710060154

