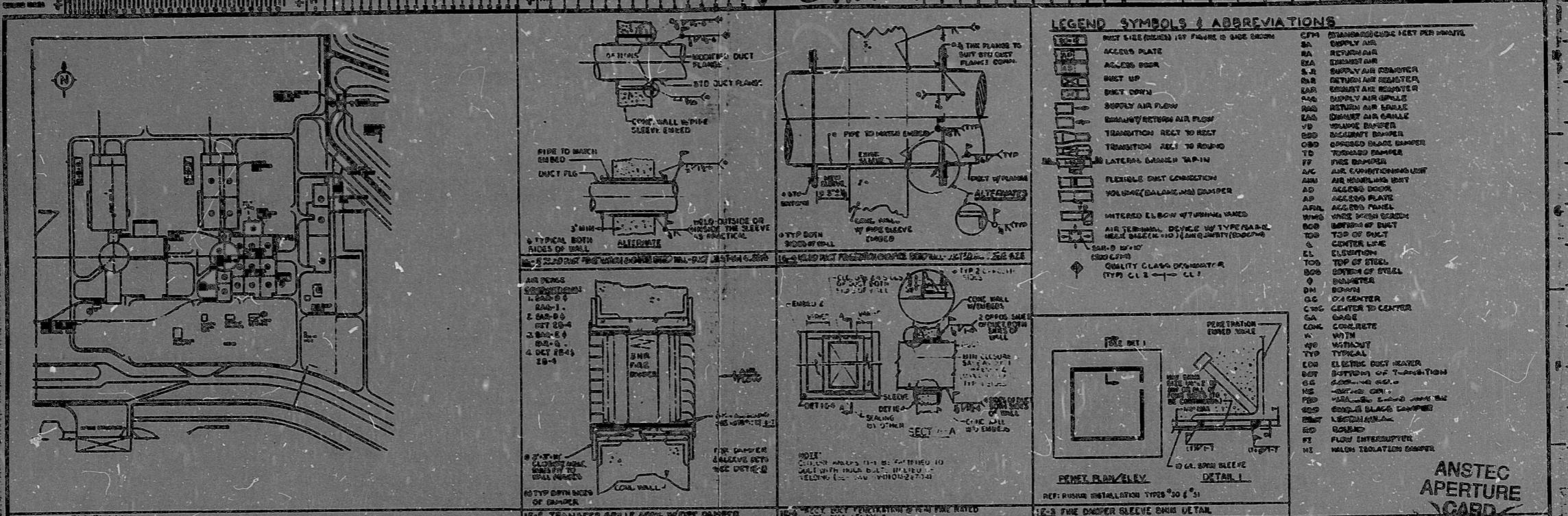


01-0018 Sh.1

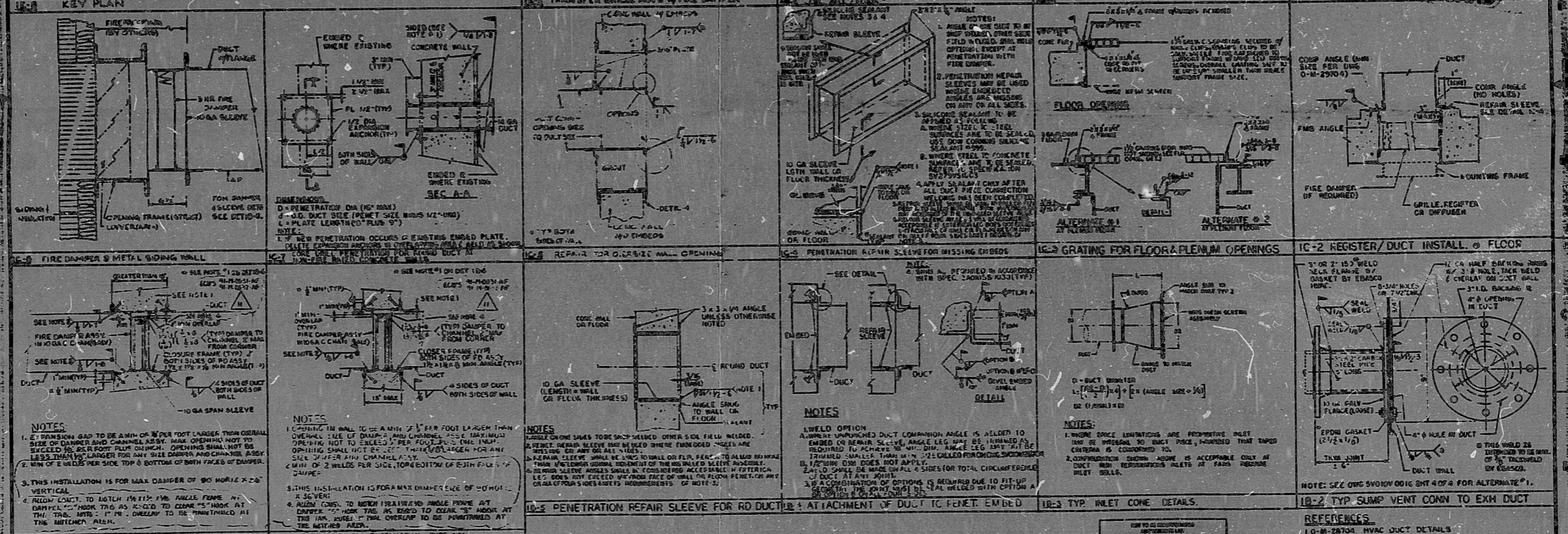


LEGEND SYMBOLS & ABBREVIATIONS

11-1	DUCT SLEEVE (SIZES 10" THROUGH 30" DIA)	11-2	DUCT SLEEVE (SIZES 10" THROUGH 30" DIA)
11-3	ACCESS PLATE	11-4	ACCESS PLATE
11-5	ACCESS DOOR	11-6	ACCESS DOOR
11-7	DUCT UP	11-8	DUCT UP
11-9	SUPPLY AIR FLOW	11-10	SUPPLY AIR FLOW
11-11	RETURN AIR FLOW	11-12	RETURN AIR FLOW
11-13	TRANSITION REL. TO ROUNDED	11-14	TRANSITION REL. TO ROUNDED
11-15	LATERAL CHANGE TAP IN	11-16	LATERAL CHANGE TAP IN
11-17	FLEXIBLE DUCT CONNECTION	11-18	FLEXIBLE DUCT CONNECTION
11-19	VOLUME (BALANCE) DAMPER	11-20	VOLUME (BALANCE) DAMPER
11-21	INTERED ELBOW (W/SHIMMED GASKETS)	11-22	INTERED ELBOW (W/SHIMMED GASKETS)
11-23	ALL TERMINAL DEVICE W/TYPE PLATE	11-24	ALL TERMINAL DEVICE W/TYPE PLATE
11-25	QUALITY CLASS OF DAMPER	11-26	QUALITY CLASS OF DAMPER
11-27	QUALITY CLASS OF DAMPER	11-28	QUALITY CLASS OF DAMPER
11-29	QUALITY CLASS OF DAMPER	11-30	QUALITY CLASS OF DAMPER

ANSTEC APERTURE CARD

REF: PUNISH INSTALLATION TYPE "00" & "01"



NOTES

1. TRANSITION GAP TO BE MIN OF 1/8" PER FOOT LARGER THAN ORIGINAL SIZE OF DAMPER AND CHANNEL. ALL DAMPERS SHALL NOT BE REUSED IN ROOF FOOT PLUM CLIMB. OPENINGS SHALL NOT BE LESS THAN 1/8" LARGER FOR ANY WALL DAMPERS AND CHANNELS. ALL DAMPERS SHALL BE 1/8" OVER SIZE TOP & BOTTOM OF BOTH SIDES OF DAMPER.

2. MIN OF 1/8" OVER SIZE TOP & BOTTOM OF BOTH SIDES OF DAMPER.

3. THIS INSTALLATION IS FOR MAX DAMPER OF 90" HOLE X 24" VERTICAL.

4. ALLOW GUT TO HOLD 1/8" MIN ANGLE FROM AT DAMPER. MAKE THIS AS ACCORD TO DRAWING. MAKE AT THE DAMPER. MAKE THIS AS ACCORD TO DRAWING. MAKE AT THE DAMPER.

11-23 FIRE DAMPER & METAL SIDING WALL

11-24 FIRE DAMPER & METAL SIDING WALL

11-25 FIRE DAMPER & METAL SIDING WALL

11-26 FIRE DAMPER & METAL SIDING WALL

11-27 FIRE DAMPER & METAL SIDING WALL

11-28 FIRE DAMPER & METAL SIDING WALL

11-29 FIRE DAMPER & METAL SIDING WALL

11-30 FIRE DAMPER & METAL SIDING WALL

11-31 FIRE DAMPER & METAL SIDING WALL

11-32 FIRE DAMPER & METAL SIDING WALL

11-33 FIRE DAMPER & METAL SIDING WALL

11-34 FIRE DAMPER & METAL SIDING WALL

11-35 FIRE DAMPER & METAL SIDING WALL

11-36 FIRE DAMPER & METAL SIDING WALL

11-37 FIRE DAMPER & METAL SIDING WALL

11-38 FIRE DAMPER & METAL SIDING WALL

11-39 FIRE DAMPER & METAL SIDING WALL

11-40 FIRE DAMPER & METAL SIDING WALL

11-41 FIRE DAMPER & METAL SIDING WALL

11-42 FIRE DAMPER & METAL SIDING WALL

11-43 FIRE DAMPER & METAL SIDING WALL

11-44 FIRE DAMPER & METAL SIDING WALL

11-45 FIRE DAMPER & METAL SIDING WALL

11-46 FIRE DAMPER & METAL SIDING WALL

11-47 FIRE DAMPER & METAL SIDING WALL

11-48 FIRE DAMPER & METAL SIDING WALL

11-49 FIRE DAMPER & METAL SIDING WALL

11-50 FIRE DAMPER & METAL SIDING WALL

11-51 FIRE DAMPER & METAL SIDING WALL

11-52 FIRE DAMPER & METAL SIDING WALL

11-53 FIRE DAMPER & METAL SIDING WALL

11-54 FIRE DAMPER & METAL SIDING WALL

11-55 FIRE DAMPER & METAL SIDING WALL

11-56 FIRE DAMPER & METAL SIDING WALL

11-57 FIRE DAMPER & METAL SIDING WALL

11-58 FIRE DAMPER & METAL SIDING WALL

11-59 FIRE DAMPER & METAL SIDING WALL

11-60 FIRE DAMPER & METAL SIDING WALL

11-61 FIRE DAMPER & METAL SIDING WALL

11-62 FIRE DAMPER & METAL SIDING WALL

11-63 FIRE DAMPER & METAL SIDING WALL

11-64 FIRE DAMPER & METAL SIDING WALL

11-65 FIRE DAMPER & METAL SIDING WALL

11-66 FIRE DAMPER & METAL SIDING WALL

11-67 FIRE DAMPER & METAL SIDING WALL

11-68 FIRE DAMPER & METAL SIDING WALL

11-69 FIRE DAMPER & METAL SIDING WALL

11-70 FIRE DAMPER & METAL SIDING WALL

11-71 FIRE DAMPER & METAL SIDING WALL

11-72 FIRE DAMPER & METAL SIDING WALL

11-73 FIRE DAMPER & METAL SIDING WALL

11-74 FIRE DAMPER & METAL SIDING WALL

11-75 FIRE DAMPER & METAL SIDING WALL

11-76 FIRE DAMPER & METAL SIDING WALL

11-77 FIRE DAMPER & METAL SIDING WALL

11-78 FIRE DAMPER & METAL SIDING WALL

11-79 FIRE DAMPER & METAL SIDING WALL

11-80 FIRE DAMPER & METAL SIDING WALL

11-81 FIRE DAMPER & METAL SIDING WALL

11-82 FIRE DAMPER & METAL SIDING WALL

11-83 FIRE DAMPER & METAL SIDING WALL

11-84 FIRE DAMPER & METAL SIDING WALL

11-85 FIRE DAMPER & METAL SIDING WALL

11-86 FIRE DAMPER & METAL SIDING WALL

11-87 FIRE DAMPER & METAL SIDING WALL

11-88 FIRE DAMPER & METAL SIDING WALL

11-89 FIRE DAMPER & METAL SIDING WALL

11-90 FIRE DAMPER & METAL SIDING WALL

11-91 FIRE DAMPER & METAL SIDING WALL

11-92 FIRE DAMPER & METAL SIDING WALL

11-93 FIRE DAMPER & METAL SIDING WALL

11-94 FIRE DAMPER & METAL SIDING WALL

11-95 FIRE DAMPER & METAL SIDING WALL

11-96 FIRE DAMPER & METAL SIDING WALL

11-97 FIRE DAMPER & METAL SIDING WALL

11-98 FIRE DAMPER & METAL SIDING WALL

11-99 FIRE DAMPER & METAL SIDING WALL

11-100 FIRE DAMPER & METAL SIDING WALL

REVISIONS

NO.	DESCRIPTION	DATE
1	ISSUED FOR CONSTRUCTION	09/22/1997
2	REVISED FOR CONSTRUCTION	09/22/1997
3	REVISED FOR CONSTRUCTION	09/22/1997
4	REVISED FOR CONSTRUCTION	09/22/1997
5	REVISED FOR CONSTRUCTION	09/22/1997
6	REVISED FOR CONSTRUCTION	09/22/1997
7	REVISED FOR CONSTRUCTION	09/22/1997
8	REVISED FOR CONSTRUCTION	09/22/1997
9	REVISED FOR CONSTRUCTION	09/22/1997
10	REVISED FOR CONSTRUCTION	09/22/1997

BECHTEL ENERGY CORPORATION

5V010V00016

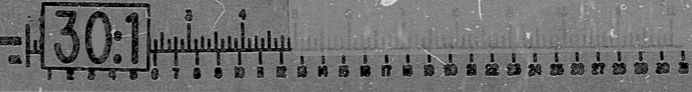
09/22/1997

1 11

HVAC DETAILS, LEGEND & SYMBOLS

SHEET 1 OF 5

14828 5-V-01-0-V-0016



9710060109

PDR RIDS

9710060109

