

**NOTES**  
 1. FOR GENERAL NOTES SEE OMS NO. 10000.  
 2. EVENTS AND GARDING LOGS: EACH COOLING COIL LINE TO BE VALVED UP WITH CONNECTION FOR MODULE DIFFERENTIAL PLANT MANAGEMENT.

**REFERENCE DWGS**  
 L. 1100002 P&ID P&ID MAC - SUPPLY SYSTEM P&ID.

**ANSTEC APERTURE CARD**

3V119V1000481 09/22/1997  
 9

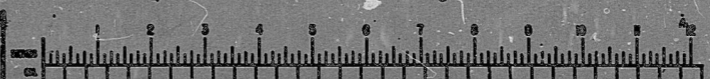
COMPONENT LOCATION FUEL HANDLING BUILDING

NO.	ISSUE DATE	ISSUED FOR	BY	CHKD	REV	DATE	REASON
1	12-18-92	ISSUED FOR CONSTRUCTION	...	...	...	...	...

**HOUSTON LIGHTING & POWER COMPANY**  
 SOUTH TEXAS PROJECT ELECTRIC OPERATING STATION

PIPING & INSTRUMENTATION DIAGRAM - HVAC ESSENTIAL CHILLED WATER SYSTEM  
 DRAWING NO. 3V119V1000481 \*1

30:1



9710030226

PDR RIDS

9710030226

