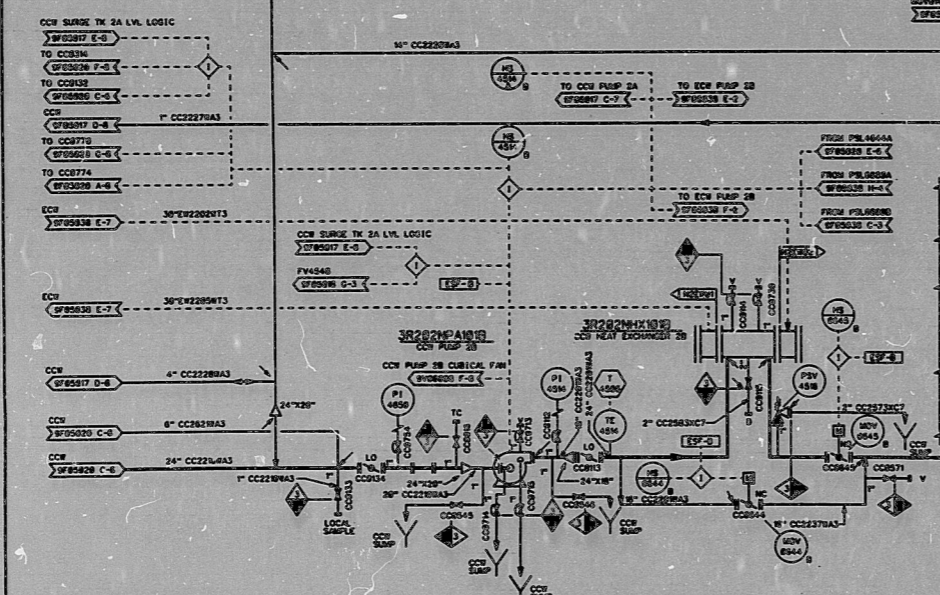


- NOTES:**
1. LOCATED TO BE ON THE BOTTOM
 2. SOLIDIFIED
 3. LOCATE VALVES AS CLOSE TO INSTRUMENT AS POSSIBLE
 4. FOR REFRIG. VALVES, INSTRUMENTS, CONTROL, ETC. LOCATE IN THE INSTRUMENT IDENTIFICATION NUMBER OF VALVE
 5. ALL INSTRUMENTS ON THIS P&ID ARE INSTRUMENTS THAT HAVE BEEN ORDERED OR NOTED
 6. ALL INSTRUMENTS ON THIS P&ID ARE INSTRUMENTS THAT HAVE BEEN ORDERED OR NOTED
 7. SWITCH LOCATED IN THE P&ID NOTE
 8. SYSTEM DESIGNATOR IS 5R209F0501B#2

- REFERENCES:**
1. FOR REFRIG. INSTRUMENT SYMBOLS SEE DRAWING: 5R209F0501B#2



NO.	DATE	REVISION	BY	CHK	REV	DATE	DESCRIPTION
16	8-23-93	INCORP. DCH NO-2977					
15	8-3-92	INCORP. DCH NO-2929					
14	7-24-91	INCORP. DCH NO-2912					
13	7-23-91	INCORP. DCH NO-2895					
12	1-5-91	PL&P ASSURES DESIGN CHANGE CONTROL & INCORP. DCH NO-2857					
11	1-23-91	ISSUED FOR CONSTRUCTION					

HOUSTON LIGHTING & POWER COMPANY

PIPING AND INSTRUMENTATION DIAGRAM
COMPONENT COOLING WATER SYSTEM

SCALE	ORIG. NO.	REV.
NONE	5R209F0501B#2	18

09/22/1997

5R209F0501B#2

18

ECN NO. 5R209F0501B#2
DC NO. 0879928
FJAS-3-181

30:1

9710030030

PDR RIDS

97100B0030

