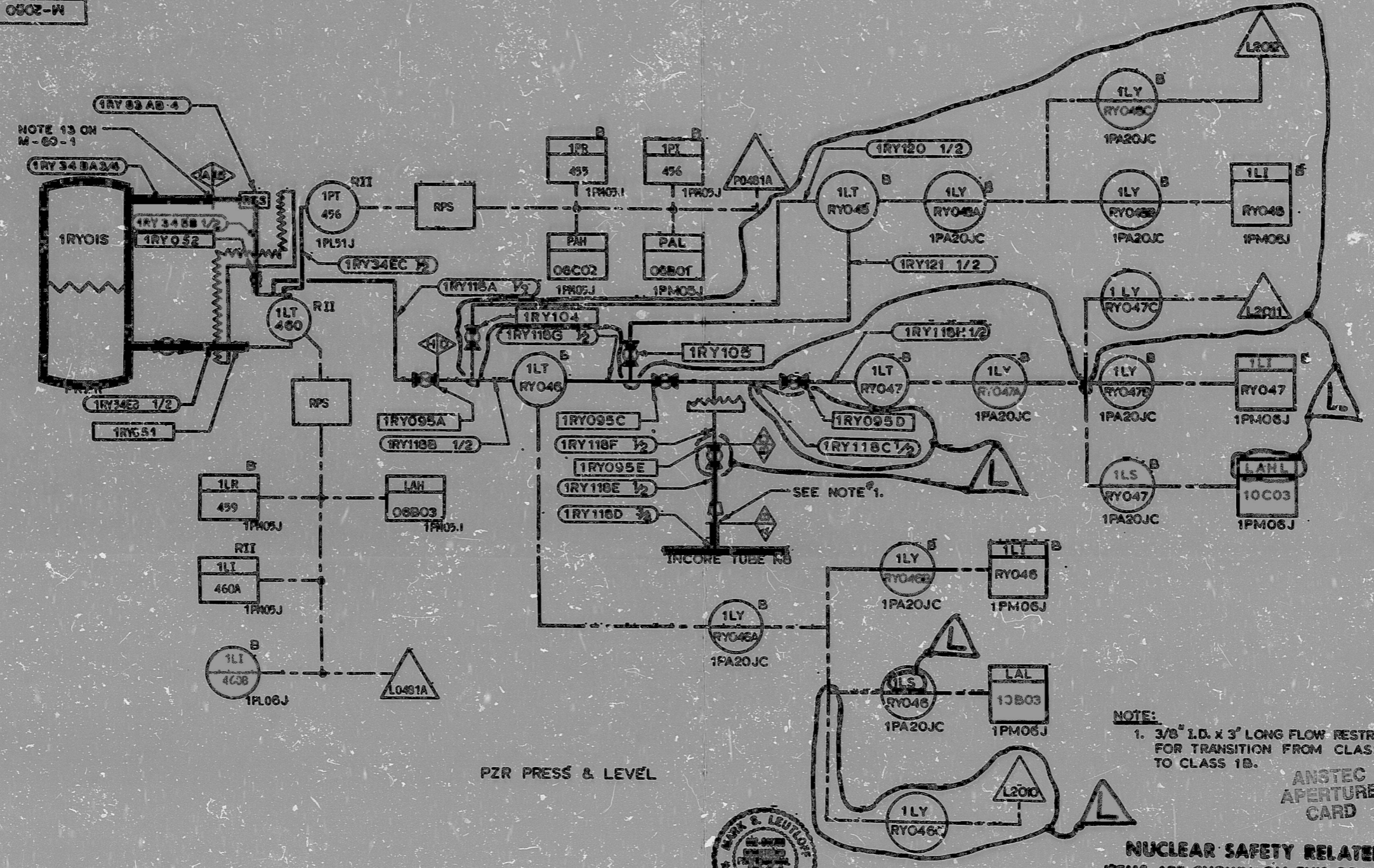


SHEET 7 OF 8
M-2060
0502-W



PZR PRESS & LEVEL



NOTE:
1. 3/8" I.D. x 3" LONG FLOW RESTRICTOR
FOR TRANSITION FROM CLASS 1A
TO CLASS 1B.

ANSTEC
APERTURE
CARD

NUCLEAR SAFETY RELATED
ITEMS ARE SHOWN ON THIS DRAWING
(FOR SAFETY CLASSIFICATION SEE PIPING,
EQUIPMENT, VALVE, OR INSTRUMENT LISTS.)

| DRAWING RELEASE RECORD | | | | | |
|------------------------|----------|---------------|---------------|---------------|---|
| REV. | DATE | BY | CHKD. | APPROVAL | DESCRIPTION |
| L | 02/08/68 | J. G. LaValle | J. G. LaValle | J. G. LaValle | F-2739 FOR RECORD (DCR 488-422, PECP-1177-1 & MOD. M6-1-55-026) |
| K | 08-31-67 | J. G. LaValle | J. G. LaValle | J. G. LaValle | F-2739 FOR RECORD (CORRECTION TO DCR-87-284, PECP-1086-2, MOD. M6-1-55-018) |



| | |
|-------|---------|
| DATE | 2-27-74 |
| BY | NOISE |
| CHKD. | NOISE |
| DATE | 9-1-68 |
| BY | NOISE |
| CHKD. | NOISE |
| DATE | 9-1-68 |
| BY | NOISE |
| CHKD. | NOISE |
| DATE | 9-1-68 |

PROJECT NUMBER
4291
P&ID/C&I DIAGRAM
REACTOR COOLANT SYSTEM-RC
BYRON STATION
UNIT 1
COMMONWEALTH EDISON CO.
CHICAGO, ILLINOIS

| | |
|-------------|--------|
| DRAWING NO. | M-2060 |
| REV. | L |
| SHEET | 7 OF 8 |

MC

PDR RIDS

9603280018

