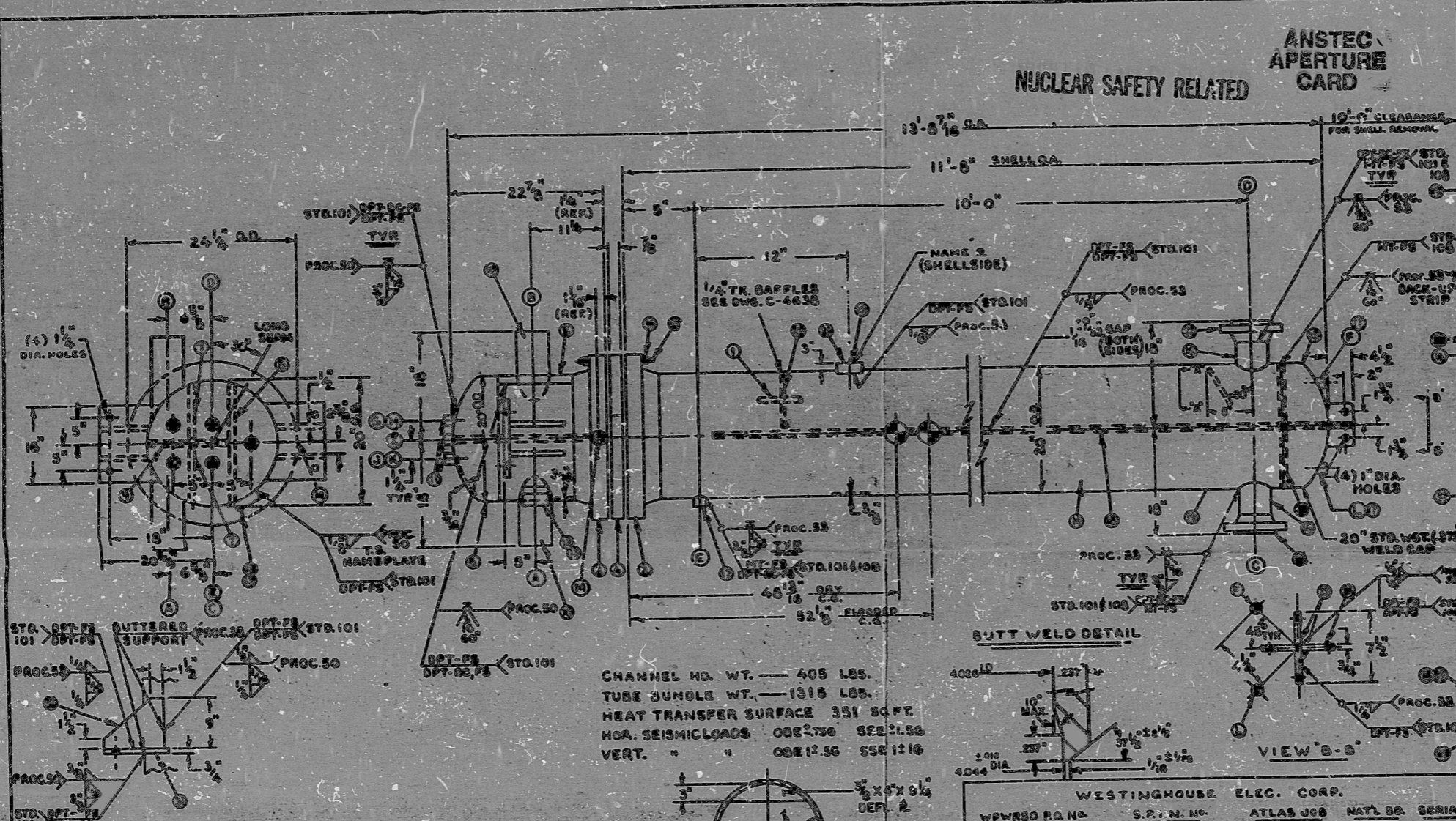
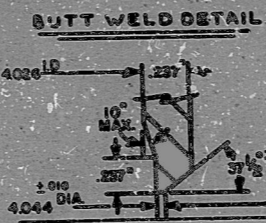


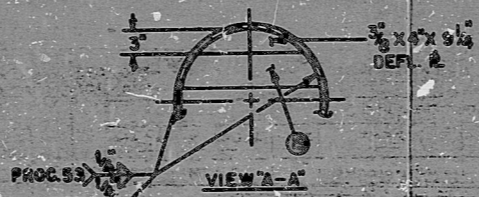
ANSTEC APERTURE CARD
NUCLEAR SAFETY RELATED



CHANNEL MD. WT. — 405 LBS.
TUBE BUNDLE WT. — 1315 LBS.
HEAT TRANSFER SURFACE 351 SQ. FT.
HQA. SEISMIC LOADS ODR 2.730 SSE 2.156
VERT. " " ODR 12.50 SSE 12.16



VIEW B-B



FOR INFORMATION ONLY

- NOTES**
- CONSTRUCTION:
 - A-FRAME, BOLTER AND PRESSURE VESSEL
 - COMP. SECTION III, 1974 ED. — INCL. WINTERS 1974 ADD. CLASS-3 SHELLS/PS CLASS-2 TUBESIDE
 - NAME PLATE SPECIFIC: 2 REQ'D 1-SHELLSIDE 1-TUBESIDE

ATLAS	
DATE OR SERIAL YEAR	
DATE	
TIME	
BY	
CHKD BY	

- TEST SPECIFIC: SHELL SIDE TUBE SIDE
DRY — 225 PSI 225 PSI
OVERPRESSURE ALLOWED: 1/8" 0 (CONSTRICTED)
- WEIGHTS: 2660 LBS.
POLY OF WATER: 4310 LBS.
- FORM ALL C/S SUPPACED W/ (1) COAT L.S.-2 WILD, DIM. TEGOATS H.S. SANDBLAST: P.A. 58PC-5PA-28
- TUBES SHALL BE SEAL WELDED AND EXPANDED I.A.W. ATLAS STD. 102-C. 2. RECESS NOT REQ'D
- CONSTRUCTION INSPECTION: REFER TO PARA 6.4 W-PRSD — EQUIP. SPEC. 6-71150 REV. 1 DATED 10-18-74
- TUBES TO BE 200% CURRENT TESTED PER NC-2351 & NC-8110 A.G.M.E. SEC. III 1974 ED. ALSO AN INTERGRANULAR CORROSION TEST IS REQ'D I.A.W. A-202
- LIQUID PENETRANT EXAMINATION: SHELL HEADS, FLANGES AND CRACKS REQ'D. AFTER FINAL TIGHTENING AND MACHINING BUT PRIOR TO TUBE MILE DRILLING I.A.W. ATLAS STD. 101.
- AIR TEST TUB. JOINTS @ 25 P.S.I. PRIOR TO HYDRO-TEST & EXPANDING TUBES I.A.W. ATLAS STD. 107.
- CLEAN AND PACKAGE PER STD. 102-B
- ONE SET SPARE GASKETS REQ'D. MARK: WESTINGHOUSE PROPERTY ERECTION SPARES.
- COAT STUDS WITH THERMOLAMINATING 112 FOLLOWED BY LUGLOX 4006.
- HYDRO TEST UNIT I.A.W. ATLAS STD. 111. WATER PURITY PER STD. 102-E
- ALL TOLERANCES PER TEMA-A

WESTINGHOUSE ELEC. CORP.			
WPWRSO P.O. NO.	S.P.N. NO.	ATLAS JOB	MATL. DR. SERIAL
546-CAI-241665-BM	DCP-CSAHSW	3349-1	2976 3620
" " -241666-"	SDP-"	3349-2	2977 3621

CONNECTIONS					
MARK	PURPOSE	SIZE	TYPE	THK.	REMARKS
A	INLET	4"	BUTT WELDS	.237"	
B	OUTLET	4"	BUTT WELDS	.237"	
C	OUTLET	4"	ISO R.F.W.H.	.237"	
D	INLET	4"	ISO R.F.W.H.	.237"	
E	DRAIN	3/4"	H.C.	3000 ⁰	3/4" N.R.T.
FL	VENT	3/4"	H.C.	"	3/4" N.R.T.
SNJ, K	DRAIN	3/4"	S.W.H.C.	"	SCHED. 80 SGR
M	VENT	3/4"	1 1/2" DIA. HOLE	"	SEE DETAIL DWG. C-4637

17. FOR ADDITIONAL DETAIL SEE DWG. C-4637 & C-4638

18. SEISMIC LUG IS CAPABLE OF WITHSTANDING WEIGHT OF ENTIRE DAY UNIT

CNH 1201 06-50

2	REV PER PARA NO 114	5-10-74	CO 1-12
1	REV ORIGINAL LUG PLATE TYP. 1	1-17-74	CO 1-12
1	REV ORIGINAL LUG PLATE TYP. 2	1-17-74	CO 1-12

ATLAS MANUFACTURING CO.
61 SHERMAN PLACE
CLIFTON, N.J.

20-114 ARU
SEAL WATER N.E.

STUDS: SA-193-GR37
NUTS: SA-194-GR24

GASKETS: SPECIAL LUGGING 34-306 SING. 406
RIBS 20-114-GR24

ITEM NO.	DESCRIPTION	QTY	UNIT	REMARKS
1
2
3

VERT.

PDR RIDS

9603180305

