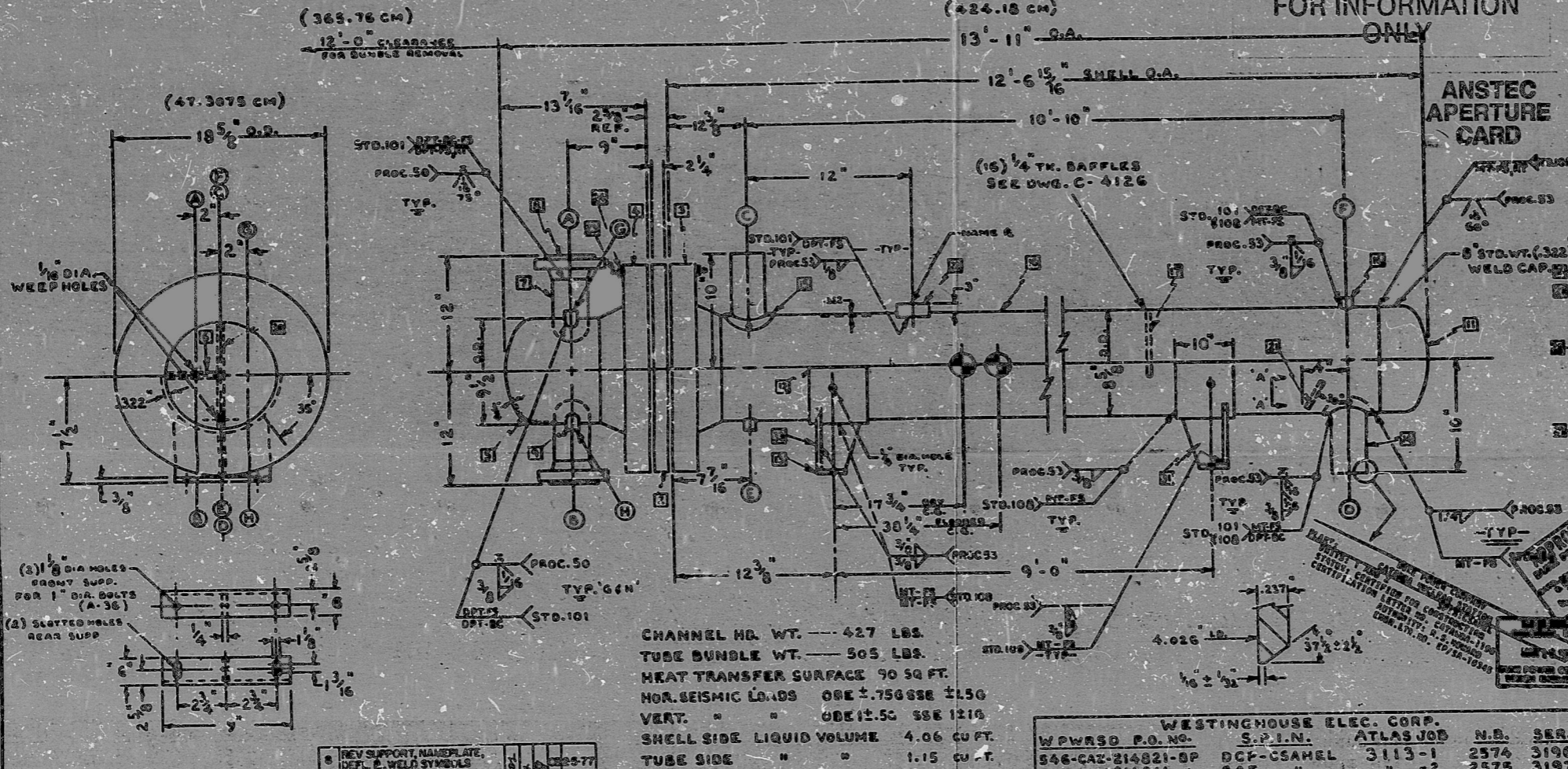


NUCLEAR SAFETY RELATED
FOR INFORMATION
ONLY



ATLAS APERTURE CARD

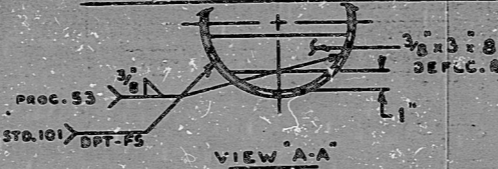
DATE	22	NO.	3728
TIME	1350	REV.	0
BY		CHKD.	
APP'D.		DATE	

- NOTES:**
1. CONSTRUCTION: A.S.A.E. BUILDER AND PROCEDURE VESSEL. CLASS SECTION III 1974 Ed., INCL. 1974 SUPPLEMENT, CLASS 2 SHELLS, CLASS 2 TUBES.
 2. TUBES TO BE SEAL WELDED AND EXCHANGED I.A.W. ATLAS STD. 102-C. 2. EXCHANGE TUBE & SHELL SIDE.
 3. 100% REQ'D - BUTT WELDS ONLY PER ATLAS STD. 106.
 4. COMPLETE INSTRUCTIONS REFER TO PARA 8.4 OF WESTINGHOUSE SPEC. 8-17-1980 REV. 1 DATED 10-16-74.
 5. TUBES TO BE EDDY CURRENT TESTED PER NG-3110 / NG-2581 AS PER SEC. III 1974 Ed. ALSO AN INTERGRANULAR CORROSION TEST IS REQ'D - AM N-333.
 6. LIGHT PENETRATION OF TUBESHEETS SHALL BE MADE, FLANGES AND C.P.G.S. 60% AFTER FINAL FORMING AND MACHINING BUT PRIOR TO TUBE DRILLING I.A.W. ATLAS STD. 101.
 7. TEST TUBE JOINTS @ 25 PSI TO HYDRO-TEST & EXPANDING I.A.W. ATLAS STD. 107.
 8. CLEAN AND PACKAGE PER STD. 102-E.
 9. ONE SET SPARE GASKETS REQ'D. MARK & WESTINGHOUSE PROPERTY ERECTION SPARES.
 10. COAT STUDS WITH THERMAL GRASSING 112 FOLLOWED BY LUGS LUG 4006.
 11. HYDRO TEST UNIT I.A.W. ATLAS STD. 111. WATER PURITY I.A.W. ATLAS STD. 102-E.
 12. ALL TOLERANCES ARE PER TEMA-R.

CHANNEL HD. WT. --- 427 LBS.
TUBE BUNDLE WT. --- 505 LBS.
HEAT TRANSFER SURFACE 90 SQ. FT.
HOR. SEISMIC LOADS ONE ±.75G SSE 115G VERT. " " ONE ±.5G SSE 121G
SHELL SIDE LIQUID VOLUME 4.06 CU. FT.
TUBE SIDE " " 1.15 CU. FT.

WPWRSD P.O. NO.	S.P.I.N.	ATLAS JOB	N.B.	SER.
546-CAZ-214821-8P	DCP-CSAHEL	3113-1	-2	2574 3196
" " 214811	CAE	"	-2	2575 3197
" " 214812	CBE	"	-3	2576 3198
" " 214813	CCE	"	-4	2577 3199
" " 214814	CDE	"	-5	2578 3200
" " 214822	DOP	"	-6	2579 3201
" " 214823	KRK	"	-7	2580 3202
" " 214824	"	"	-8	2581 3203
" " 214825	"	"	-9	2582 3204
" " 214826	"	"	-10	2583 3205
" " 214827	"	"	-11	2584 3206

MARK	PURPOSE	SIZE	TYPE	THK.	REMARKS
A	INLET	2"	1500 R.F.W.N.	.343"	
B	OUTLET	2"	1500 R.F.W.N.	.343"	
C	OUTLET	4"	BUTT WELD	.237"	.3217X R 1" WD. REIN. PAD
D	INLET	4"	BUTT WELD	.237"	W 1/2" NPT TYP. C I D
E	DRAIN	3/4"	H.C.	3000"	
F	VENT	3/4"	H.C.	3000"	
G	VENT	3/4"	S.W.H.C.	6000"	SCH. 160 BORE
H	DRAIN	3/4"	S.W.H.C.	6000"	SCH. 160 BORE



REV.	MAT'L. SPECS.	DATE	BY	CHKD.
1				
2				
3				
4				
5				
6				
7				

Drawn 1201.06-37

STUDS:	SA-143 GR. B7	GASKETS:	SPIRAL WOUND CANADIAN ASB
NUTS:	SA-144 GR. 2H	SEALS:	SA-304-TUBESIDE
			SHELL SIDE
			ROL. JACKETED (89-300 CANAD. ASB)

UNIT NO. 8-137 TYP. B.E.U.
EXCESS LETDOWN N.E.

ATLAS INDUSTRIAL MANUFACTURING CO.
100 WESTINGHOUSE BLVD.
PITTSBURGH, PA. 15201

PDR RIDS

9603180298

