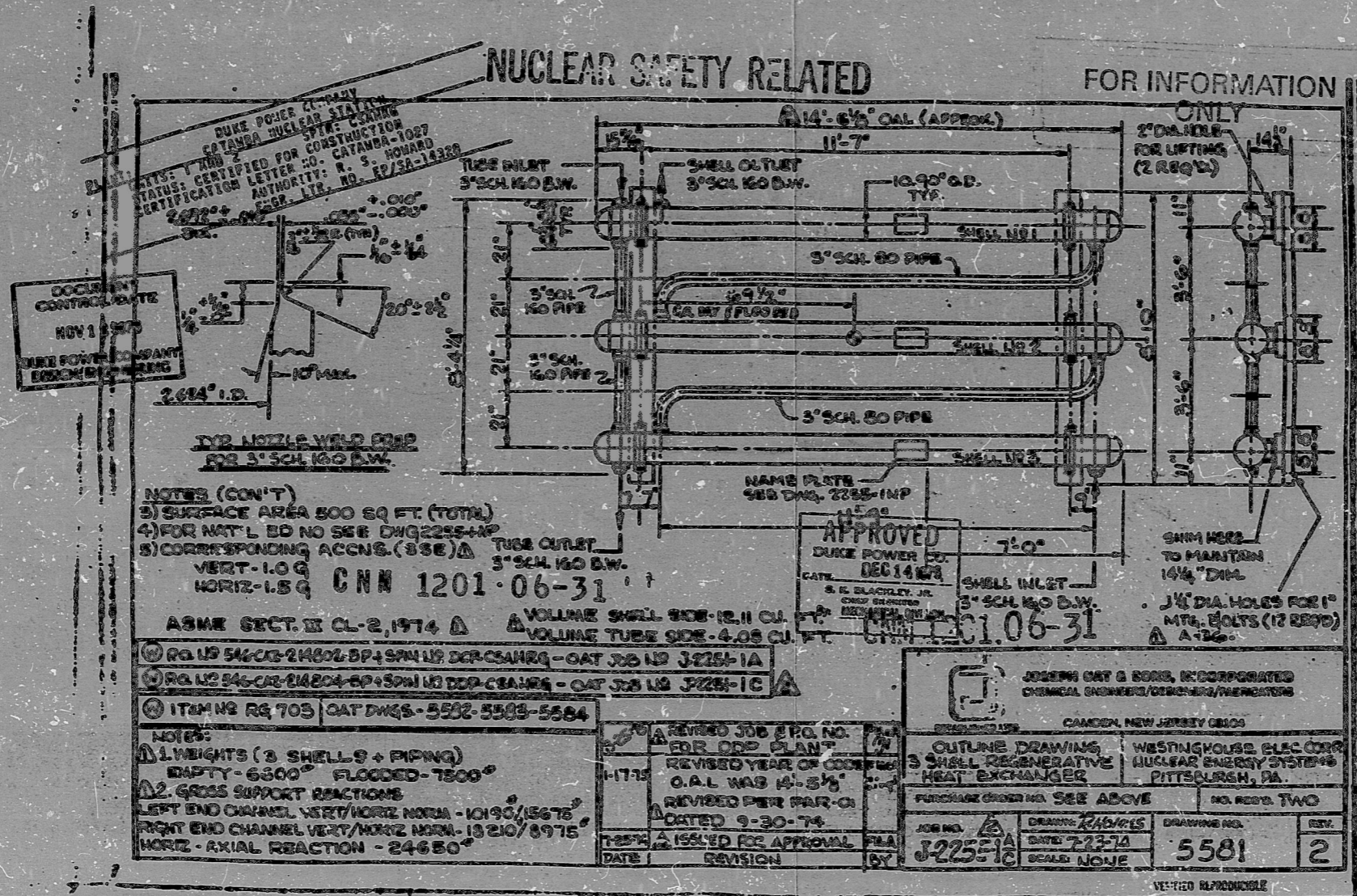


NUCLEAR SAFETY RELATED

FOR INFORMATION ONLY



DOCUMENT CONTROL DATE  
NOV 1 1973  
DUKE POWER COMPANY  
ENGINEERING

NOTES (CON'T)  
3) SURFACE AREA 500 SQ. FT. (TOTAL)  
4) FOR NAT'L ED NO SEE DWG 2255-IMP  
5) CORRESPONDING ACCNS. (SEE) Δ  
VERT - 1.0 G  
HORIZ - 1.5 G  
C N N 1201-06-31

ASME SECT. III CL-2, 1974 Δ  
VOLUME SHELL SIDE - 12.11 CU. FT.  
VOLUME TUBE SIDE - 4.08 CU. FT.

REG. NO. 546-CR-21804-SP-15N US DEP-CENRG - CAT J25 US J225-1A  
REG. NO. 546-CR-21804-SP-15N US DEP-CENRG - CAT J25 US J225-1C Δ  
ITEMS REQ 703 CAT DWGS - 5502-5503-5504

NOTES:  
1) HEIGHTS (3 SHELLS + PIPING)  
EMPTY - 6500" FLOODED - 7500"  
2) GROSS SUPPORT REACTIONS  
LEFT END CHANNEL VERT/HORIZ NORM - 10190/15675  
RIGHT END CHANNEL VERT/HORIZ NORM - 13210/8975  
HORIZ - AXIAL REACTION - 24650"

REVISED JOB # P.O. NO.	FILE
FOR DRP PLAN	
REVISED YEAR OF CONSTRUCTION	
O.A.L. WAS 14'-5 1/2"	
REVISED PER PAR-O	
DATED 9-30-74	
ISSUED FOR APPROVAL	FILE
DATE	REVISION

APPROVED  
DUKE POWER CO.  
DEC 14 1973  
S. E. BRADLEY, JR.  
CHIEF ENGINEER  
NUCLEAR DIVISION

JOSEPH CAT & SORE, INCORPORATED  
CHEMICAL ENGINEERS/DESIGNERS/PLANNERS  
CAMDEN, NEW JERSEY 08105

OUTLINE DRAWING  
SHELL REGENERATIVE  
HEAT EXCHANGER  
WESTINGHOUSE ELEC CORP  
NUCLEAR ENERGY SYSTEMS  
PITTSBURGH, PA.

PURCHASE ORDER NO. SEE ABOVE	NO. REFS. TWO
JOB NO. Δ	DRAWING NO.
DATE 7-22-74	5581
SCALE NONE	REV. 2

ANSTEC  
APERTURE  
CARD

C B I A O W A I B C I  
24

PDR RIDS

9603180290

