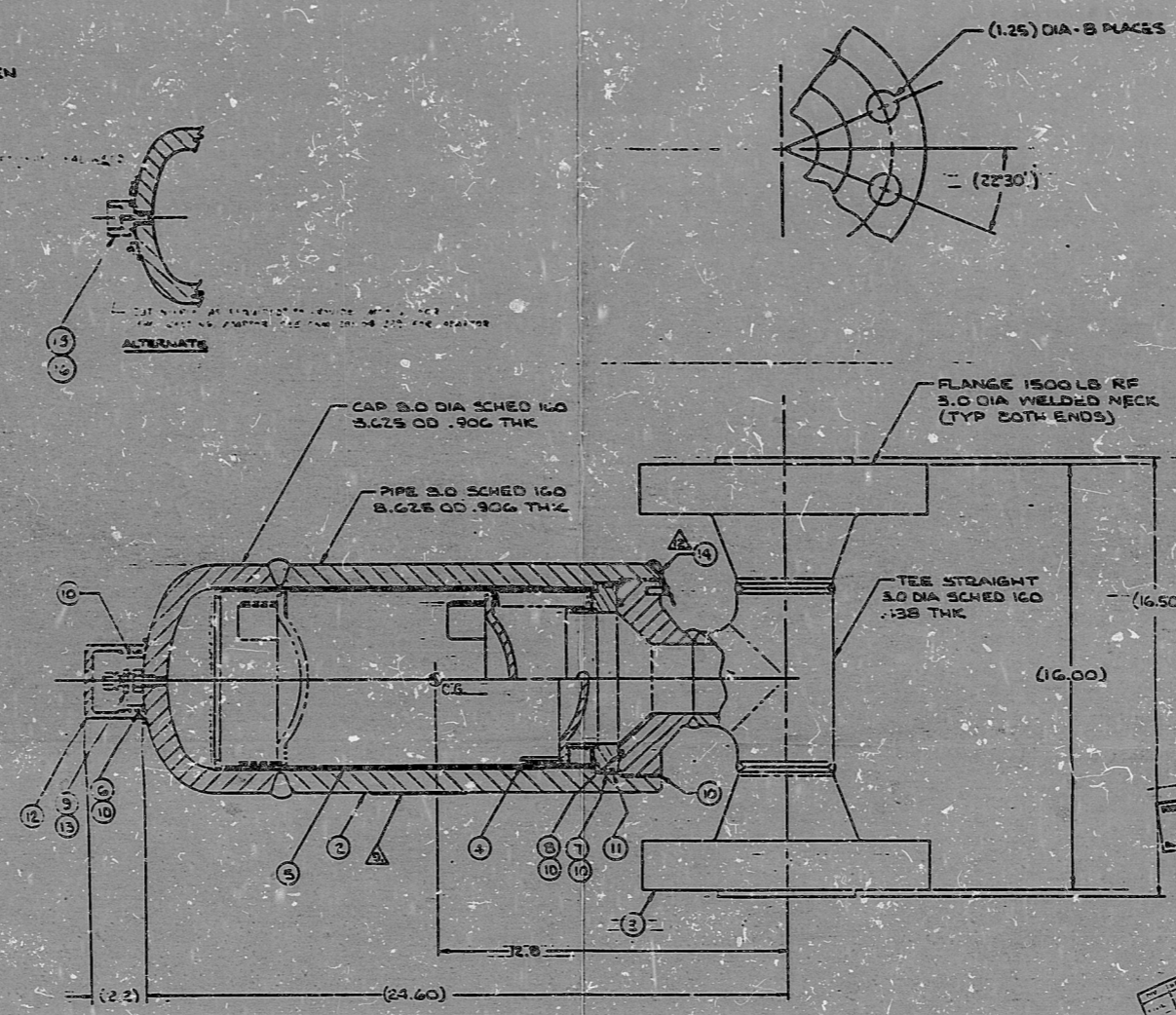


1. MATERIAL TRACEABILITY TO BE MAINTAINED AT ALL TIMES IN ACCORDANCE WITH SOME SECTION 3.1 PARA 3.150.6 USING THE PROCEDURE AS DEFINED IN NBC NUCLEAR QA MANUAL BY 9.1.
2. CLEAN PER ANSI N45.2.1 CL. C.
3. PACKAGE AND SHIP PER ANSI N45.2.2 IN INDIVIDUAL WOODEN CRATE. MARK CONTAINER WITH MARK NO. PO NO AND PULSE SPEC NO.
4. DESIGN CONDITIONS:
 NORMAL OPER. PRESS. 2400 PSIG
 NORMAL OPER. TEMP. 115°F
 DESIGN PRESS. 2735 PSIG
 DESIGN TEMP. 150°F
 HYDROTEST PRESS. 4102.5 PSIG
 HYDROTEST TEMP. 70°F
 CHARGE PRESS. IN TANK (100 PSI) BY 2735 PSIG AT 70°F
 FLUID SERVICE: RADIOACTIVE DECONTAMATED WATER
5. HYDROTEST PRESS: 4102.5 PSIG AT 70°F FOR 8 MINUTES MINUS LEAKS. DECONTAMATED WATER IN ACCORDANCE WITH ANSI N45.2.1. NO PERMANENT DEFORMATION ALLOWED.
6. IMMEDIATELY AFTER PRESS. TESTING AND FINAL CLEANING BOLT PLYWOOD COVERS OVER THE FLANGES.
7. IDENTIFY ON A NAMEPLATE (U.S. 10 31 032 THK CRES 304, BY ELECTRO-CHEMICAL ETCHING THE FOLLOWING INFO: .034 MIN LETTER HEIGHT, SECURE ON HOUSING BODY BY TACK WELDING (TIG), ALL FOUR CORNER MIN. PULSATION DAMPER ASSY WILL POWER PURCHASE ORDER NO. C-89093 METAL BELLOWS CORP. SERIAL NO. DESIGN PRESS. AND TEMP. 150°F AND 350°F HYDROSTATIC TEST PRESS. 4102.5 PSIG AT 70°F NATIONAL BOARD REGISTRATION NO. YEAR OF MFG. VOLUME OF PULSATION DAMPER: 2 GALLONS
8. DRY WEIGHT NOT TO EXCEED 320 O. LB.
9. APPLY REPAIR TO ALL TOUGHS AND CRACKS AS INDICATED.
10. TO OPEN HOUSING ASSY UNTIL FULLY BOTTOMED OUT & LOCKWIRE.



REV	DESCRIPTION	DATE	BY
A	REVISED PER ECO #10753	10/17/71	JL
B	ECO # 22823	11/18/71	JL
C	ECO # 74918	11/26/71	JL
D	REVISED PER ECO #24566	1/23/72	JL
E	REVISED PER ECO # 11124	1/23/72	JL
F	REVISED PER ECO # 11124	1/23/72	JL
G	REVISED PER ECO # 11124	1/23/72	JL
H	REVISED PER ECO # 11124	1/23/72	JL

FOR INFORMATION ONLY

NUCLEAR CLASS 2

OWN 1201.04-0174 001

NA CONDITION 1

WILL POWER SUPPLY ORDER NO. C-89093

DUKE ITEM NO. 8337-1201.04-00-0002

QTY	UNIT	DESCRIPTION	PRICE	TOTAL
1	EA	C78884-11 O-RING	1.00	1.00
1	EA	C78224 FITTING	1.00	1.00
1	EA	MS20956-1 LOCKWIRE	3.00	3.00
1	EA	C75570-2 PIN	321/ASTM A284	
1	EA	C75570-1 FITTING	304/SA182	
1	EA	MS24690 O-RING	NITRILE	13
1	EA	C74864 CAP	304/ASTM A304	12
1	EA	B75873-1 BACKUP RING	304/SA182	11
1	EA	SEE NOTE 11 LUBRICANT		10
1	EA	C76723-1 CHARGE VALVE	CRES 08-5-124	9
1	EA	B74884-4 O-RING	304/SA182	8
1	EA	B74884-3 O-RING	304/SA182	7
1	EA	B74884-2 O-RING	304/SA182	6
1	EA	C75872 INSERT	304/ASTM A304	5
1	EA	B75871 CAP	304/SA182	4
1	EA	C74857 ADAPTOR	304/SA182	3
1	EA	B75861 PIPE	304/SA182	2
1	EA	ER 308L WELD ROD	ER308/TP40	1
1	EA	C75870 FITTING ASSY		1
1	EA	C75872 TEE	304/SA182	1
1	EA	C75861 FLANGE	304/SA182	1
1	EA	B75869 STOP	304/ASTM A304	1
1	EA	C75868 TERMINAL	304/SA182	1
1	EA	B75867 BELLWYS	321/ASTM A286	1
1	EA	TETRA-ETCH ETCHANT		1
1	EA	EA934 EPOXY		1
1	EA	C75866 TERMINAL	304/SA182	1
1	EA	E75865 PAD	RULON 'A'	1
1	EA	C75864 FOOT	304/ASTM A304	1
1	EA	C75863 SWEEPER ASSY		1
1	EA	C75862 BELLWYS ASSY		1
1	EA	C75861 TEE ASSY		1
1	EA	B75860 HOUSING ASSY		1
1	EA	T6016 ASSY		1

PROPRIETARY NOTICE

This document embodies proprietary information originated in Metal Bellows Corporation (MBC) and is furnished in confidence with the express understanding that neither it nor any reproduction thereof will be disclosed to any third party or the information thereon used for the purpose of manufacture or procurement for other than NBC.

DO NOT MANUFACTURE TO THIS DRAWING REFERENCE DRAWING ONLY

ANSTEC APERTURE CARD

NA CONDITION 1

REV	DESCRIPTION	DATE	BY
1	ISSUED FOR CONSTRUCTION	10/17/71	JL
2	REVISED PER ECO # 11124	1/23/72	JL
3	REVISED PER ECO # 11124	1/23/72	JL
4	REVISED PER ECO # 11124	1/23/72	JL
5	REVISED PER ECO # 11124	1/23/72	JL

PARTS LIST

METAL BELLOWS CORP. 2007 W. 10TH ST. CHICAGO, ILL. 60640

PULSATION DAMPER ASSY-RECIPROCATING CHARGING PUMP (2 GALLONS)

E 16519 76016

PDR RIDS

9603180285

