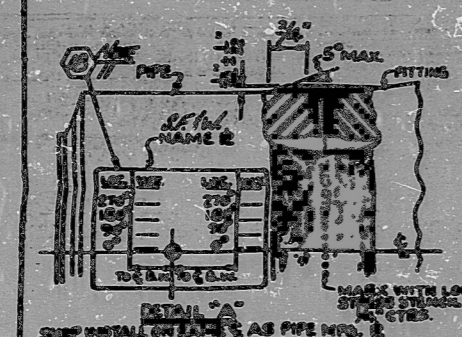
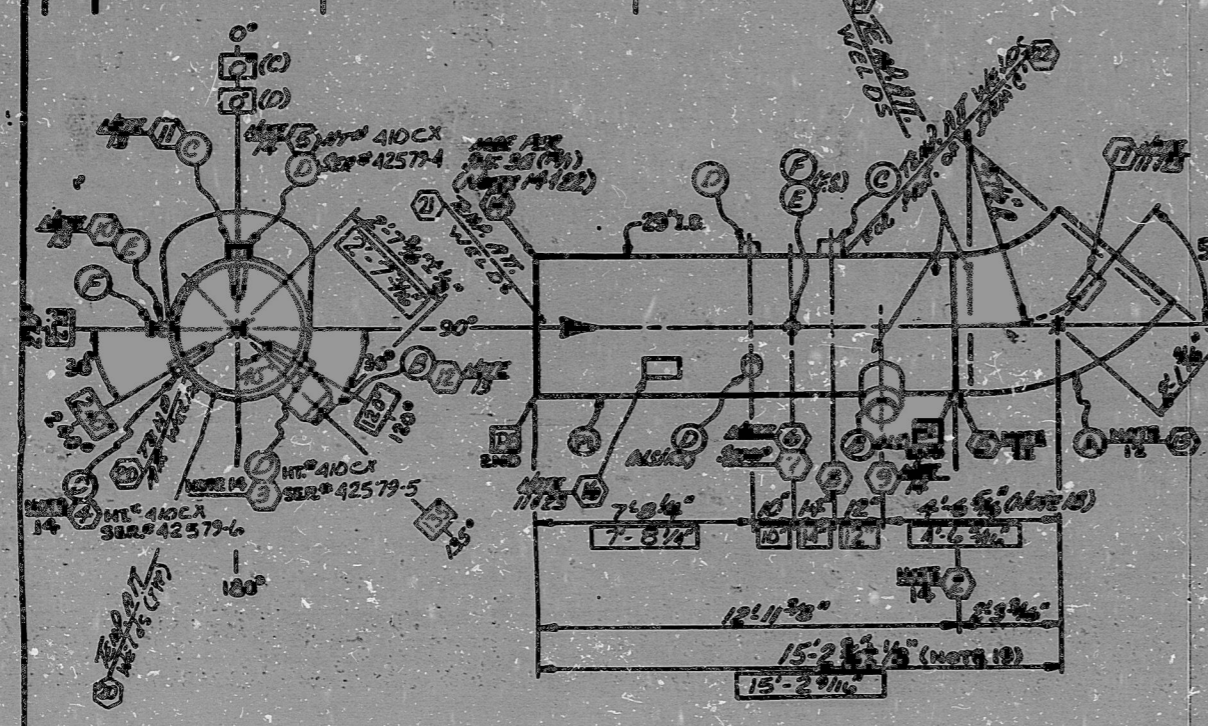


ANSTEC
APERTURE
CARD

FIELD END DIMENSIONAL CHECK	
Cap. 2.00	LP THICKNESS = 0.020" ± 0.005"
ACTUAL = 2.00	ACTUAL = 0.020" ± 0.005"
Cap. 1.75	LP THICKNESS = 0.020" ± 0.005"
ACTUAL = 1.75	ACTUAL = 0.020" ± 0.005"
Cap. 1.00	LP THICKNESS = 0.020" ± 0.005"
ACTUAL = 1.00	ACTUAL = 0.020" ± 0.005"

WALL THICKNESS AND WELD JOINT LOCATION					
ITEM	Q	ST	100	100	IN LOCATION
1	2	100	2.4	2.4	7.6%
2	2	250	2.4	2.4	5.5%



NOTE 1
SOUTHWEST FABRICATING
LOS ANGELES CO.
(Name of Manufacturer)
.....18992.....
(Manufacturer's Serial No.)
.....1979.....
(Year Built)

1-REQD MK:DDP-100P-2-C-1

- ANSI Z39.18-1968
CODE CASE 1423-2
1. THIS DRAWING IS THE BASIS FOR THE FABRICATION OF THE ANSTEC APERTURE CARD. IT IS TO BE USED AS THE BASIS FOR THE FABRICATION OF THE ANSTEC APERTURE CARD AND FOR THE FABRICATION OF THE ANSTEC APERTURE CARD.
 2. THE ANSTEC APERTURE CARD IS TO BE FABRICATED IN ACCORDANCE WITH THE REQUIREMENTS OF THE ANSTEC APERTURE CARD.
 3. THE ANSTEC APERTURE CARD IS TO BE FABRICATED IN ACCORDANCE WITH THE REQUIREMENTS OF THE ANSTEC APERTURE CARD.
 4. THE ANSTEC APERTURE CARD IS TO BE FABRICATED IN ACCORDANCE WITH THE REQUIREMENTS OF THE ANSTEC APERTURE CARD.
 5. THE ANSTEC APERTURE CARD IS TO BE FABRICATED IN ACCORDANCE WITH THE REQUIREMENTS OF THE ANSTEC APERTURE CARD.
 6. THE ANSTEC APERTURE CARD IS TO BE FABRICATED IN ACCORDANCE WITH THE REQUIREMENTS OF THE ANSTEC APERTURE CARD.
 7. THE ANSTEC APERTURE CARD IS TO BE FABRICATED IN ACCORDANCE WITH THE REQUIREMENTS OF THE ANSTEC APERTURE CARD.
 8. THE ANSTEC APERTURE CARD IS TO BE FABRICATED IN ACCORDANCE WITH THE REQUIREMENTS OF THE ANSTEC APERTURE CARD.
 9. THE ANSTEC APERTURE CARD IS TO BE FABRICATED IN ACCORDANCE WITH THE REQUIREMENTS OF THE ANSTEC APERTURE CARD.
 10. THE ANSTEC APERTURE CARD IS TO BE FABRICATED IN ACCORDANCE WITH THE REQUIREMENTS OF THE ANSTEC APERTURE CARD.
 11. THE ANSTEC APERTURE CARD IS TO BE FABRICATED IN ACCORDANCE WITH THE REQUIREMENTS OF THE ANSTEC APERTURE CARD.
 12. THE ANSTEC APERTURE CARD IS TO BE FABRICATED IN ACCORDANCE WITH THE REQUIREMENTS OF THE ANSTEC APERTURE CARD.
 13. THE ANSTEC APERTURE CARD IS TO BE FABRICATED IN ACCORDANCE WITH THE REQUIREMENTS OF THE ANSTEC APERTURE CARD.
 14. THE ANSTEC APERTURE CARD IS TO BE FABRICATED IN ACCORDANCE WITH THE REQUIREMENTS OF THE ANSTEC APERTURE CARD.
 15. THE ANSTEC APERTURE CARD IS TO BE FABRICATED IN ACCORDANCE WITH THE REQUIREMENTS OF THE ANSTEC APERTURE CARD.
 16. THE ANSTEC APERTURE CARD IS TO BE FABRICATED IN ACCORDANCE WITH THE REQUIREMENTS OF THE ANSTEC APERTURE CARD.
 17. THE ANSTEC APERTURE CARD IS TO BE FABRICATED IN ACCORDANCE WITH THE REQUIREMENTS OF THE ANSTEC APERTURE CARD.
 18. THE ANSTEC APERTURE CARD IS TO BE FABRICATED IN ACCORDANCE WITH THE REQUIREMENTS OF THE ANSTEC APERTURE CARD.
 19. THE ANSTEC APERTURE CARD IS TO BE FABRICATED IN ACCORDANCE WITH THE REQUIREMENTS OF THE ANSTEC APERTURE CARD.
 20. THE ANSTEC APERTURE CARD IS TO BE FABRICATED IN ACCORDANCE WITH THE REQUIREMENTS OF THE ANSTEC APERTURE CARD.
 21. THE ANSTEC APERTURE CARD IS TO BE FABRICATED IN ACCORDANCE WITH THE REQUIREMENTS OF THE ANSTEC APERTURE CARD.
 22. THE ANSTEC APERTURE CARD IS TO BE FABRICATED IN ACCORDANCE WITH THE REQUIREMENTS OF THE ANSTEC APERTURE CARD.
 23. THE ANSTEC APERTURE CARD IS TO BE FABRICATED IN ACCORDANCE WITH THE REQUIREMENTS OF THE ANSTEC APERTURE CARD.

ITEM	DESCRIPTION	QTY	UNIT	PRICE	TOTAL
1	APERTURE CARD	1	EA	100.00	100.00
2
3
4
5
6
7
8
9
10
11
12
13
14
15
16
17
18
19
20
21
22
23
TOTAL					...

FOR INFORMATION ONLY
346 CVR-174713-BN NUCLEAR SAFETY RELATED
DDP-ROCFB-07

ADDRESS BUILT DATA	NO.	DATE
RELEASED ITEM O.C.D.E.F	15	8-2-73
ORIGINAL ISSUE	15	8-2-73
REVISION	CHKD	DATE

PDR RIDS

9403180115

