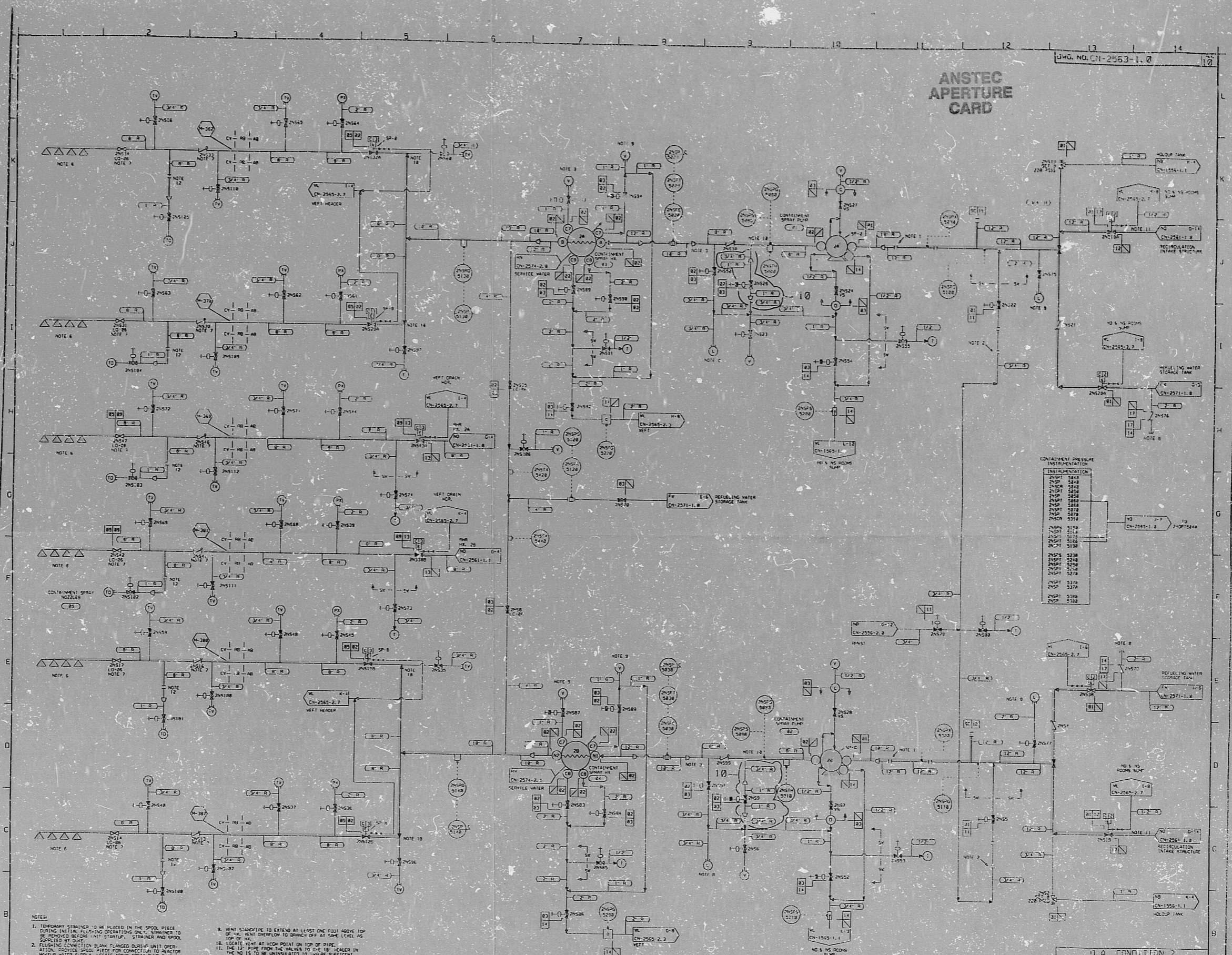


ANSTEC APERTURE CARD

DWG. NO. CN-2563-1.0



- NOTES**
- TEMPORARY STRAINER TO BE PLACED IN THE SPOOL PIECE DURING INITIAL FLOWING OPERATIONS ONLY. STRAINERS TO BE REMOVED BEFORE UNIT STARTUP. STRAINER AND SPOOL TO BE PURGED BY DATE.
 - FLUSHING CONNECTION BLANK FLANGED OUT-UP UNIT OPERATION. PROVIDE CONNECTION PLUG FOR CONNECTION TO REACTOR MAKEUP WATER SUPPLY. LOCATE ABOVE SPRAY TANK SHIELD.
 - LOCATE AT LOW POINT ON BOTTOM OF PIPE.
 - NO INSULATION REQUIRED.
 - VENT STACKPIPE TO EXTEND AT LEAST ONE FOOT ABOVE TOP OF NO. VENT OVERFLOW TO BRING OUT AT SAME LEVEL AS LOCATE NEAR AT HIGH POINT ON TOP OF PIPE.
 - THE LEAD PIPE FROM THE VALVE TO THE NO. VENT OVERFLOW TO BE UNINSULATED TO INSURE SUFFICIENT HEAT LOSS DURING INSTANTANEOUS TRANSMISSION.
 - THIS SET OF FLANGES SERVE AS A SERVICE CLEANING CONNECTION.
 - USE SCHEDULE 40 PIPE FOR ALL LINES IN THE REACTOR BUILDING FOR STEAM AND COOLANT PURPOSES.
 - SEE WESTINGHOUSE CONTAINMENT SPRAY NOZZLE & HEADER DESIGN CRITERIA NO. 6 & FOR DETAILS. (CATAWBA 184)
 - NOZZLES MUST BE MISILE PROTECTED.
 - PORTABLE PUMP MODULE TO TRANSFER WATER BACK TO BAS1 FOR LINE MAINTENANCE. THIS LINE MUST NOT BE USED AFTER LOCAL.

ERN:CN001FC

DESIGN PARAMETERS

LINE LISTING	PIPE SPEC.	PRESSURE	TEMPERATURE	CLASS	MATERIAL
01	301.2	230 PSIA	180°F	B	SS
02	301.2	230 PSIA	180°F	B	SS
03	301.4	230 PSIA	180°F	B	SS
04	301.2	210 PSIA	180°F	B	SS
05	301.4	210 PSIA	180°F	B	SS
06	301.2	180 PSIA	180°F	B	SS
07	301.4	180 PSIA	180°F	B	SS
08	301.2	180 PSIA	180°F	B	SS
09	301.4	180 PSIA	180°F	B	SS
10	301.2	180 PSIA	180°F	B	SS
11	301.4	180 PSIA	180°F	B	SS
12	301.2	180 PSIA	180°F	B	SS
13	301.4	180 PSIA	180°F	B	SS
14	301.2	180 PSIA	180°F	B	SS
15	301.4	180 PSIA	180°F	B	SS

REVISIONS

NO.	DESCRIPTION	CHKD	DATE	APPD	DATE	INSPECTED
10	REV. PER CE-4462	ARC	7/27/74	ARC	7/27/74	ARC
9	REV. PER NSM #CN-20621/00	ARC	12/23/73	ARC	12/23/73	ARC
8	REV. PER NSM #CN-20621/00	ARC	12/23/73	ARC	12/23/73	ARC
7	REV. PER NSM #CN-20621/00	ARC	12/23/73	ARC	12/23/73	ARC
6	REV. PER NSM #CN-20621/00	ARC	12/23/73	ARC	12/23/73	ARC
5	REV. PER NSM #CN-20621/00	ARC	12/23/73	ARC	12/23/73	ARC
4	REV. PER NSM #CN-20621/00	ARC	12/23/73	ARC	12/23/73	ARC
3	REV. PER NSM #CN-20621/00	ARC	12/23/73	ARC	12/23/73	ARC
2	REV. PER NSM #CN-20621/00	ARC	12/23/73	ARC	12/23/73	ARC
1	REV. PER NSM #CN-20621/00	ARC	12/23/73	ARC	12/23/73	ARC

CONTAINMENT PRESSURE INSTRUMENTATION

INSTRUMENTATION	NO.	DESCRIPTION
25P1	2510	CONTAINMENT PRESSURE
25P2	2511	CONTAINMENT PRESSURE
25P3	2512	CONTAINMENT PRESSURE
25P4	2513	CONTAINMENT PRESSURE
25P5	2514	CONTAINMENT PRESSURE
25P6	2515	CONTAINMENT PRESSURE
25P7	2516	CONTAINMENT PRESSURE
25P8	2517	CONTAINMENT PRESSURE
25P9	2518	CONTAINMENT PRESSURE
25P10	2519	CONTAINMENT PRESSURE
25P11	2520	CONTAINMENT PRESSURE
25P12	2521	CONTAINMENT PRESSURE
25P13	2522	CONTAINMENT PRESSURE
25P14	2523	CONTAINMENT PRESSURE
25P15	2524	CONTAINMENT PRESSURE
25P16	2525	CONTAINMENT PRESSURE
25P17	2526	CONTAINMENT PRESSURE
25P18	2527	CONTAINMENT PRESSURE
25P19	2528	CONTAINMENT PRESSURE
25P20	2529	CONTAINMENT PRESSURE
25P21	2530	CONTAINMENT PRESSURE
25P22	2531	CONTAINMENT PRESSURE
25P23	2532	CONTAINMENT PRESSURE
25P24	2533	CONTAINMENT PRESSURE
25P25	2534	CONTAINMENT PRESSURE
25P26	2535	CONTAINMENT PRESSURE
25P27	2536	CONTAINMENT PRESSURE
25P28	2537	CONTAINMENT PRESSURE
25P29	2538	CONTAINMENT PRESSURE
25P30	2539	CONTAINMENT PRESSURE
25P31	2540	CONTAINMENT PRESSURE
25P32	2541	CONTAINMENT PRESSURE
25P33	2542	CONTAINMENT PRESSURE
25P34	2543	CONTAINMENT PRESSURE
25P35	2544	CONTAINMENT PRESSURE
25P36	2545	CONTAINMENT PRESSURE
25P37	2546	CONTAINMENT PRESSURE
25P38	2547	CONTAINMENT PRESSURE
25P39	2548	CONTAINMENT PRESSURE
25P40	2549	CONTAINMENT PRESSURE
25P41	2550	CONTAINMENT PRESSURE
25P42	2551	CONTAINMENT PRESSURE
25P43	2552	CONTAINMENT PRESSURE
25P44	2553	CONTAINMENT PRESSURE
25P45	2554	CONTAINMENT PRESSURE
25P46	2555	CONTAINMENT PRESSURE
25P47	2556	CONTAINMENT PRESSURE
25P48	2557	CONTAINMENT PRESSURE
25P49	2558	CONTAINMENT PRESSURE
25P50	2559	CONTAINMENT PRESSURE
25P51	2560	CONTAINMENT PRESSURE
25P52	2561	CONTAINMENT PRESSURE
25P53	2562	CONTAINMENT PRESSURE
25P54	2563	CONTAINMENT PRESSURE
25P55	2564	CONTAINMENT PRESSURE
25P56	2565	CONTAINMENT PRESSURE
25P57	2566	CONTAINMENT PRESSURE
25P58	2567	CONTAINMENT PRESSURE
25P59	2568	CONTAINMENT PRESSURE
25P60	2569	CONTAINMENT PRESSURE
25P61	2570	CONTAINMENT PRESSURE
25P62	2571	CONTAINMENT PRESSURE
25P63	2572	CONTAINMENT PRESSURE
25P64	2573	CONTAINMENT PRESSURE
25P65	2574	CONTAINMENT PRESSURE
25P66	2575	CONTAINMENT PRESSURE
25P67	2576	CONTAINMENT PRESSURE
25P68	2577	CONTAINMENT PRESSURE
25P69	2578	CONTAINMENT PRESSURE
25P70	2579	CONTAINMENT PRESSURE
25P71	2580	CONTAINMENT PRESSURE
25P72	2581	CONTAINMENT PRESSURE
25P73	2582	CONTAINMENT PRESSURE
25P74	2583	CONTAINMENT PRESSURE
25P75	2584	CONTAINMENT PRESSURE
25P76	2585	CONTAINMENT PRESSURE
25P77	2586	CONTAINMENT PRESSURE
25P78	2587	CONTAINMENT PRESSURE
25P79	2588	CONTAINMENT PRESSURE
25P80	2589	CONTAINMENT PRESSURE
25P81	2590	CONTAINMENT PRESSURE
25P82	2591	CONTAINMENT PRESSURE
25P83	2592	CONTAINMENT PRESSURE
25P84	2593	CONTAINMENT PRESSURE
25P85	2594	CONTAINMENT PRESSURE
25P86	2595	CONTAINMENT PRESSURE
25P87	2596	CONTAINMENT PRESSURE
25P88	2597	CONTAINMENT PRESSURE
25P89	2598	CONTAINMENT PRESSURE
25P90	2599	CONTAINMENT PRESSURE
25P91	2600	CONTAINMENT PRESSURE
25P92	2601	CONTAINMENT PRESSURE
25P93	2602	CONTAINMENT PRESSURE
25P94	2603	CONTAINMENT PRESSURE
25P95	2604	CONTAINMENT PRESSURE
25P96	2605	CONTAINMENT PRESSURE
25P97	2606	CONTAINMENT PRESSURE
25P98	2607	CONTAINMENT PRESSURE
25P99	2608	CONTAINMENT PRESSURE
25P100	2609	CONTAINMENT PRESSURE

O.A. CONDITION 2
O.A. CONDITION 1

DUKE POWER COMPANY
CATAWBA NUCLEAR STATION UNIT 2

FLOW DIAGRAM OF
CONTAINMENT SPRAY SYSTEM

DWG. NO. CN-2563-1.0

PDR RIDS

9603180036

