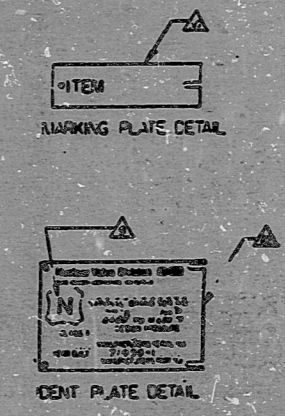
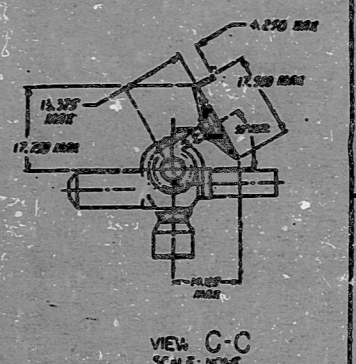


NO.	REVISIONS	DATE	BY
1	PRELIMINARY DESIGN	1/14/65	W.C.H.
2	DESIGN CHANGES	1/21/65	W.C.H.
3	REWORKED AS V	2/10/65	W.C.H.
4	REWORKED AS V	2/10/65	W.C.H.
5	REWORKED AS V	2/10/65	W.C.H.
6	REWORKED AS V	2/10/65	W.C.H.
7	REWORKED AS V	2/10/65	W.C.H.
8	REWORKED AS V	2/10/65	W.C.H.
9	REWORKED AS V	2/10/65	W.C.H.
10	REWORKED AS V	2/10/65	W.C.H.
11	REWORKED AS V	2/10/65	W.C.H.
12	REWORKED AS V	2/10/65	W.C.H.
13	REWORKED AS V	2/10/65	W.C.H.
14	REWORKED AS V	2/10/65	W.C.H.
15	REWORKED AS V	2/10/65	W.C.H.
16	REWORKED AS V	2/10/65	W.C.H.
17	REWORKED AS V	2/10/65	W.C.H.
18	REWORKED AS V	2/10/65	W.C.H.
19	REWORKED AS V	2/10/65	W.C.H.
20	REWORKED AS V	2/10/65	W.C.H.
21	REWORKED AS V	2/10/65	W.C.H.
22	REWORKED AS V	2/10/65	W.C.H.
23	REWORKED AS V	2/10/65	W.C.H.
24	REWORKED AS V	2/10/65	W.C.H.
25	REWORKED AS V	2/10/65	W.C.H.
26	REWORKED AS V	2/10/65	W.C.H.
27	REWORKED AS V	2/10/65	W.C.H.
28	REWORKED AS V	2/10/65	W.C.H.
29	REWORKED AS V	2/10/65	W.C.H.
30	REWORKED AS V	2/10/65	W.C.H.



REV.	DATE	BY	CHKD.
1	1/14/65	W.C.H.	
2	1/21/65	W.C.H.	
3	2/10/65	W.C.H.	
4	2/10/65	W.C.H.	
5	2/10/65	W.C.H.	
6	2/10/65	W.C.H.	
7	2/10/65	W.C.H.	
8	2/10/65	W.C.H.	
9	2/10/65	W.C.H.	
10	2/10/65	W.C.H.	
11	2/10/65	W.C.H.	
12	2/10/65	W.C.H.	
13	2/10/65	W.C.H.	
14	2/10/65	W.C.H.	
15	2/10/65	W.C.H.	
16	2/10/65	W.C.H.	
17	2/10/65	W.C.H.	
18	2/10/65	W.C.H.	
19	2/10/65	W.C.H.	
20	2/10/65	W.C.H.	
21	2/10/65	W.C.H.	
22	2/10/65	W.C.H.	
23	2/10/65	W.C.H.	
24	2/10/65	W.C.H.	
25	2/10/65	W.C.H.	
26	2/10/65	W.C.H.	
27	2/10/65	W.C.H.	
28	2/10/65	W.C.H.	
29	2/10/65	W.C.H.	
30	2/10/65	W.C.H.	

DOCUMENT CONTROL DATE
DEC 05 1965
DUKE POWER COMPANY
DESIGN ENGINEERING

CNW 1235.00-0262 002

QA CONDITION 1

APPROVED
DUKE POWER
DEC 10 1965
W. F. WYKE
MECHANICAL ENGINEER

NO.	REVISIONS	DATE	BY
1	DESIGN	1/14/65	W.C.H.
2	DESIGN CHANGES	1/21/65	W.C.H.
3	REWORKED AS V	2/10/65	W.C.H.
4	REWORKED AS V	2/10/65	W.C.H.
5	REWORKED AS V	2/10/65	W.C.H.
6	REWORKED AS V	2/10/65	W.C.H.
7	REWORKED AS V	2/10/65	W.C.H.
8	REWORKED AS V	2/10/65	W.C.H.
9	REWORKED AS V	2/10/65	W.C.H.
10	REWORKED AS V	2/10/65	W.C.H.
11	REWORKED AS V	2/10/65	W.C.H.
12	REWORKED AS V	2/10/65	W.C.H.
13	REWORKED AS V	2/10/65	W.C.H.
14	REWORKED AS V	2/10/65	W.C.H.
15	REWORKED AS V	2/10/65	W.C.H.
16	REWORKED AS V	2/10/65	W.C.H.
17	REWORKED AS V	2/10/65	W.C.H.
18	REWORKED AS V	2/10/65	W.C.H.
19	REWORKED AS V	2/10/65	W.C.H.
20	REWORKED AS V	2/10/65	W.C.H.
21	REWORKED AS V	2/10/65	W.C.H.
22	REWORKED AS V	2/10/65	W.C.H.
23	REWORKED AS V	2/10/65	W.C.H.
24	REWORKED AS V	2/10/65	W.C.H.
25	REWORKED AS V	2/10/65	W.C.H.
26	REWORKED AS V	2/10/65	W.C.H.
27	REWORKED AS V	2/10/65	W.C.H.
28	REWORKED AS V	2/10/65	W.C.H.
29	REWORKED AS V	2/10/65	W.C.H.
30	REWORKED AS V	2/10/65	W.C.H.

714901

PDR RIDS

9603150229

