

AO
VERIFIED
SYS 2.1MMH
2SVH1, 2SVH2

HIGH ENERGY

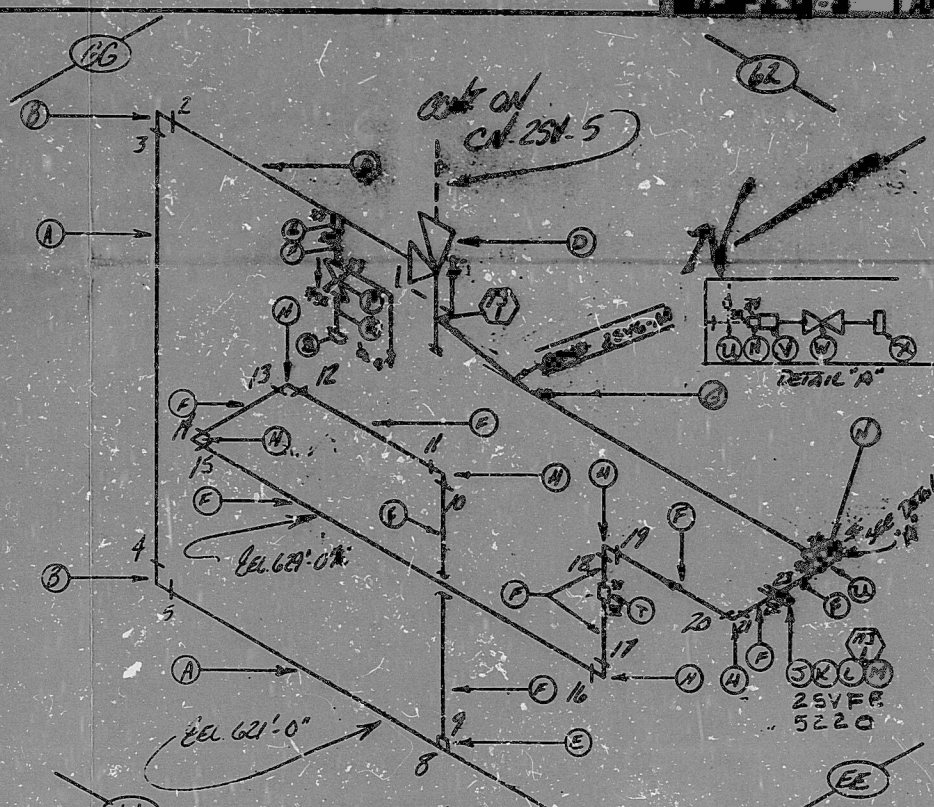
BILL OF MATERIAL									
ITEM	QTY	UNIT	DESCRIPTION	UNIT	QTY	UNIT	DESCRIPTION	UNIT	QTY
A	45	B	CS 3106 6	PIPE	SALES	6"	80	SALES	80
B	2	B	CS 3106 8	90° ELL	SALES	6"	80	SALES	80
C	1	B	CS	2SV0242 (GT) 8W	—	6"	80	SALES	80
D	1	B	CS	2SV027 (VC) 8W	—	6"	80	SALES	80
E	2	B	CS 3106 1	FLG	SALES	1"	80	SALES	80
F	25	A	CS 3106 8	PIPE	SALES	1"	80	SALES	80
G	2	B	CS 3106 8	PIPE (TEE)	SALES	1"	80	SALES	80
H	6	B	CS 3106 1	FLG	SALES	1"	80	SALES	80
J	2	B	CS 3106 1	FLG (L500R) 3W	FOR	1"	80	SALES	80
K	2	A	SALES	GASKET (G-6)	—	1"	80	SALES	80
L	4	B	CS 3106 8	3/8" (R-5)	—	8"	80	SALES	80
M	8	B	CS 3106 2N	WTS (R-5)	—	8"	80	SALES	80
N	2	B	CS 3106 1	WTS (R-5)	FOR	1"	80	SALES	80
P	1	B	CS	2SV065 GL SW	—	1"	80	SALES	80
R	1	B	CS	2SV065 GL SW	—	1"	80	SALES	80
S	1	B	CS 3106 1	PIPE CAP THREA	FOR	1"	80	SALES	80
T	1	B	CS 3106 1	FULL CALG. (SW)	FOR	1"	80	SALES	80
U	1	B	CS 3106 1	TEE (SW)	FOR	1"	80	SALES	80
V	1	B	CS 3106 1	CONNECTOR (SW)	FOR	1"	80	SALES	80
W	1	B	CS	VALVE 2SV67	—	1"	80	SALES	80
X	1	B	CS	PLUG (R-FNE-55)	—	1"	80	SALES	80

NOTES: (1) ALL BENDS TO BE PRECEDED BY 2SV6-
(2) ALL WELD NUMBERS SHALL BE PRECEDED BY 2SV6-
(3) LAST WELD NO. 31
(4) REF LAYOUT DWG. CN-2441-SN006 / VN-47558
2SV572 HEM CE-2255
(5) REF FLOW DWG. CN-2553-110 (I-7-8,9)
(6) CHECK FOR INSR. INSP. 1200 PSIA
400°F
(7) ALL MECHANICAL JOINTS SHALL BE MADE BY 2SV6-
7/16" THREADED JOINTS SHALL BE PRECEDED BY 2SV6-
(8) WELD # 30 IS A CROSS G WELD.

FOR INFORMATION ONLY

10	ADD B-14 VALVE 2SV6-6	10/11/71	DEC	2SV6-6
9	ADD B-14 VALVE 2SV6-6	10/11/71	DEC	2SV6-6
8	ADD B-14 VALVE 2SV6-6	10/11/71	DEC	2SV6-6
7	ADD B-14 VALVE 2SV6-6	10/11/71	DEC	2SV6-6

Q & CONDITION 1
NUCLEAR SAFETY RELATED



ANSTEC
APERTURE
CARD

1	ADD B-14 VALVE 2SV6-6	10/11/71	DEC	2SV6-6
2	ADD B-14 VALVE 2SV6-6	10/11/71	DEC	2SV6-6
3	ADD B-14 VALVE 2SV6-6	10/11/71	DEC	2SV6-6
4	ADD B-14 VALVE 2SV6-6	10/11/71	DEC	2SV6-6
5	ADD B-14 VALVE 2SV6-6	10/11/71	DEC	2SV6-6
6	ADD B-14 VALVE 2SV6-6	10/11/71	DEC	2SV6-6
7	ADD B-14 VALVE 2SV6-6	10/11/71	DEC	2SV6-6
8	ADD B-14 VALVE 2SV6-6	10/11/71	DEC	2SV6-6
9	ADD B-14 VALVE 2SV6-6	10/11/71	DEC	2SV6-6
10	ADD B-14 VALVE 2SV6-6	10/11/71	DEC	2SV6-6

NUCLEAR SAFETY RELATED - RAI
DUKE POWER COMPANY
CATAMBA NUCLEAR STATION
TITLE: MAIN STEAM VENT TO ATMOSPHERE
STEAM GENERATOR 2C DISCHARGE TO
ROOF DRAIN
SYS. SV LINE NO. 04 DUKE CLASS B
PUMPING SPEC. P.S. 900.2
LOCATION: REA. BLDG./DOGS HOUSE (CDHL)
DWG. NO. CN-254-6 REV. NO. 10

PDR RIDS

9603/50217

