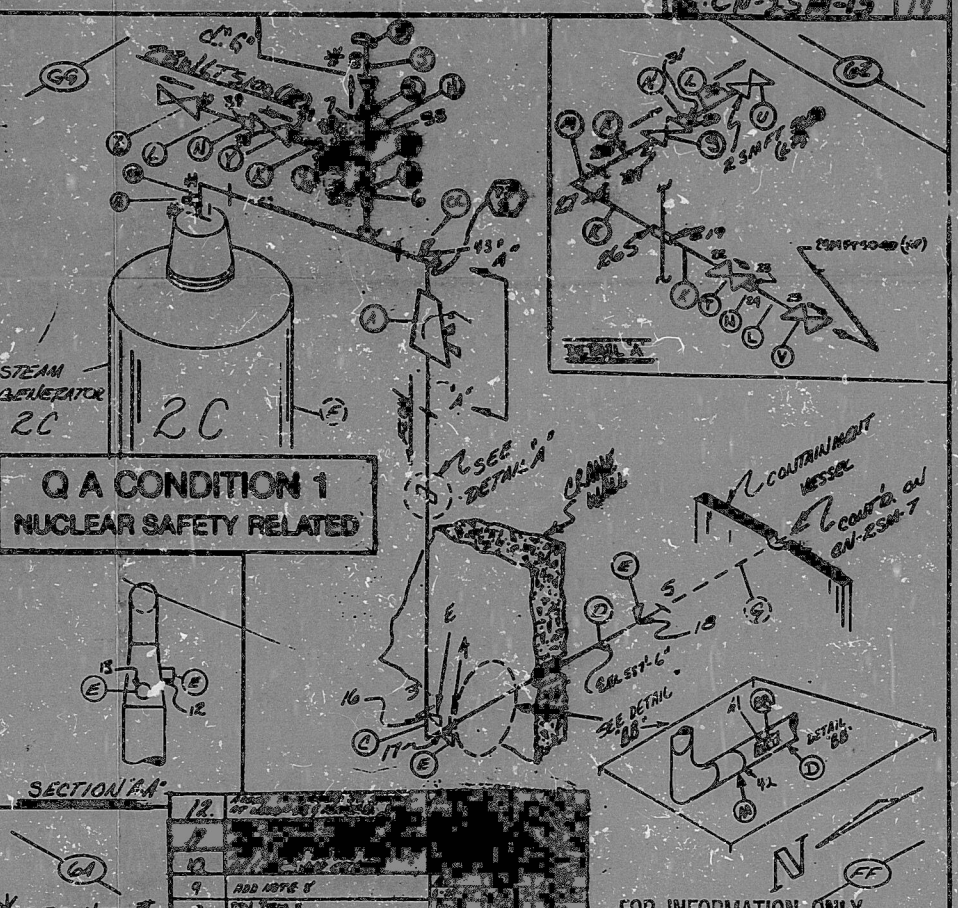


AC  
 VALVE  
 STEAM  
 ASST.

HIGH ENERGY

CN-25M-13 14

BILL OF MATERIAL									
SUP. I.D.	QUANTITY	MATERIAL	DESCRIPTION	SPEC.	DIM.	WGT.	VOL.	MFG. NO.	
								QTY.	NO.
A	1	CS	STEAM GENERATOR						99-178
C	1	CS	PIPE						
D	1	CS	PIPE						
E	5	CS	PIPE						
F	0	CS	PIPE						
G	0	CS	PIPE						
H	3	CS	PIPE						
J	1	SS	NIPPLE						
K	3	CS	PIPE						
L	2	CS	PIPE						
M	1	CS	PIPE						
N	3	CS	PIPE						
P	1	CS	PIPE						
R	1	CS	PIPE						
S	1	CS	PIPE						
T	1	CS	PIPE						
U	1	SS	PIPE						
V	1	SS	PIPE						
W	1	CS	PIPE						
X	1	CS	PIPE						
Y	1	CS	PIPE						
Z	1	SS	PIPE						
AA	2	CS	PIPE						
BB	1	CS	PIPE						
CC	1	CS	PIPE						
DD	1	CS	PIPE						
EE	1	CS	PIPE						



Q A CONDITION 1  
 NUCLEAR SAFETY RELATED

ANSTEC  
 APERTURE  
 CARD

NOTES:  
 1 ALL WELD NUMBERS SHALL BE PRECEDED BY 2 SM/S-  
 2 LAST WELD NO. 47  
 3 REF. LAYOUT DWG. CN-2491-SMO/GEN/20/21/22/23/24/25/26/27/28/29/30/31/32/33/34/35/36/37/38/39/40/41/42/43/44/45/46/47/48/49/50/51/52/53/54/55/56/57/58/59/60/61/62/63/64/65/66/67/68/69/70/71/72/73/74/75/76/77/78/79/80/81/82/83/84/85/86/87/88/89/90/91/92/93/94/95/96/97/98/99/100  
 4 REF. FLOW DNG. CN-2578-10 (A-B) (VIN 39937)  
 5 WELD NO. 15 IS CL. 9  
 6 CHECK FOR INSERVICE INSPECTION: 2000 PSIA @ 600°F  
 7 WELD NOS. 2, 9, 10, 11, 25 IS NOT USED  
 8 WELDS 20, 31, 40 AND VALVES 20W 5100 (V20) & 20W 5100 (V20) ARE LOCATED IN THE DW STAMPING BOUNDARY  
 9 ALL THREADED JOINT AND SHALL BE PRECEDED BY 2000

NO.	REVISION
12	ADD NOTE 8
11	REV. MAT'L E
10	REV. MAT'L E
9	ADD NOTE 8
8	REV. MAT'L E
7	REV. MAT'L E
6	REV. MAT'L E
5	REV. MAT'L E
4	REV. MAT'L E
3	REV. MAT'L E
2	REV. MAT'L E
1	REV. MAT'L E

FOR INFORMATION ONLY  
 Q A CONDITION 1  
 DATE POWER COMPANY  
 CALIFORNIA NUCLEAR STATION  
 TITLE MAIN STEAM SYSTEM  
 STEAM GENERATOR 20, DISCHARGE  
 SHEET NO. 01  
 OF 1500.5  
 REVISION BLDG 7  
 14



PDR RIDS

9403150211

