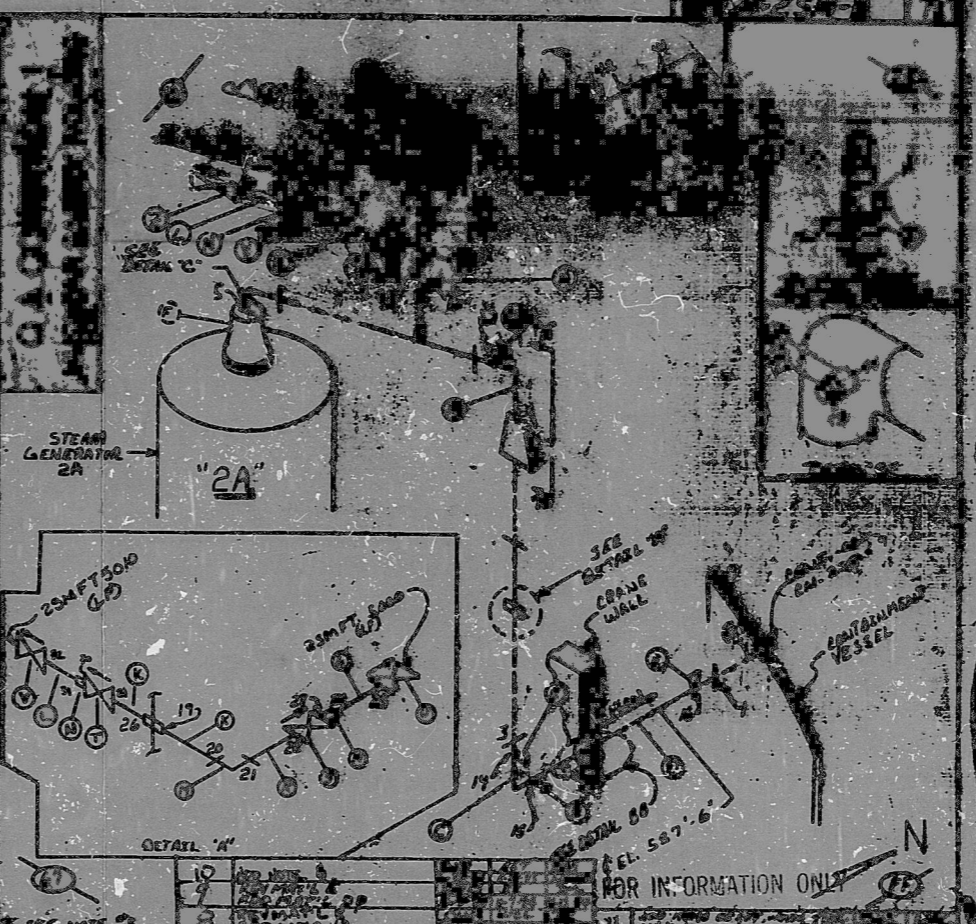


AD
VER-FACT

HIGH ENERGY

BILL OF MATERIALS

ITEM NO.	QUANTITY	DESCRIPTION	UNIT	REQ. NO.	REQ. QTY.	REQ. UNIT	REQ. NO.	REQ. QTY.	REQ. UNIT
A	1	STEAM GENERATOR	EA	1	1	EA	1	1	EA
B	1	STEAM GENERATOR	EA	1	1	EA	1	1	EA
C	1	STEAM GENERATOR	EA	1	1	EA	1	1	EA
D	1	STEAM GENERATOR	EA	1	1	EA	1	1	EA
E	5	SAWS	EA	1	5	EA	1	5	EA
F	2	SAWS	EA	1	2	EA	1	2	EA
G	2	SAWS	EA	1	2	EA	1	2	EA
H	3	SAWS	EA	1	3	EA	1	3	EA
J	1	SAWS	EA	1	1	EA	1	1	EA
K	3	SAWS	EA	1	3	EA	1	3	EA
L	2	SAWS	EA	1	2	EA	1	2	EA
M	2	SAWS	EA	1	2	EA	1	2	EA
N	3	SAWS	EA	1	3	EA	1	3	EA
P	1	SAWS	EA	1	1	EA	1	1	EA
R	1	SAWS	EA	1	1	EA	1	1	EA
S	1	SAWS	EA	1	1	EA	1	1	EA
T	1	SAWS	EA	1	1	EA	1	1	EA
U	1	SAWS	EA	1	1	EA	1	1	EA
V	1	SAWS	EA	1	1	EA	1	1	EA
N	1	SAWS	EA	1	1	EA	1	1	EA
X	1	SAWS	EA	1	1	EA	1	1	EA
Y	1	SAWS	EA	1	1	EA	1	1	EA
Z	1	SAWS	EA	1	1	EA	1	1	EA
AA	0	SAWS	EA	1	0	EA	1	0	EA
BB	1	SAWS	EA	1	1	EA	1	1	EA
CC	1/2	SAWS	EA	1	1/2	EA	1	1/2	EA
DD	1	SAWS	EA	1	1	EA	1	1	EA
EE	1	SAWS	EA	1	1	EA	1	1	EA
FF	1	SAWS	EA	1	1	EA	1	1	EA



ANSTEC
APERTURE
CARD

NOTES:

- ALL WELD NUMBERS SHALL BE PRECEDED BY 25M 11-
- LAST WELD NO. 25M 11-10
- REF. LAYOUT DWG. CN-2491-SM009 VN# 40339 AS MOUNTED
25M 500 = 25M 501, 25M 502 (VN# 39823)
- REF. FLOW DWG. CN-2593-110 (2-3) (VN# 38997)
- WELD # 25 PL. 6
- CHECK FOR INSPECTION INSPECTION: 1000 PSEA & 600P
- WELD NOS. 4, 7, 10, 13, 17 & 10 NOT USED.
- WELDS 4033135 AND VN# 3815000 (WELD 25M 500 (VIB)) ARE LOCATED IN THE ENCL. STAMPING BOUNDARY.

10	REV. 11-11-68
9	REV. 11-11-68
8	REV. 11-11-68
7	REV. 11-11-68
6	REV. 11-11-68
5	REV. 11-11-68
4	REV. 11-11-68
3	REV. 11-11-68
2	REV. 11-11-68
1	REV. 11-11-68

DATE POWER COMPANY
CHASCO NUCLEAR STATION

MAIN STEAM SYSTEM
STEAM GENERATOR 2A DISCH.

37M-1000-01

CS 1968.5

PDR RIDS

9603150117

