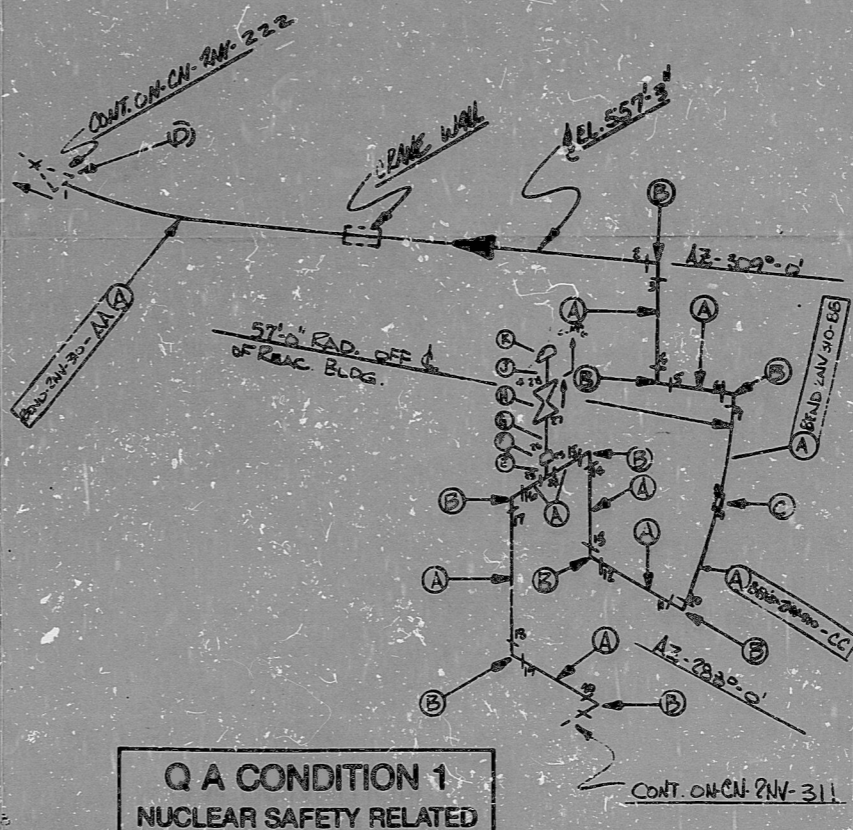


DATE
 VERIFIED
 BY
 2/11/75

13705 **CN-2NV-310** 5

BILL OF MATERIAL									
Q.A. NO.	REV.	CLASS	ITEM	QUANTITY	DESCRIPTION	UNIT	SIZE	WGT.	LOT NO.
A	01	B	SS	1	PIPE	SMWS	2"	1600	
B	01	B	SS	2	ELBOW (SW)	FOR	2"	6000	
C	01	B	SS	2	FLANGE (SW)	FOR	2"	6000	
D	01	A	SS	1	TEE (SW)	FOR	2"	6000	
E	01	B	SS	1	TEE	FOR	2"	6000	
F	01	B	SS	1	TEE (GWS)	FOR	2"	6000	
G	01	B	SS	1	TEE	FOR	2"	6000	
H	01	B	SS	1	TEE	FOR	2"	6000	
I	01	B	SS	1	TEE	FOR	2"	6000	
J	01	B	SS	1	TEE	FOR	2"	6000	
K	01	B	SS	1	TEE	FOR	2"	6000	
L	01	B	SS	1	TEE	FOR	2"	6000	
M	01	B	SS	1	TEE	FOR	2"	6000	
N	01	B	SS	1	TEE	FOR	2"	6000	
O	01	B	SS	1	TEE	FOR	2"	6000	
P	01	B	SS	1	TEE	FOR	2"	6000	
Q	01	B	SS	1	TEE	FOR	2"	6000	
R	01	B	SS	1	TEE	FOR	2"	6000	
S	01	B	SS	1	TEE	FOR	2"	6000	
T	01	B	SS	1	TEE	FOR	2"	6000	
U	01	B	SS	1	TEE	FOR	2"	6000	
V	01	B	SS	1	TEE	FOR	2"	6000	
W	01	B	SS	1	TEE	FOR	2"	6000	
X	01	B	SS	1	TEE	FOR	2"	6000	
Y	01	B	SS	1	TEE	FOR	2"	6000	
Z	01	B	SS	1	TEE	FOR	2"	6000	



Q A CONDITION 1
NUCLEAR SAFETY RELATED

- NOTES:
- ALL WELD NUMBERS SHALL BE PRECEDED BY 2NV310-
 - LAST WELD NO. 28
 - REF. LAYOUT DWG. CN-291-NV031
 - REF. FLOW DWG. CN-2554-1.5 (D-2)
 - CHECK FOR INSPECTION INSPECTION 7500 PSIA & 750°F
 - FOR FABRICATION OF BENDS & EXTRA WAS ALLOCATED.
 - WELD TO CLASS G

FOR INFORMATION ONLY

NO.	REVISION	DATE	BY	CHKD	APP'D
1	REINHOLD F.M. A				
2	ADD CONT.				
3	ADD WELDS				
4	ADD WELDS				
5	ADD WELDS				

Q A CONDITION I	
DUKE POWER COMPANY CATAWBA NUCLEAR STATION	
TITLE: CHEMICAL AND VOLUME CONTROL SYSTEM TO REACTOR COOLANT PUMP 2B	
SYST. NV	LINE NO. 04 - DUC CLASS B
PERM SPEC.	PS. 2501.2
LOCATION	REA. BLDG. (RTU)
DWG. NO.	CN-2NV-310
REV. NO.	5

ANSTEC
 APERTURE
 CARD

PDR RIDS

9603150112

