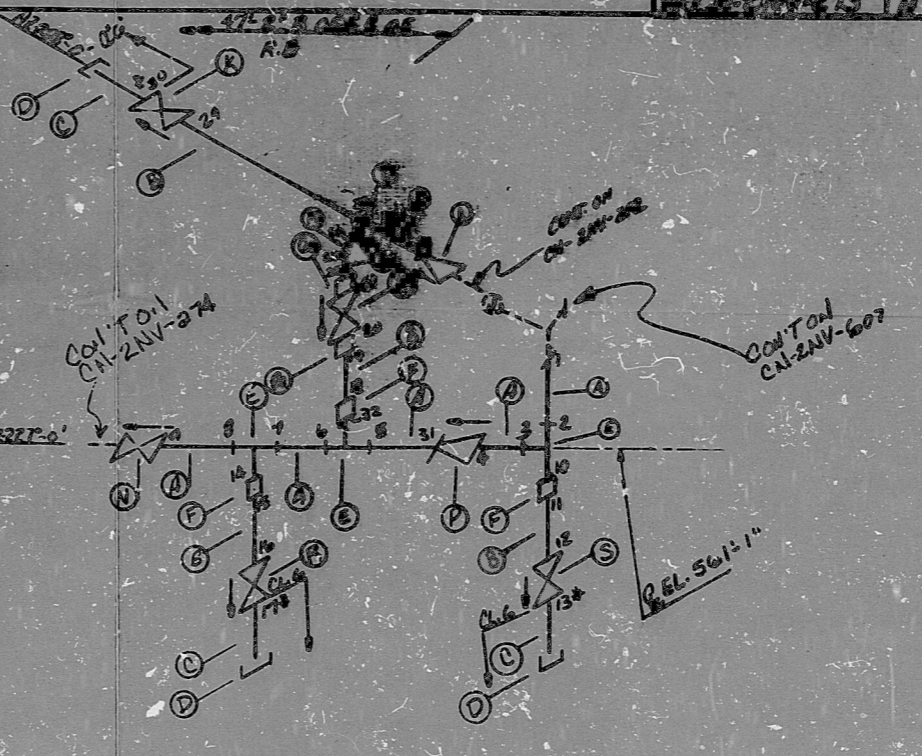


AO
V.M. 1.0
SYS 2ANV25, 22
2ANV25

AO
VERIFIED
SYS 2ANV25
2ANV25, 2ANV25

HIGH ENERGY

LINE NO.	DESCRIPTION	UNIT	SIZE	DES.	REV.	DATE
1	SW	SW	2"	10		
2	SW	SW	3/4"	10		
3	SW	SW	3/4"	10		
4	SW	SW	3/4"	10		
5	SW	SW	3/4"	10		
6	SW	SW	3/4"	10		
7	SW	SW	3/4"	10		
8	SW	SW	3/4"	10		
9	SW	SW	3/4"	10		
10	SW	SW	3/4"	10		
11	SW	SW	3/4"	10		
12	SW	SW	3/4"	10		
13	SW	SW	3/4"	10		
14	SW	SW	3/4"	10		
15	SW	SW	3/4"	10		
16	SW	SW	3/4"	10		
17	SW	SW	3/4"	10		
18	SW	SW	3/4"	10		
19	SW	SW	3/4"	10		
20	SW	SW	3/4"	10		
21	SW	SW	3/4"	10		
22	SW	SW	3/4"	10		
23	SW	SW	3/4"	10		
24	SW	SW	3/4"	10		
25	SW	SW	3/4"	10		
26	SW	SW	3/4"	10		
27	SW	SW	3/4"	10		
28	SW	SW	3/4"	10		
29	SW	SW	3/4"	10		
30	SW	SW	3/4"	10		
31	SW	SW	3/4"	10		
32	SW	SW	3/4"	10		
33	SW	SW	3/4"	10		
34	SW	SW	3/4"	10		
35	SW	SW	3/4"	10		
36	SW	SW	3/4"	10		
37	SW	SW	3/4"	10		
38	SW	SW	3/4"	10		
39	SW	SW	3/4"	10		
40	SW	SW	3/4"	10		
41	SW	SW	3/4"	10		
42	SW	SW	3/4"	10		
43	SW	SW	3/4"	10		
44	SW	SW	3/4"	10		
45	SW	SW	3/4"	10		
46	SW	SW	3/4"	10		
47	SW	SW	3/4"	10		
48	SW	SW	3/4"	10		
49	SW	SW	3/4"	10		
50	SW	SW	3/4"	10		



NOTES:
 1 ALL WELD NUMBERS SHALL BE DESCRIBED BY 2ANV25-
 2 LAST WELD NO. 32
 3 REF. LAYOUT DIAG. CN-2491-NV036
 4 REF. FLOW DIAG. CN-2654-1, 2, 3 (G-13, E, G, 3, 4)
 5 CHECK FOR FAILURE IN SPECIAL (250°F) 17500
 6 WELDS 307 AND 10 B ARE CLASS 'G'

SEE NOTE #6

7	ALL WELD ITEM 'A'
6	REL. 501-11
5	REL. 501-11
4	REL. 501-11
3	REL. 501-11
2	REL. 501-11
1	REL. 501-11
0	REL. 501-11

Q A CONDITION 1
 NUCLEAR SAFETY RELATED

Q A CONDITION I
 DUNE POWER COMPANY
 CAROLINA NUCLEAR STATION
 CHEM. AND VOL. CONTROL SYSTEM
 TO REAC. COOLANT PUMP 20
 SYS. NV- LINE NO. 20 DUNE CLASS B
 PERIOD SPEC. P.S. 2501.2
 LOCATION REACTOR BLDG. RTA-
 DUNE NO. CAL-2ANV-275 DUNE NO. 100

ANSTEC
 APERTURE
 CARD

PDR RIDS

9003150111

