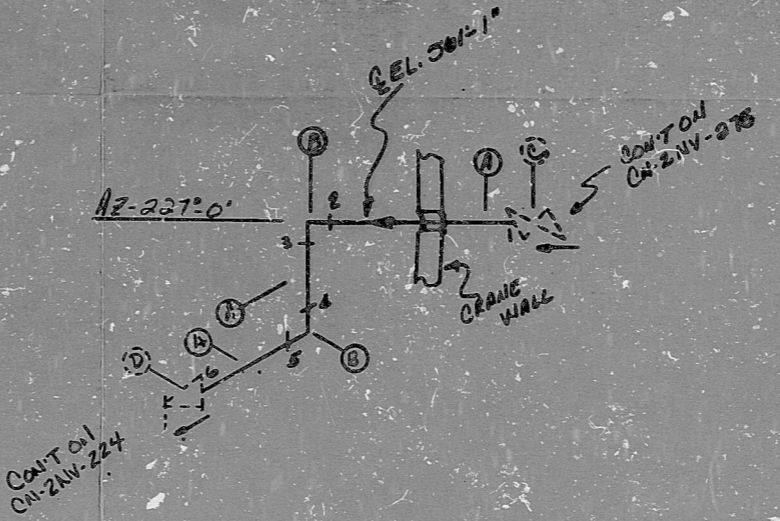


AO
 VERIFIED
 BY: [Signature]
 DATE: [Date]

HIGH ENERGY

LINE	SYMBOL	DESCRIPTION	QTY	UNIT	REV	DATE	BY	CHKD
1	○	PIPE	1	LN				
2	○	PIPE	1	LN				
3	○	PIPE	1	LN				
4	○	PIPE	1	LN				
5	○	PIPE	1	LN				
6	○	PIPE	1	LN				
7	○	PIPE	1	LN				
8	○	PIPE	1	LN				
9	○	PIPE	1	LN				
10	○	PIPE	1	LN				
11	○	PIPE	1	LN				
12	○	PIPE	1	LN				
13	○	PIPE	1	LN				
14	○	PIPE	1	LN				
15	○	PIPE	1	LN				
16	○	PIPE	1	LN				
17	○	PIPE	1	LN				
18	○	PIPE	1	LN				
19	○	PIPE	1	LN				
20	○	PIPE	1	LN				
21	○	PIPE	1	LN				
22	○	PIPE	1	LN				
23	○	PIPE	1	LN				
24	○	PIPE	1	LN				
25	○	PIPE	1	LN				
26	○	PIPE	1	LN				
27	○	PIPE	1	LN				
28	○	PIPE	1	LN				
29	○	PIPE	1	LN				
30	○	PIPE	1	LN				
31	○	PIPE	1	LN				
32	○	PIPE	1	LN				
33	○	PIPE	1	LN				
34	○	PIPE	1	LN				
35	○	PIPE	1	LN				
36	○	PIPE	1	LN				
37	○	PIPE	1	LN				
38	○	PIPE	1	LN				
39	○	PIPE	1	LN				
40	○	PIPE	1	LN				
41	○	PIPE	1	LN				
42	○	PIPE	1	LN				
43	○	PIPE	1	LN				
44	○	PIPE	1	LN				
45	○	PIPE	1	LN				
46	○	PIPE	1	LN				
47	○	PIPE	1	LN				
48	○	PIPE	1	LN				
49	○	PIPE	1	LN				
50	○	PIPE	1	LN				



NOTES:
 1. ALL WELD NUMBERS SHALL BE PRESCRIBED BY 2AV274-
 2. LAST WELD NO. 2
 3. REF. LAYOUT DIAG. CN-2491-NV-236
 4. REF. FLOW DIAG. CN-2564-1.8/1.5 (G-13/F-4-S-6)
 5. CHECK FOR INSERVICE INSPECTION 125°F/1250 RPM

FOR INFORMATION ONLY

NO.	REVISION	DATE	BY	CHKD
1	REV. CORR.			
2	REL. FOR CONST.			

**Q A CONDITION 1
 NUCLEAR SAFETY RELATED**

Q A CONDITION	1
DUKE POWER COMPANY	
CARRERA NUCLEAR SERVICE	
TITLE	CHEM. & VOL. CONTROL SYSTEM TO REACTOR COOLANT PUMP 2C
SYST. NV	LINE NO. 04 - DUCS CLASS B
FIGURE SPEC.	PS 2501.2
LOCATION	REACTOR BLDG. RTU
DRAWING NO.	2AV-274
REV. NO.	1

ANSTEC
 APERTURE
 CARD

PDR RIDS

9603150109

