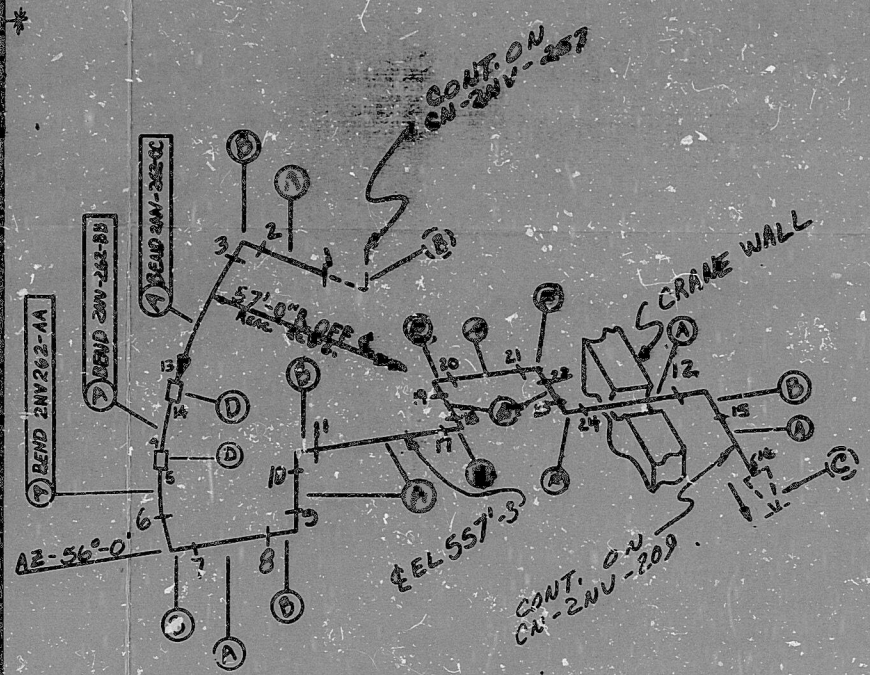


AO
VERIFIED
SYS. 10/20/60
ZAVINE, JETS

HIGH ENERGY

701-24V-262

LINE	DESCRIPTION	QTY	UNIT	DATE
A	2" SW. FIB.	2	PIPS	
B	2" SW. FIB.	2	PIPS	
C	2" SW. FIB.	2	PIPS	
D	2" SW. FIB.	2	PIPS	
E	2" SW. FIB.	2	PIPS	
F	2" SW. FIB.	2	PIPS	



ANSTEEL
APERTURE
CARD

NOTES:
 1 ALL WELD REPAIRS SHALL BE PERFORMED BY 24V 262--
 2 LAST WELD DSG. 24
 3 REA. LAYOUT DSG. CN-2491-NV041
 4 REA. FLOW DSG. CN-2554-1,5,11-6
 5 CHECK FOR INSERVICE INSPECTION 2500PSIA @ 250°F
 6 W. OF PIPE WAS USED FOR FABRICATION AE BEADS

FOR INFORMATION ONLY

* SEE NOTE #6

NO.	REVISION
6	ADD CONT.
5	REN. HOLD ITRM "E"
4	REN. HOLD ITRM "F"
3	
2	
1	
0	REL. FOR CONVE.

Q A CONDITION 1
NUCLEAR SAFETY RELATED

Q A CONDITION 1
USE POWER COMPANY CARRIWA NUCLEAR STATION
TITLE CHEMICAL AND VOLUME CONTROL SYSTEM TO REACTOR COOLANT PUMP 2A
SYN. INV. LINE NO. 04 - CLASS B
PRINTING SPEC. P.S. 2501.9
LOCATION: REACTOR BUILDING (RTW)
DESIGN NO. CN-24V-262

PDR RIDS

9603150105

