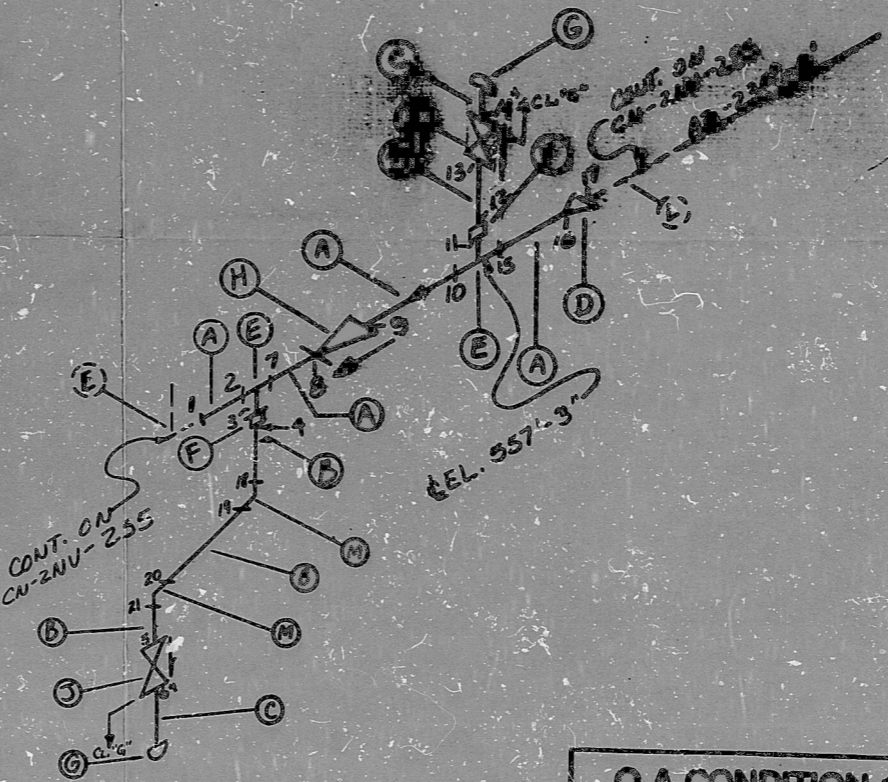


HIGH ENERGY

AO  
VERIFIED  
SPEC. 2-NV-258  
2ND REV. 11/73

BILL OF MATERIALS					
NO.	QTY	DESCRIPTION	UNIT	SIZE	USE
A	1	PIPE	SEALS	2"	140
B	1	PIPE	SEALS	1 1/2"	140
C	2	PIPE	SEALS	1 1/2"	140
D	1	PIPE	SEALS	1 1/2"	140
E	2	PIPE	SEALS	2"	140
F	2	PIPE	SEALS	2"	140
G	2	PIPE	SEALS	2"	140
H	1	PIPE	SEALS	2"	140
I	1	PIPE	SEALS	2"	140
J	1	PIPE	SEALS	2"	140
K	1	PIPE	SEALS	2"	140
L	1	PIPE	SEALS	2"	140
M	2	PIPE	SEALS	2"	140



NOTES:  
 1 ALL WELD NUMBERS SHALL BE PRECEDED BY 2NV 258-  
 2 EAST WELD NO. 2  
 3 REV. LAYOUT DWG. CN-2491-NV037  
 4 REF. FLOW DWG. CN-2559-(1,5)-(1-4,5)  
 5 CHECK FOR INSERVICE INSPECTION 2750PSIA 1250°F  
 6 DRAINAGE WEIGHT 2+14 FROM CL. B TO CL. G"

FOR INFORMATION ONLY

- \* SEE NOTE 6
- 7 REPAIR CLASS A
- 6 REPAIR CLASS B
- 5 REPAIR CLASS C
- 4 REPAIR CLASS D
- 3 Add Hold Item A
- 2 Add Hold Item B
- 1 Add Hold Item C
- 0 REL. FOR CONST.

Q A CONDITION 1  
 NUCLEAR SAFETY RELATED

Q A CONDITION I  
 EAST POWER COMPANY  
 CALIFORNIA NUCLEAR SECTION

PHYSICAL AND VOLUME  
 CONTROL SYSTEM REACTOR ✓  
 COOLANT PUMP 2A SUPPLY ✓  
 SYS. INV. USE NO. 29 ✓ DUNE CLASS B  
 DRAWING SPEC. RS. 2501.2 ✓  
 LOCATION REACTOR BUILDING (RTA) ✓  
 DUNE NO. CN-2NV-258 REV. NO.

ANSTEC  
 APERTURE  
 CARD



PDR RIDS

9603150102

