

AO
VERIFIED
SYS 2NV25
2NV13

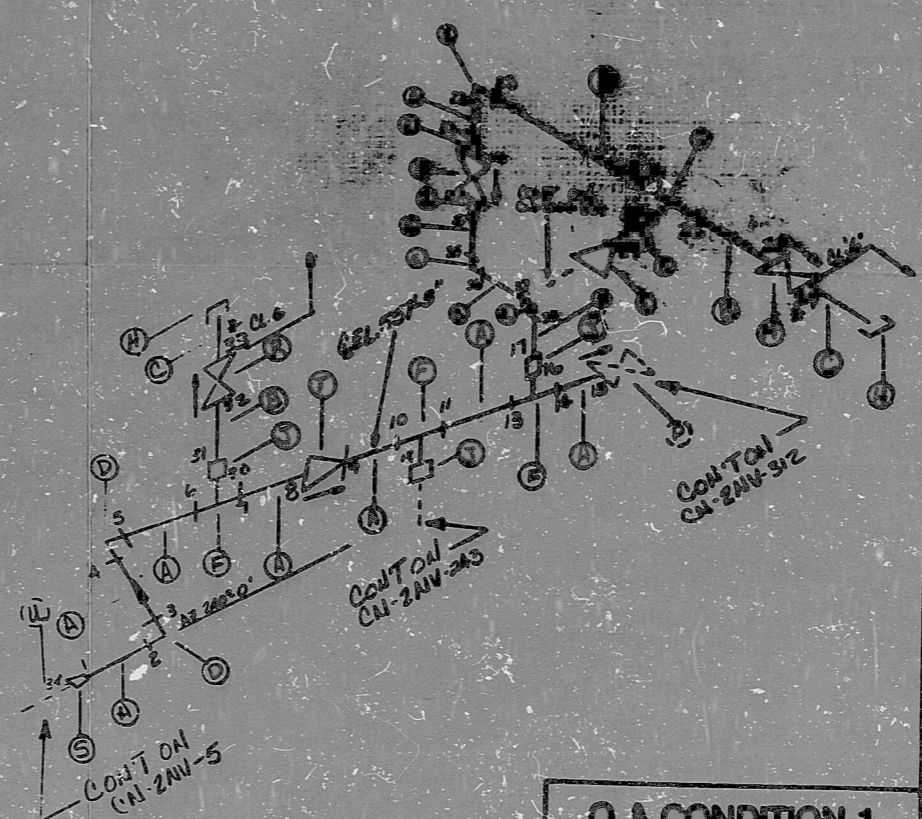
AO
VERIFIED
SYS 2NV25
2NV13, 2NV14

HIGH ENERGY

CN-2NV-242

BILL OF MATERIAL

QTY	UNIT	DESCRIPTION	COMP.	SIZE	LEN.	WT.
A	4	PIPE	SMLS	2"	160	
B	1	PIPE	SMLS	3/4"	160	
C	8	PIPE (1/2")	SMLS	3/4"	160	
D	2	90° ELB SW	FOR	2"		
E	3	90° ELB SW	FOR	3/4"		
F	3	TEE SW	FOR	2"		
G	1	TEE SW	FOR	3/4"		
H	2	SCRD	FOR	3/4"		
J	3	RED TIE SW	FOR	1/2"		
K	2	RED TIE SW	FOR	1/2"		
L	1	2NV200(G) SW				
M	1	2NV200(G) SW				
N	1	2NV200(G) SW				
P	0	2NV200(G) SW				
R	1	2NV200(G) SW				
S	1	RED COIL SW	SMLS	4"x2"	160	
T	1	2NV200(G) SW				
U	0	PENT				



ANSTEC
APERTURE
CARD

- NOTES:
- ALL WELD NUMBERS SHALL BE PRECEDED BY 2NV242-
 - LAST WELD NO. - 36
 - REF. LAYOUT DWG. CN-2491-NV033 (VN*29251)
 - REF. FLOW DWG. CN-2554-15 (D.E. 4.3.11)
 - CHECK FOR INSPECTION INSTRUCTION 250°F @ 150 PSIA
 - WELDS 39 AND 33 ARE CLASS 1/2

FOR INFORMATION ONLY

8 ADD CONT.

* SEE NOTE 6

NO.	REVISION
7	REV. PART. U
6	REVISE ITEM 11 ADD CONT.
5	REVISE ITEM 5 FOR ADD. WELDS TO SW. SW. SW.
4	Rev. Hold Item N
3	Rev. Hold Item D
2	ADD HOLD ITEM "K"
1	ADD WELD 39
D	REL. FOR COIL

Q A CONDITION 1
NUCLEAR SAFETY RELATED

Q A CONDITION	✓
DUNE POWER COMPANY CANDIDA NUCLEAR STATION	
CHEM. AND VOL. CONTROL SYS. TO REAC. COOLANT PUMP SD	✓
SY. NY - LINE NO. 24 - (SEE CLASS B)	
FORM SPEC. P.S. 2301.2	
LOCATION REACTOR BLDG. RTM	
DWG. NO. CN-2NV-242	REV. NO. 8

PDR RIDS

01603152099

